



Hardwick Green, W13

£499,950

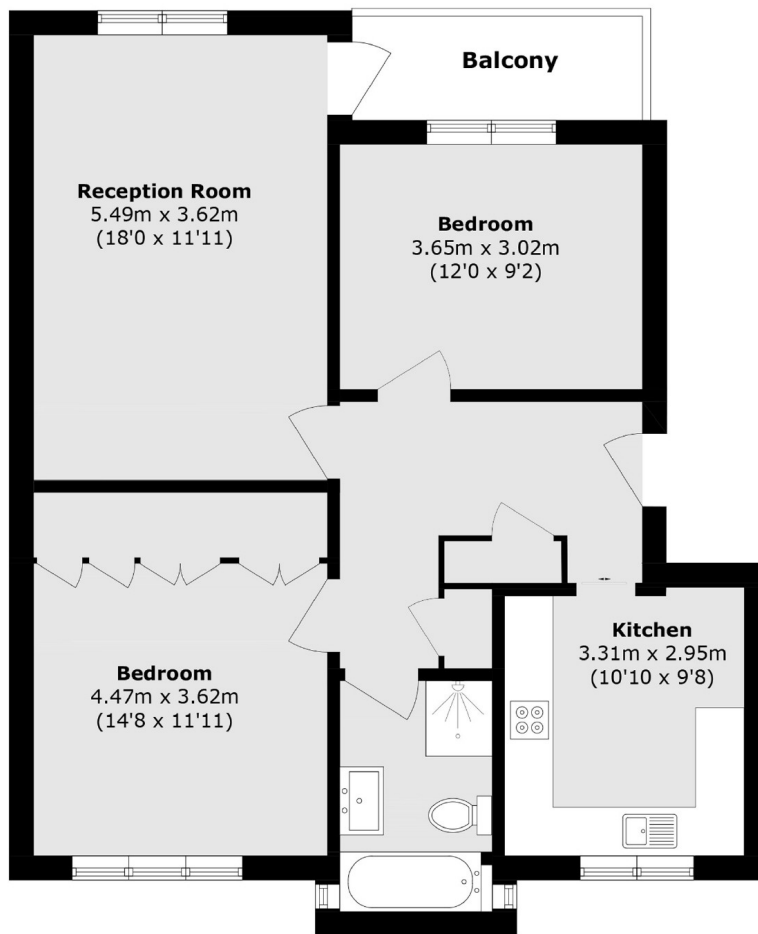
This ground floor two bedroom purpose built apartment is presented in fantastic condition throughout with a large living room, separate kitchen, two double bedrooms, modern bathroom, balcony and a garage within an adjacent block.

Located close to Pitshanger and Cleveland Parks with excellent local school, private and state. The award winning Pitshanger Lane high street is a short walk and for the commuter there is easy access to West Ealing and Ealing Broadway Elizabeth line stations.

Features

- Two Double Bedrooms
- Ground Floor
- No Onward Chain
- Garage
- Share Of Freehold
- Balcony

Hardwick Green, London, W13



Total area (approx.): 76.3 sq. m (821.2 sq. ft)

Balcony area (approx.): 4.5 sq. m (48.4 sq. ft)

Dexters

Ealing
2 New Ealing Broadway
London
W5 2NU
Sales
020 8810 0909

Energy Rating: C. We aim to make our particulars both accurate and reliable. However they are not guaranteed; nor do they form part of an offer or contract. If you require clarification on any points then please contact us, especially if you're traveling some distance to view. Please note that appliances and heating systems have not been tested and therefore no warranties can be given as to their good working order.

 **RICS** | Regulated
Estate Agent
and Letting Agent

[dexters.co.uk](https://www.dexters.co.uk)