



Birkbeck Hill, SE21 | £999,950

02087028111

dulwichvillage@pedderproperty.com

pedder
We live local



In General

- An attractive three-bedroom Victorian house
- Refurbished to an extremely high standard
- Three bedrooms
- Double reception room
- Newly fitted kitchen open-plan to a breakfast room
- Family bathroom
- Downstairs cloakroom
- Delightful 80' landscaped garden
- Beautifully presented throughout
- Popular location close to schools and transport links

In Detail

An attractive three-bedroom Victorian house for sale located on this highly sought-after residential road in Dulwich.

The property has been refurbished to an exceptional standard throughout creating a beautifully presented family home. The accommodation is arranged over two floors and comprises three bedrooms, newly installed kitchen and bathroom, double reception room, breakfast room open-plan from the kitchen and downstairs WC. Externally to the rear there is a most delightful, landscaped garden measuring 80'. To the rear of the garden is a timber outhouse which could be used as an office.

Both Dulwich Village and Herne Hill are close-by with their range of charming independent shops, cafes and restaurants. Nearby Dulwich Park, Belair Park and Brockwell Park offer beautiful green spaces. The property is also well-positioned for top rated state and independent schools, including Rosendale Road Primary School, Dulwich College, James Allen's Girls School and Alleyn's School. There are excellent rail connections to central London from nearby West Dulwich (Victoria/Blackfriars), Herne Hill (Victoria, Blackfriars, City Thameslink, Kings Cross/St Pancras) and Tulse Hill (London Bridge, Thameslink).

Internal viewing of this exceptional house is advised. Offered with no onward chain.

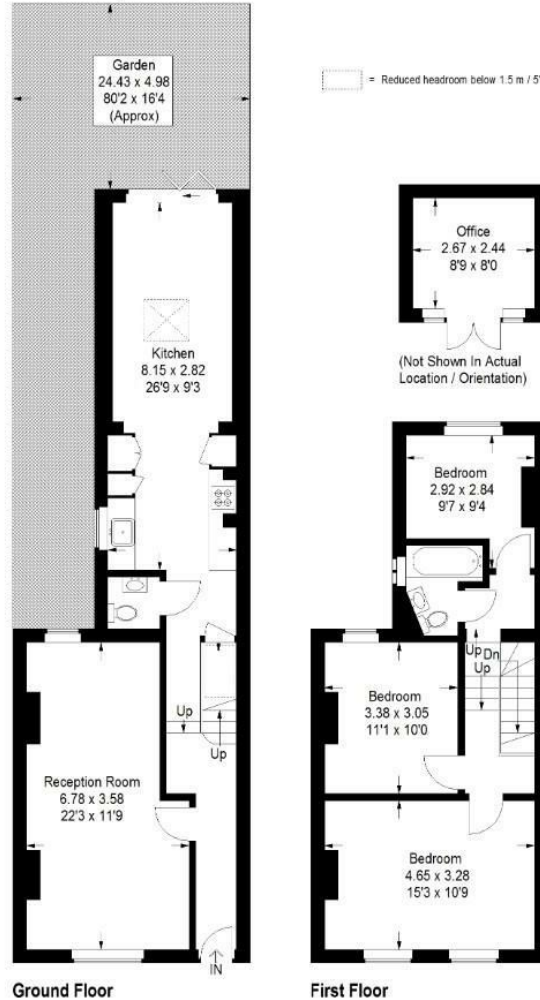
EPC: D | Council Tax Band: E



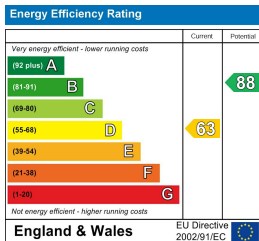
Floorplan

Birkbeck Hill, SE21

Approximate Gross Internal Area
 103.7 sq m / 1116 sq ft
 Office = 6.9 sq m / 74 sq ft
 Total = 110.6 sq m / 1190 sq ft



Copyright www.pedderproperty.com © 2026
 These plans are for representation purposes only as defined by RICS - Code of Measuring Practice.
 Not drawn to Scale. Windows and door openings are approximate. Please check all dimensions, shapes and compass bearings before making any decisions reliant upon them.



Pedder Property Ltd trading as Pedder for themselves and for the vendor/landlord of this property whose agents they are, give notice that (1) these particulars do not constitute any part of an offer or contract, (2) all statements contained within these particulars are made without responsibility on the part of Pedder or the vendor/landlord, (3) whilst made in good faith, none of the statements contained within these particulars are to be relied upon as a statement of representation or fact, (4) any intending purchaser/tenant must satisfy him/herself by inspection or otherwise as to the correctness of each of the statements contained within these particulars, (5) the vendor/landlord does not make or give either Pedder or any person in their employment any authority to make or give representation or warranty whatsoever in relation to this property.