



Malpas Road, SE4

£1,000,000

This extended four double bedroom Victorian house offers over 1450 Sq ft of living space, and boasts period and modern features throughout. To the rear is a private garden with its own rear access.

Features

- Victorian Terraced Home
- Four Double Bedrooms
- Over Three Floors
- Rear access
- Two Bathrooms
- Close To Brockley Village

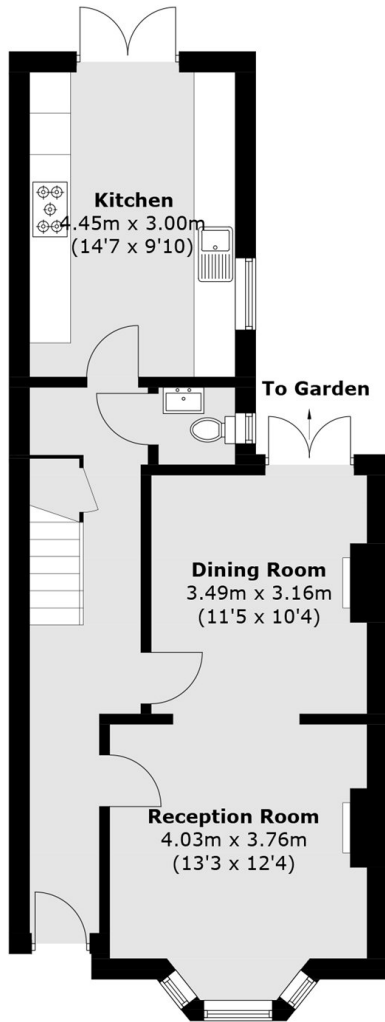


Malpas Road, SE4

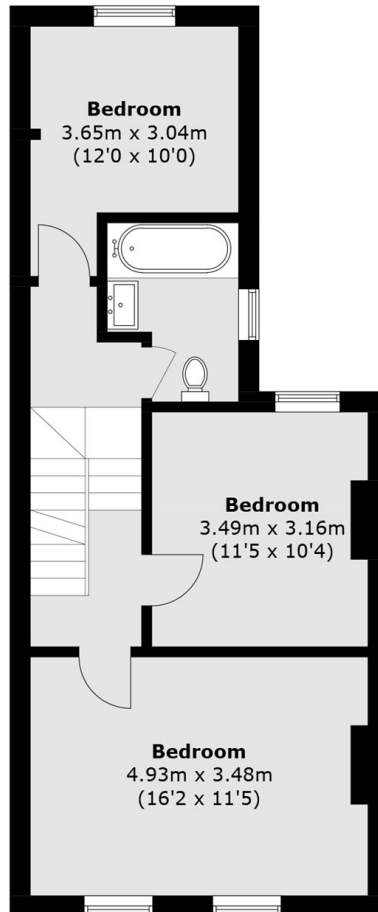
Malpas Road is ideally located to all amenities including outstanding schools such as Myatt Garden Primary School & Haberdashers' Aske's Hatcham College. The property is close to parkland and excellent transport facilities within access of several stations including New Cross, St Johns and Brockley.



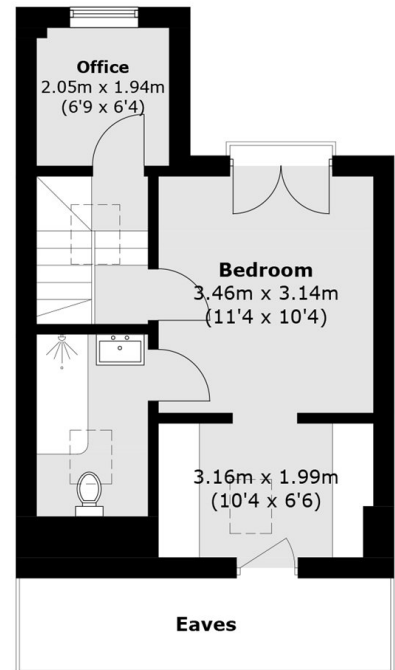
Malpas Road, London, SE4



Ground Floor



First Floor



Second Floor

Total area (approx.): 136.3 sq. m (1,467.1 sq. ft)
(Excluding Eaves)