

Sanders & Sanders

ESTATE AGENTS

CROMPTON AVENUE BIDFORD-ON-AVON ALCESTER



Situated within a no-through road, this three-bedroom end-of-terrace home occupies a larger than average plot and offers excellent scope for modernisation, extension, and further improvement (subject to the necessary planning permissions). The well-proportioned accommodation includes a spacious lounge, kitchen/breakfast room, sunroom with adjoining workshop and useful stores, together with three bedrooms and a family bathroom. Outside, the property benefits from a generous rear garden and driveway providing ample off-road parking. Offering buyers the opportunity to create a home tailored to their own tastes and requirements, this is a rare chance to acquire a property with genuine potential in a popular village location. EPC- D.

Offers over £295,000

Burton House, High Street, Alcester, Warwickshire, B49 5AB.
Tel: 01789 766771 E-mail: alcester@sanders-sanders.co.uk

Web: www.sanders-sanders.co.uk

19 Crompton Avenue, Bidford-on-Avon, Alcester, Warwickshire, B50 4DG

Lounge



Sunroom with Outhouses



Kitchen/Breakfast Room





Bedrooms



Bathroom



Generously Sized Rear Garden





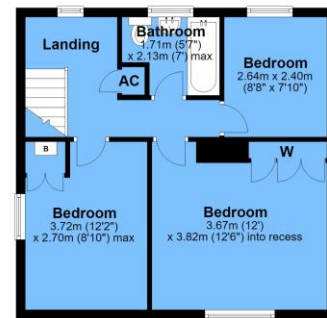
Ground Floor

Approx. 70.2 sq. metres (756.1 sq. feet)



First Floor

Approx. 46.2 sq. metres (497.2 sq. feet)



Fixtures & Fittings

Please note that the fixtures & fittings shown on the photographs, contained within these property details, do not form part of a fixtures & fittings list. Some items may/may not be included. You are advised to clarify what items are included before entering into any negotiations.

Money Laundering Regulations – Identification Checks

In line The Money Laundering Regulations 2007, we are duty bound to carry out due diligence on all of our clients to confirm their identity. In line with legal requirements, all purchasers who have an offer accepted on a property marketed by Sanders&Sanders must complete an identification check. To carry out these checks, we work with a specialist third-party provider and a fee of £25 + VAT per purchaser is payable in advance once an offer has been agreed and before we can issue a Memorandum of Sale.

Floor Plans & Property Details Disclaimer

These floor plans are for identification purposes only in relation to where one room is situated to another. They are not to be relied upon in any way for dimensions, scaling, or sq. ft/metres. We will not be held responsible for any loss incurred, due to reliance on these measurements from the floor plans or measurements from the property details. You are advised to confirm all measurements.