



Henley Street, Stratford-Upon-Avon, CV37 6QW

**SHELDON
BOSLEY
KNIGHT**

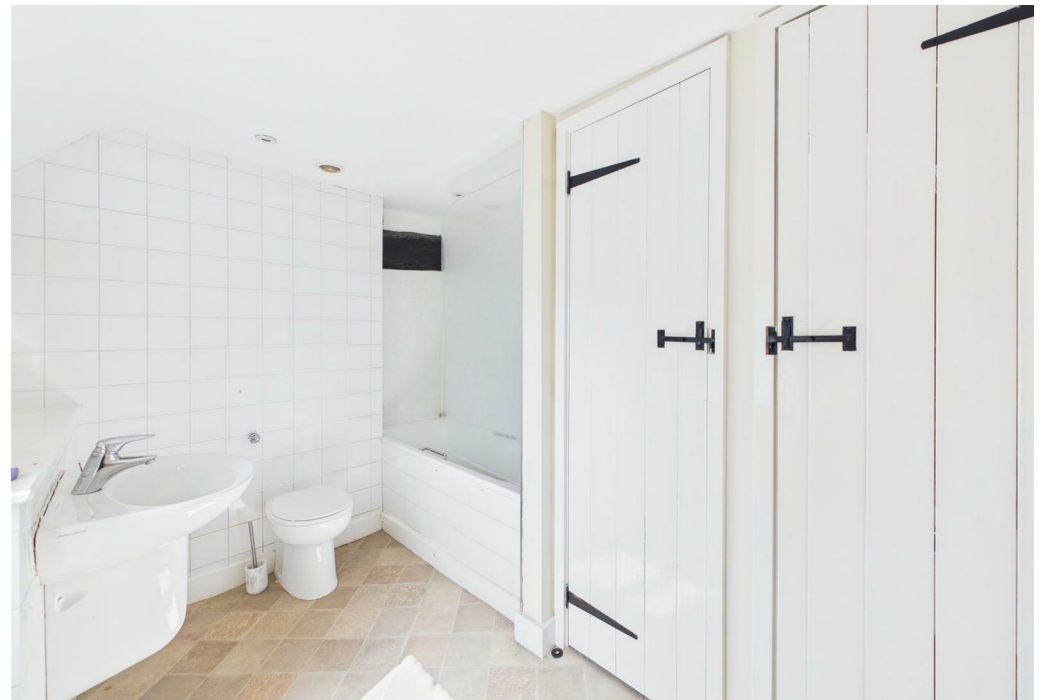
LAND AND
PROPERTY
PROFESSIONALS

Property Description

*** DEPOSIT ALTERNATIVE AVAILABLE

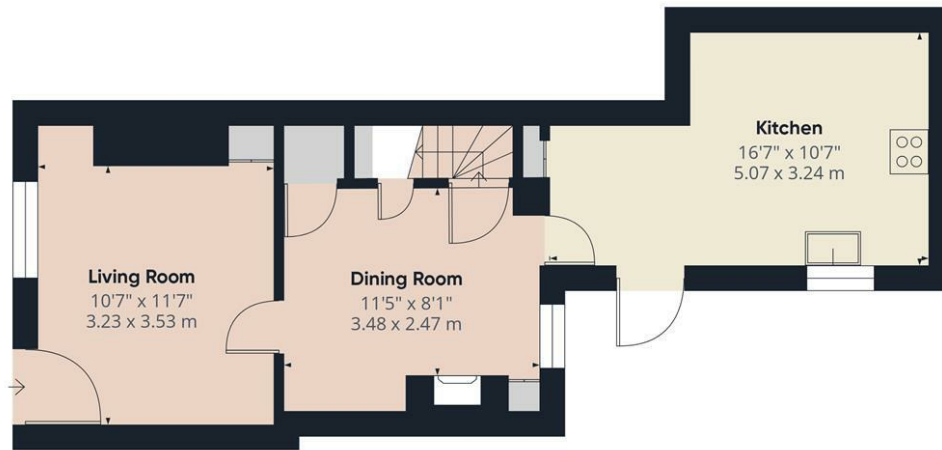
*** A one bedroom, terraced House situated in the heart of the Town Centre of Stratford-upon-Avon. This home is located on the pedestrianised Henley Street, overlooking Shakespeare's birthplace. To the front of the property is the Living Room which leads through to the dining room with under stairs storage. Spacious Kitchen with room for a dining table with an oven, gas hob and plumbing for a washing machine. On the first floor is one double bedroom with built in wardrobes and a bathroom with a shower over the bath, WC & sink. Externally to the rear there is a small courtyard. The property is offered unfurnished. Parking would be on street with parking permits available via the local council. Council Tax Band C. Energy Rating D. Available Now!



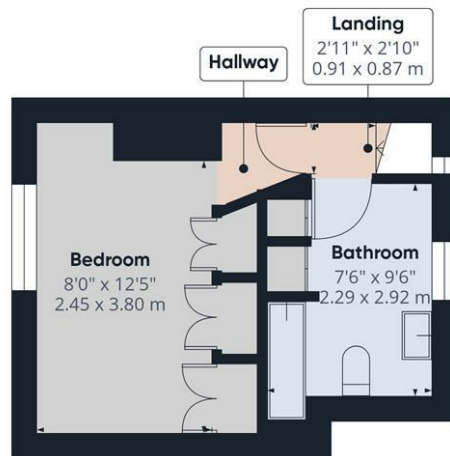


Key Features

- *** DEPOSIT ALTERNATIVE AVAILABLE ***
- Stratford-upon-Avon
- 1 Bedroom
- Terraced House
- Unfurnished
- Courtyard Garden
- Town Centre Location
- Council Tax Band C
- Energy Rating D
- Full of character & charm



Ground Floor



Floor 1

Approximate total area⁽¹⁾
629 ft²
58.7 m²

(1) Excluding balconies and terraces

Calculations reference the RICS IPMS 3C standard. Measurements are approximate and not to scale. This floor plan is intended for illustration only.

GIRAFFE360



£925 PCM