



Grantham Road, Sleaford NG34 7NX

welcome to

Grantham Road, Sleaford

Stylishly presented semi-detached home in a popular location on the outskirts of Sleaford. Arranged over three storeys with spacious lounge, modern kitchen, office space and shower room. Driveway parking and enclosed garden with brick outbuilding to the rear.



Entrance Hall

Having tiled flooring, radiator, window to the rear and stairs rising to the first floor.

Reception Two

Having a TV point, radiator, LVT flooring and window to the front.

Lounge

Featuring an open fire, LVT flooring, radiator, TV point, understairs cupboard, window to the side and oak door to the:

Kitchen

Fitted with a range of wall and base units with work surfacing over, sink, integrated double oven, gas hob, integrated dishwasher, space for fridge freezer, tiled flooring, four skylight windows, three further windows to the side and rear and patio doors.

Shower Room

Fitted with a shower cubicle, wash hand basin, WC, heated towel rail, tiled flooring and extractor.

First Floor Landing

Having a door with access to stairs leading to bedroom three.

Bedroom One

There is a storage cupboard, open fire, TV point, radiator, storage cupboard and three bay windows.

Bedroom Two

Having a TV point, radiator and windows to the side and rear.

Bathroom

Fitted with a suite comprising of a bath, wash hand basin, WC, heated towel rail, tiled flooring, storage cupboard and window to the front.

Second Floor**Bedroom Three**

There is a storage cupboard, radiator and velux style window.

Outside Front

To the front of the property there is a gravelled driveway providing parking for two vehicles.

Rear Garden

The enclosed rear garden has a patio, lawn leading to a brick outbuilding.

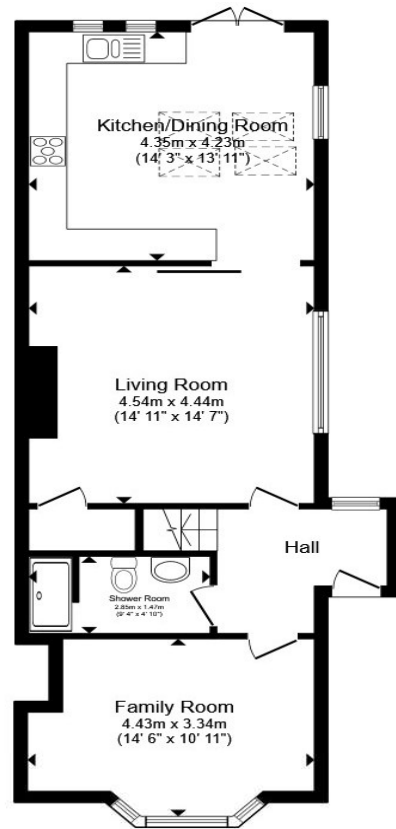
Garage / Shed

Excellent storage with the potential as a workshop or garden room.

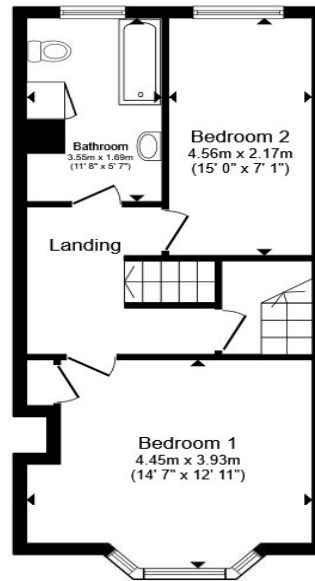


view this property online williamhbrown.co.uk/Property/SNH113092

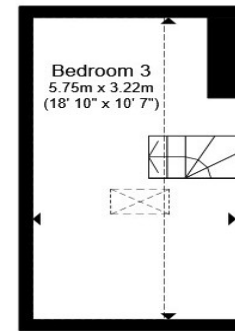




Ground Floor



First Floor



Second Floor

Total floor area 130.4 m² (1,403 sq.ft.) approx

This floor plan is for illustrative purposes only. It is not drawn to scale. Any measurements, floor areas (including any total floor area), openings and orientation are approximate. No details are guaranteed, they cannot be relied upon for any purpose and they do not form part of any agreement. No liability is taken for any error, omission or misstatement. A party must rely upon its own inspection(s). Powered by www.propertybox.io

welcome to

Grantham Road, Sleaford

- "Turnkey" home with three double bedrooms
- Two large reception rooms and modern kitchen
- Downstairs shower room
- Driveway to the front for two cars
- Versatile detached garage in garden

Tenure: Freehold EPC Rating: F

Council Tax Band: C

£280,000



Please note the marker reflects the postcode not the actual property

view this property online [williamhbrown.co.uk/Property/SNH113092](https://www.williamhbrown.co.uk/Property/SNH113092)



Property Ref:
SNH113092 - 0005

1. MONEY LAUNDERING REGULATIONS Intending purchasers will be asked to produce identification documentation at a later stage and we would ask for your co-operation in order that there is no delay in agreeing the sale. 2. These particulars do not constitute part or all of an offer or contract. 3. The measurements indicated are supplied for guidance only and as such must be considered incorrect. Potential buyers are advised to recheck measurements before committing to any expense. 4. We have not tested any apparatus, equipment, fixtures or services and it is in the buyers interest to check the working condition of any appliances. 5. Where an EPC, or a Home Report (Scotland only) is held for this property, it is available for inspection at the branch by appointment. If you require a printed version of a Home Report, you will need to pay a reasonable production charge reflecting printing and other costs. 6. We are not able to offer an opinion either written or verbal on the content of these reports and this must be obtained from your legal representative. 7. Whilst we take care in preparing these reports, a buyer should ensure that his/her legal representative confirms as soon as possible all matters relating to title including the extent and boundaries of the property and other important matters before exchange of contracts.

William H Brown is a trading name of Sequence (UK) Limited which is registered in England and Wales under company number 4268443. Registered Office is Cumbria House, 16-20 Hockliffe Street, Leighton Buzzard, Bedfordshire, LU7 1GN. VAT Registration Number is 500 2481 05.


william h brown



01529 303040



Sleaford@williamhbrown.co.uk



75 Southgate, SLEAFORD, Lincolnshire, NG34 7TA



williamhbrown.co.uk