



*59 Mudeford Lane, Dorset BH23 3HW*

*£550,000*

**Mitchells**

1963 — TODAY



## *Mudeford Lane, Dorset*

A well presented and spacious detached chalet bungalow of approximately 1280 sq ft situated in this popular residential area within easy walking distance of the historic Mudeford Quay, Avon Beach, Stanpit Marsh Nature Reserve and Fisherman's Bank.



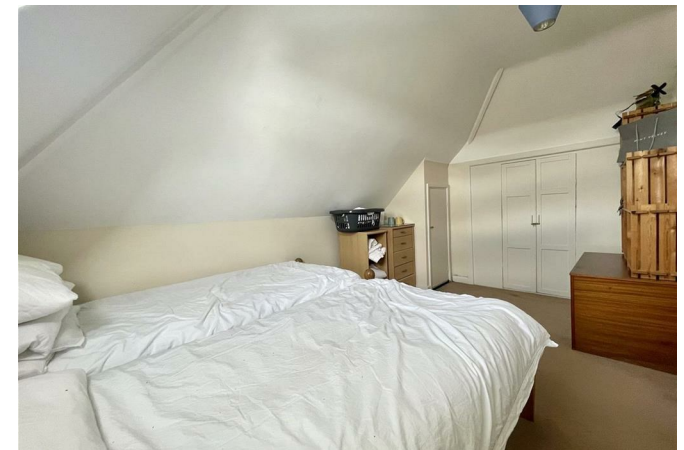
## The Property

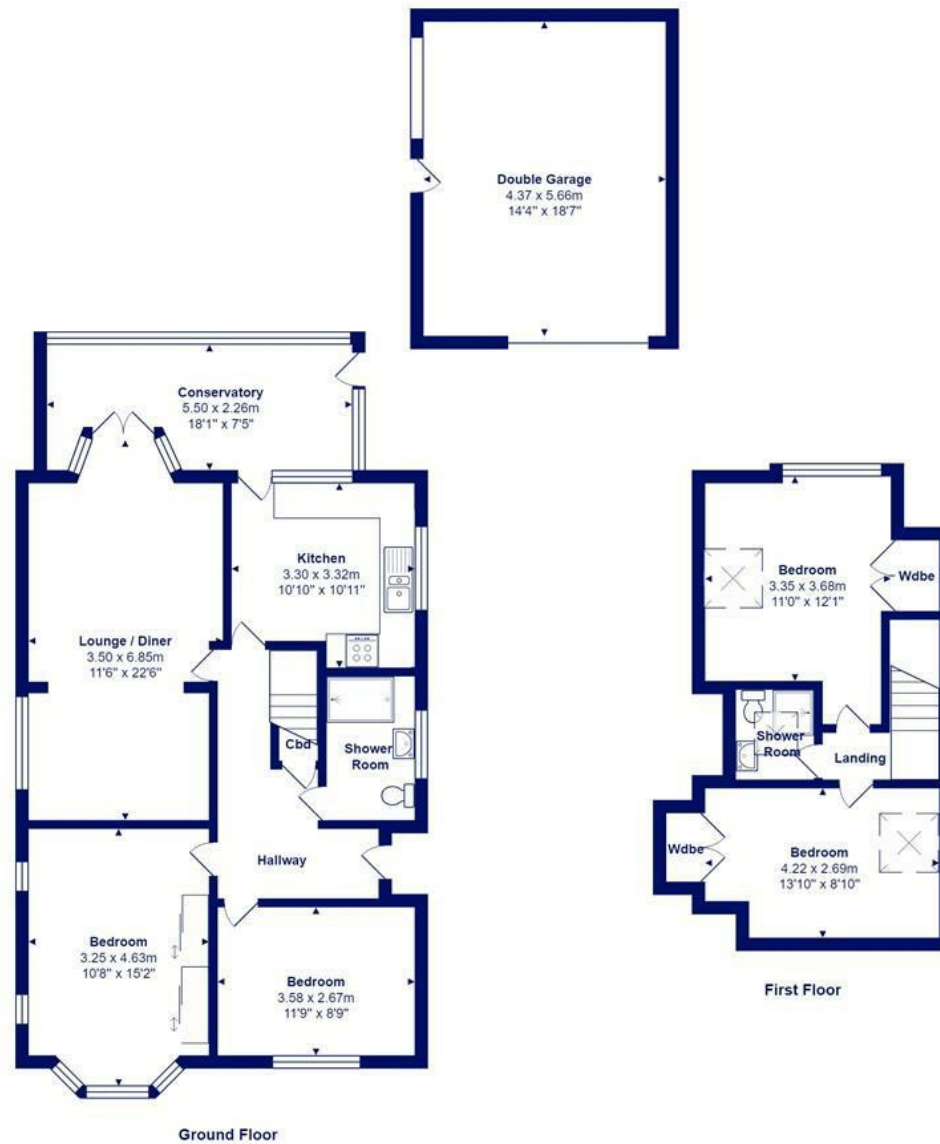
- A spacious detached chalet bungalow of approx. 1280 sq ft
- Four bedrooms ( two ground floor )
- Spacious through lounge/dining room
- Modern fitted kitchen with integrated appliances and separate conservatory extension
- Refitted ground floor shower room and first floor shower room
- Private south-west facing rear garden
- Blocked paved driveway for multiple vehicles
- Detached double garage
- Gas fired central heating, upvc double glazing and neutral décor throughout
- Situated within a short walk of the historic Mundeford Quay and the sandy Avon Beach





Location





Total Area: 118.5 m<sup>2</sup> ... 1276 ft<sup>2</sup> (excluding double garage)

All measurements are approximate and for display purposes only







[www.mitchells.uk.com](http://www.mitchells.uk.com)  
[Mudford@mitchells.uk.com](mailto:Mudford@mitchells.uk.com)  
01202 499295

Mudford  
112-114 Cambridge House Stanpit  
Christchurch  
BH23 3ND

