



## Sheen Court, TW10

£695,000

A fully refurbished, bright and contemporary apartment set within the ever desirable gated development of Sheen Court which offers approximately 770 sq ft of accommodation and is offered to the market with a Share of Freehold.

Sheen Court is a sought after residential development set within extensive communal grounds. Richmond and North Sheen stations offer tube or rail services into Central London via the District Line, South West Trains and London Overground.

### Features

- Three Bedrooms
- Spacious Reception Room
- Modern Fitted Kitchen
- Modern Shower Room
- Communal Gardens
- Residents Parking



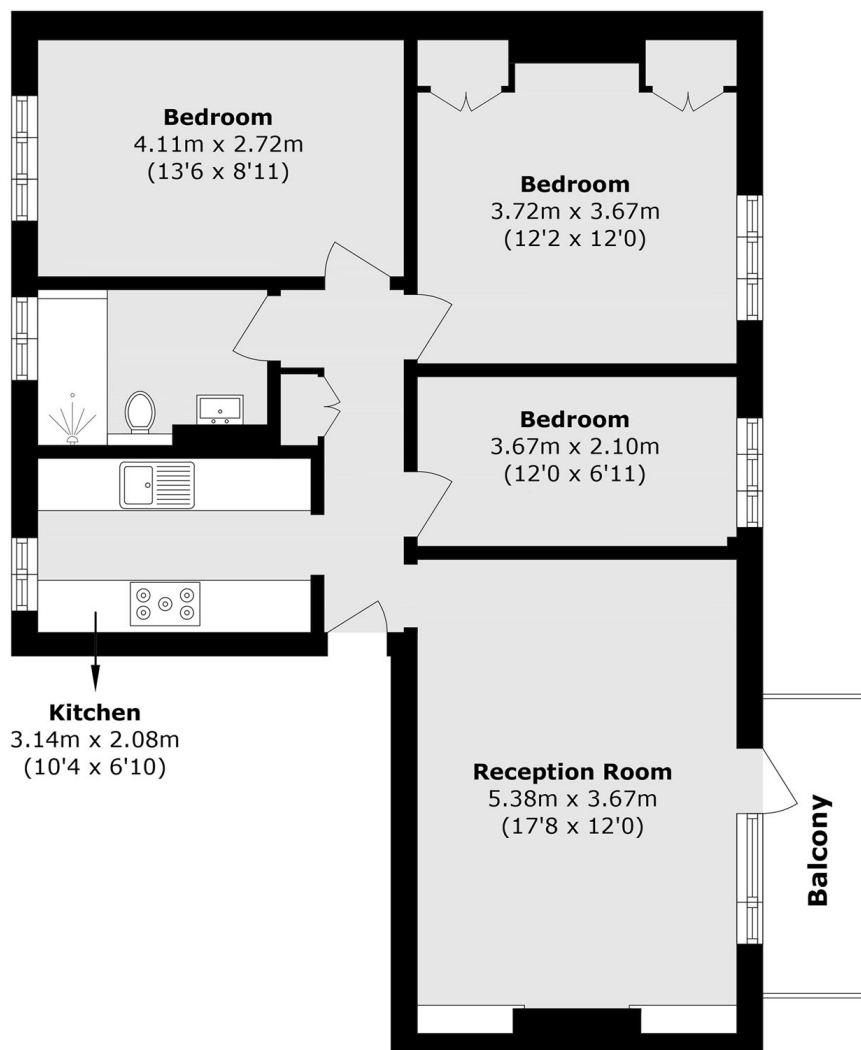
## Sheen Court, TW10

Set on the third floor, this attractive apartment boasts a well-balanced layout and plenty of natural light, making it perfectly suited to modern lifestyles. The property opens into a central hallway with useful built-in storage, leading through to a generously sized reception room that offers an inviting space for both everyday living and entertaining. A stylish, recently updated kitchen provides a practical and contemporary setting for cooking and dining.

The accommodation includes three well-proportioned double bedrooms, offering versatile space for a growing family, guests, or working from home. The apartment is completed by a modern bathroom finished to a high standard. A private balcony further enhances the appeal, offering a pleasant spot to relax outdoors.



# Sheen Court, Richmond, TW10



Total area (approx.): 71.6 sq. m (770.7 sq. ft)

Balcony area (approx.): 4.4 sq. m (47.3 sq. ft)