
DEAN & CO

ESTATE AGENTS

SALES - LETTING - AUCTIONS

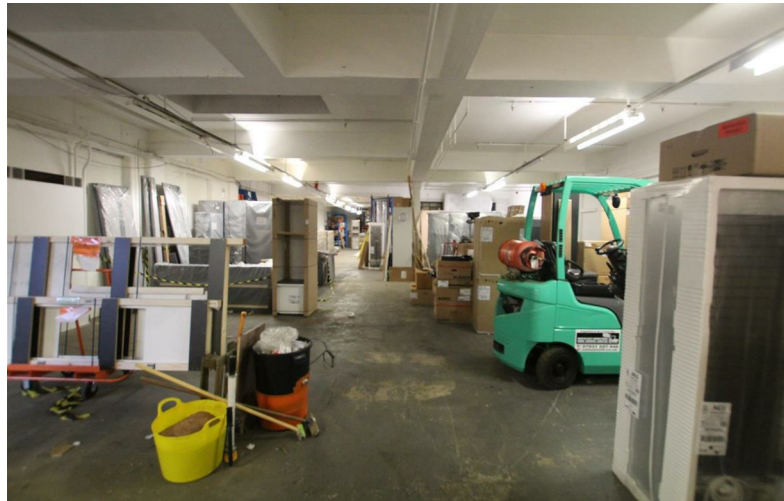
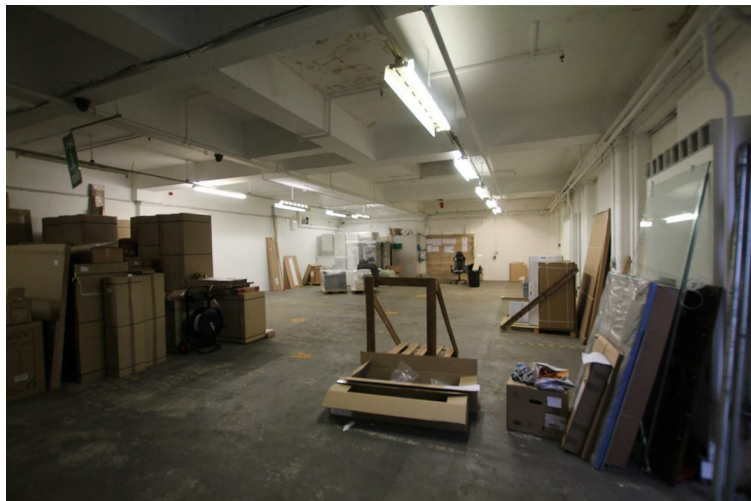


Whickham View

Newcastle upon Tyne, NE15 6UN

£4,300 Per Month

Whickham View, Newcastle upon Tyne



Description

Dean & Co Estates is pleased to present this commercial facility located in Whickham View, Newcastle Upon Tyne. The monthly rental fee of £4,300, this 4,200sqft space is perfect for a variety of businesses.

Explore the unique possibilities of this commercial space which is only 1.5 miles outside of Newcastle City Centre. The property comes with on-site parking and 24hr security camera system. This commercial unit offers convenient accessibility with a driveway leading directly to the door and is surrounded by essential amenities such as public transport and shops.

Take advantage of this prime location and affordable rent by contacting us today to arrange a viewing and learn more about this opportunity.

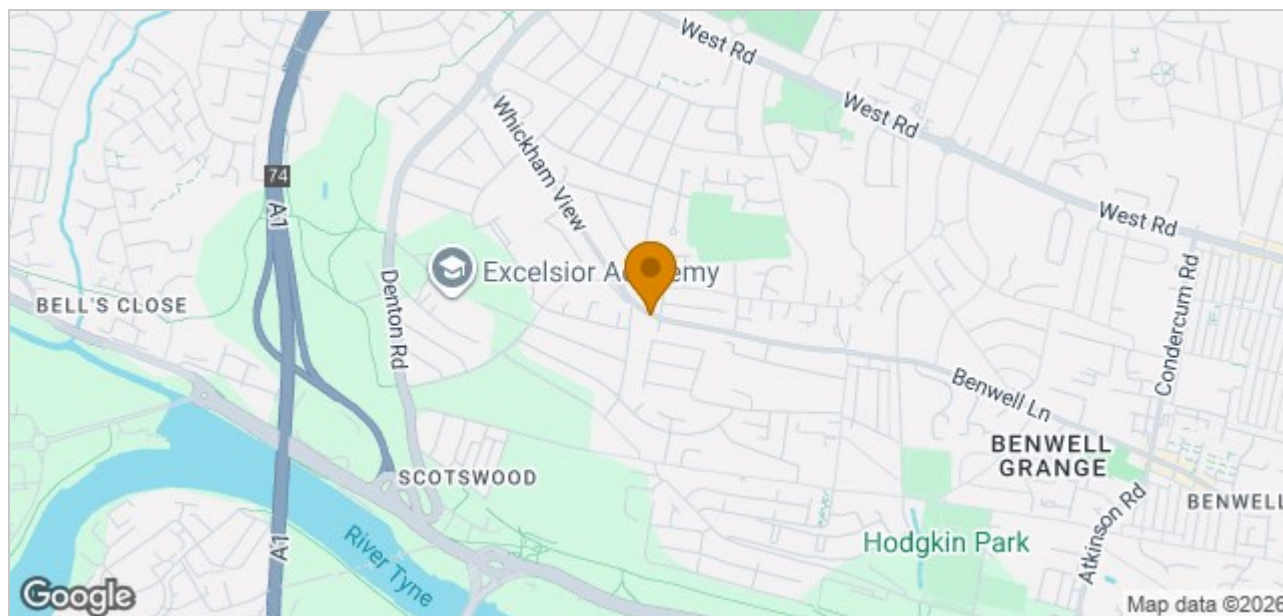
Call us now on: 0191 823 8540.



Key Features

Whickham View, Newcastle upon Tyne

Area Map



Viewing

Please contact our Dean & Co Estates Office on 0191 823 8540 if you wish to arrange a viewing appointment for this property or require further information.

These particulars, whilst believed to be accurate are set out as a general outline only for guidance and do not constitute any part of an offer or contract. Intending purchasers should not rely on them as statements of representation of fact, but must satisfy themselves by inspection or otherwise as to their accuracy. No person in this firm's employment has the authority to make or give any representation or warranty in respect of the property.

37 Hadrian Road, Newcastle Upon Tyne, Tyne and Wear, NE4 9HN
Tel: 0191 823 8540 Email: Info@dean-co.uk <https://dean-co.uk/>