



BYRNE ROAD, SW12

£525,000

- Two Double Bedrooms
- Open Plan
- Victorian Conversion
- Top Floor
- Central Balham
- Energy Rating: C





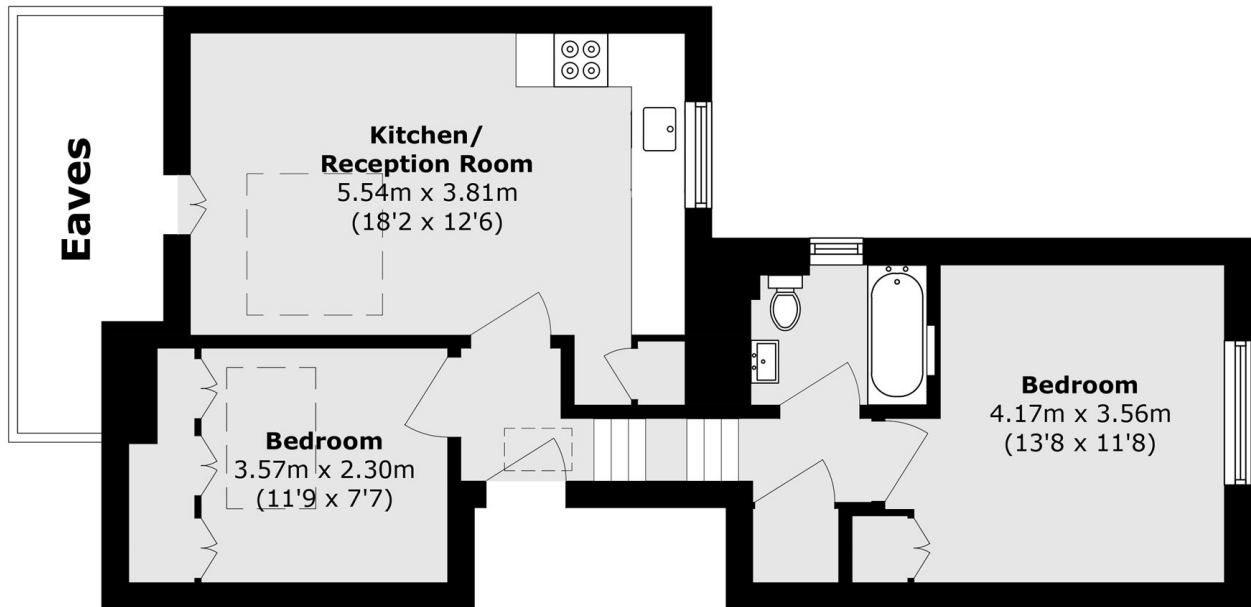
ABOUT THE HOME

A spacious split level two bedroom top floor apartment in excellent condition throughout. This lovely Victorian conversion flat has two double bedrooms, a modern bathroom and an open plan kitchen/living space. It offers no onward chain and a share of the freehold.

Byrne Road is located in Central Balham, just moments from a host of amenities, including shops, bars, restaurants and supermarkets. Tooting Bec common is also within easy reach as are Balham mainline and underground stations.







Total area (approx.): 53.5 sq. m (575.8 sq. ft)
(Excluding Eaves)

JACKSONS BALHAM

8-11 Balham Station Road,
London, SW12 9SG
Sales: 020 8675 6555
Lettings: 020 8675 6565

Energy Rating: We aim to make our particulars both accurate and reliable. However they are not guaranteed; nor do they form part of an offer or contract. If you require clarification on any points then please contact us, especially if you're traveling some distance to view. Please note that appliances and heating systems have not been tested and therefore no warranties can be given as to their good working order.