

Flat 5, 5 Whitelow Road, Chorlton, Manchester, M21 9HQ



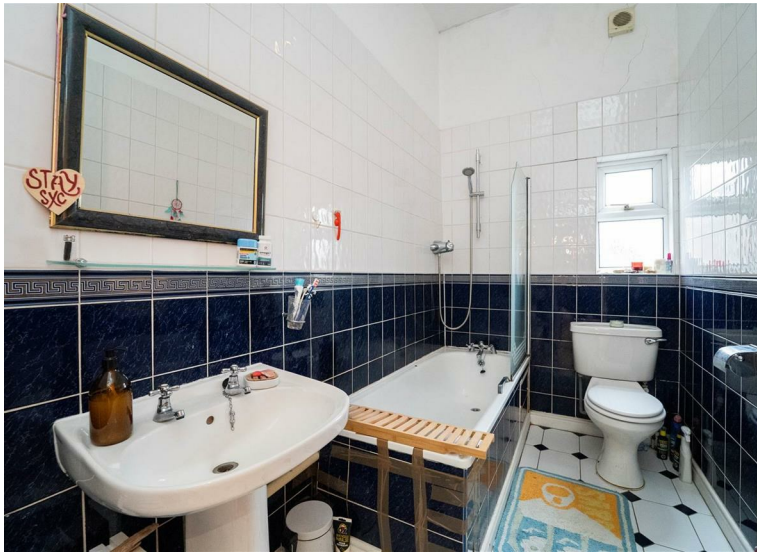
JP&Brimelow
ESTATE AGENTS

Offers In The Region Of £285,000

2 1 1 D

VIDEO TOUR AVAILABLE A spacious TOP FLOOR apartment featuring TWO DOUBLE BEDROOM, ideally situated on Whitelaw Road in the heart of Chorlton. Just a five-minute walk from the Wilbraham Road Metrolink station, offering direct links to the City Centre, MediaCity, and Manchester International Airport. The property is also within easy reach of Chorlton's popular independent shops, restaurants, and bars, with the sought-after Chorlton Green on Beech Road only a short stroll away. The thoughtfully designed accommodation comprises a communal entrance hallway, a private entrance hall, a generous lounge/diner, a fitted kitchen, two double bedrooms, and a three-piece bathroom. The apartment also benefits from gas-fired central heating, an intercom system, and off-road parking.





EPC Chart

Energy Efficiency Rating		Current	Potential
Very energy efficient - lower running costs			
(92 plus)	A		
(81-91)	B		
(69-80)	C		
(55-68)	D	65	78
(39-54)	E		
(21-38)	F		
(1-20)	G		
Not energy efficient - higher running costs			
England & Wales		EU Directive 2002/91/EC	



Tenure: **Leasehold** Council Tax Band: **B**

Top Floor



JP & Brimelow Estate Agents Ltd
 430 Barlow Moor Road, Manchester, M21 8AD
 Tel: 0161 8822233
 E: sales@jpbrimelow.co.uk www.jpandbrimelow.co.uk



JP & Brimelow
 ESTATE AGENTS

NOTICE: JP & Brimelow Estate Agents Ltd for themselves and for the vendors or lessors of this property whose agents they are give notice that:

- (i) the particulars are set out as a general outline only for the guidance of intending purchasers or lessees, and do not constitute, nor constitute part of, an offer or contract;
- (ii) all descriptions, dimensions, references to the condition and necessary permissions for use and occupation, and other details are given in good faith and are believed to be correct but any intending purchasers or tenants should not rely on them as statements or representations of fact but must satisfy themselves by inspection or otherwise as to the correctness of each of them;
- (iii) no person in the employment of JP & Brimelow Estate Agents Ltd has any authority to make or give any representation or warranty whatever in relation to this property.

jpandbrimelowestateagents

@jpandbrimelow