

## Kingsway, Petts Wood, BR5

5 3 2

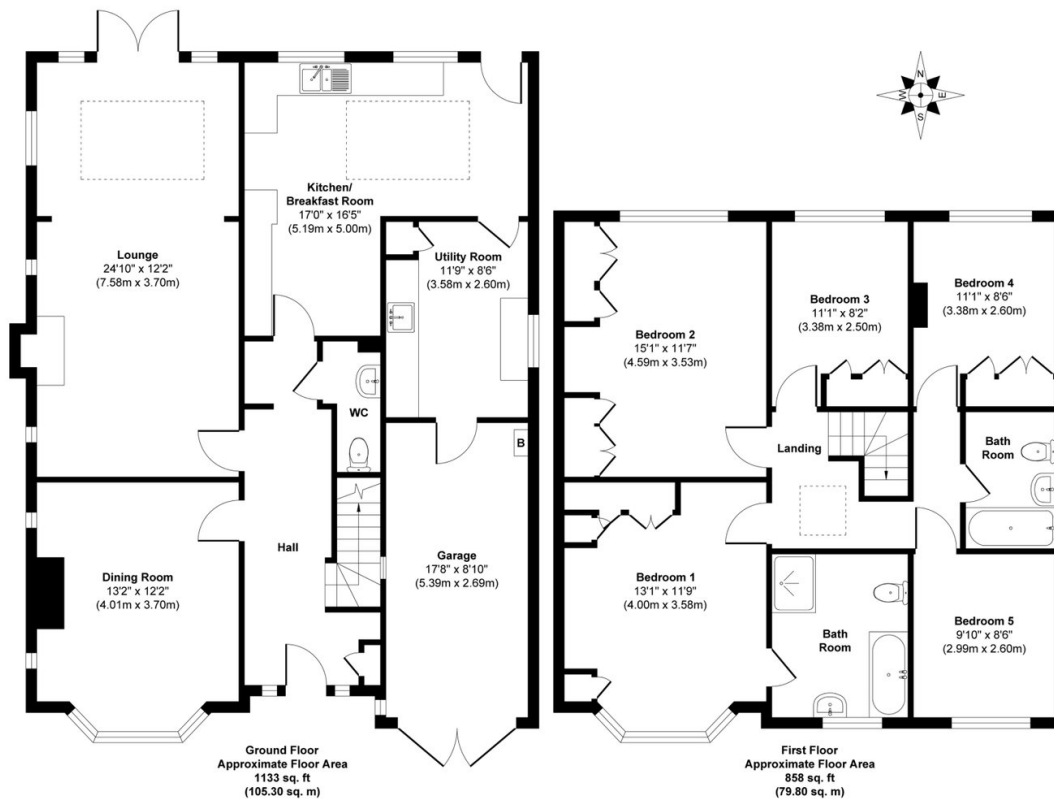


A rare opportunity to acquire this substantial five-bedroom detached family home in the heart of sought-after Petts Wood East. Full of character and charm, this beautifully maintained 1930s home offers versatile family living with multiple reception spaces, a stunning breakfast kitchen, generous rear garden, garage, and exciting future extension potential (STPP). Positioned within easy reach of Petts Wood Station, excellent schools, Station Square amenities, and National Trust woodland, this is the kind of forever family home that rarely comes to market.

### Key Features

- Please Quote RF0924 for all Enquiries
- Multiple versatile reception spaces ideal for family living and entertaining
- Stunning breakfast kitchen with granite worktops, Butler sink & Rangemaster cooker
- Beautiful mature rear garden perfect for families and summer hosting
- Walking distance to Petts Wood Station, Station Square amenities & excellent schools
- Exceptional 1930s detached family home in sought-after Petts Wood East
- Five well-proportioned bedrooms including principal suite with en-suite
- Separate utility room, downstairs cloakroom, garage & private driveway parking
- Previous planning approval presents exciting future extension potential (STPP)
- Close to beautiful National Trust woodland – ideal for weekend walks and family lifestyle

#### Kingsway, Petts Wood, BR5



Approx. Gross Internal Floor Area 1991 sq. ft / 185.10 sq. m

Illustration for identification purposes only, measurements are approximate, not to scale.  
Produced by Elements Property