



4 Arundel Way, Christchurch BH23 5DX

£549,950

Mitchells

1963 — TODAY



Arundel Way, Christchurch

Standing on a private cliff top and enjoying breath taking uninterrupted sea views over Christchurch Bay to the Isle of Wight and The Needles, in the east lies Hengistbury Head, Mudeford Quay, Christchurch Harbour and the Purbecks the west.

This particularly spacious two double bedroom top floor balcony apartment has been thoroughly refurbished in recent years to a particularly high standard and features high quality fitments throughout. Viewing highly recommended in order to fully appreciate the quality of this frontline apartment and the truly amazing sea views. A hidden gem! No forward chain.



The Property

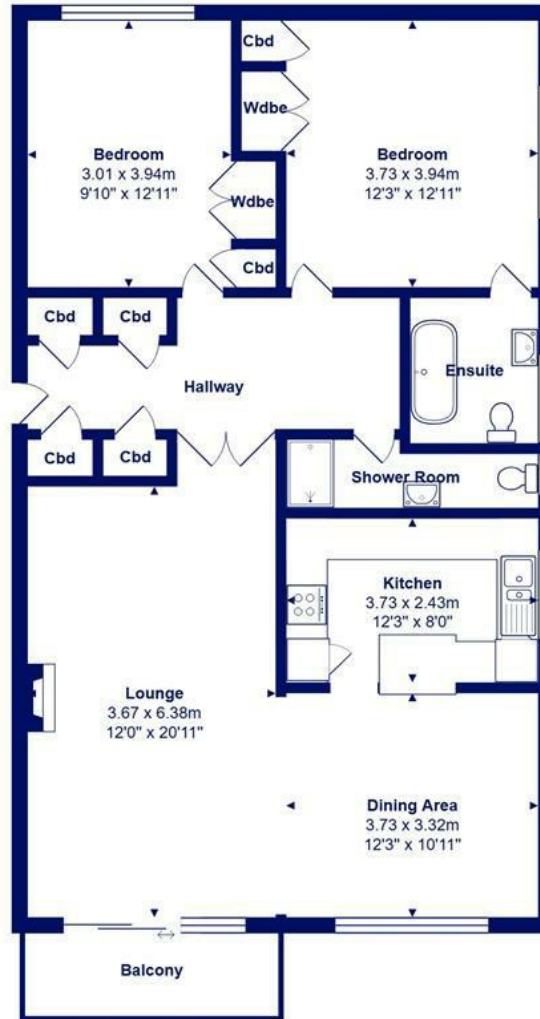
- Stunning south facing front line balcony apartment
- Breath taking sea and coastal views from the principal rooms
- Exclusive location standing on a private cliff top, not overlooked and with gated access to the beach below
- Two double bedrooms both with built-in floor to ceiling wardrobes and adjoining shelves and drawers
- Fabulous open-plan living accommodation with luxury fitted kitchen
- Luxury en-suite bathroom and separate shower/cloakroom
- Gas fired central heating, upvc double glazing & plantation shutters and excellent taste throughout
- Four, floor to ceiling large cupboards with shelves for linen etc, one with sturdy rail for outer garments and boots, one for storage, one for long domestic appliances, sun beds etc suitcases and all illuminated on opening the doors
- Single garage adjacent to Fulmer Court
- Shared Freehold, balance of a 231 year lease from 1968, Maintenance £575 per 1/4





Location





Total Area: 100.3 m² ... 1079 ft² (excluding balcony)
 All measurements are approximate and for display purposes only







www.mitchells.uk.com
Highcliffe@mitchells.uk.com
01425 272206

Highcliffe
284 Lymington Road
Highcliffe
Christchurch
BH23 5ET

