

est 1979

 Jeremy
Leaf & Co.



Dollis Avenue, Finchley, N3

£1,250,000

- Underfloor heating throughout
- Off-street parking
- High specification
- Fitted wardrobes to every bedroom
- Air conditioning
- Electric car charging point

863 High Road, London, N12 8PT
020 8446 4295

newhomes@jeremyleaf.co.uk
<https://www.jeremyleaf.co.uk/>

Dollis Avenue, Finchley, London, N3 1BY

A superb new high specification development of just four 3 bedroom apartments located on the highly sought after tree-lined Dollis Avenue with off street parking and a lift to all floors.

The property is situated just 0.4 miles from Finchley Central Tube Station (Northern Line), multiple bus routes and a wide array of local cafes, shops and restaurants.

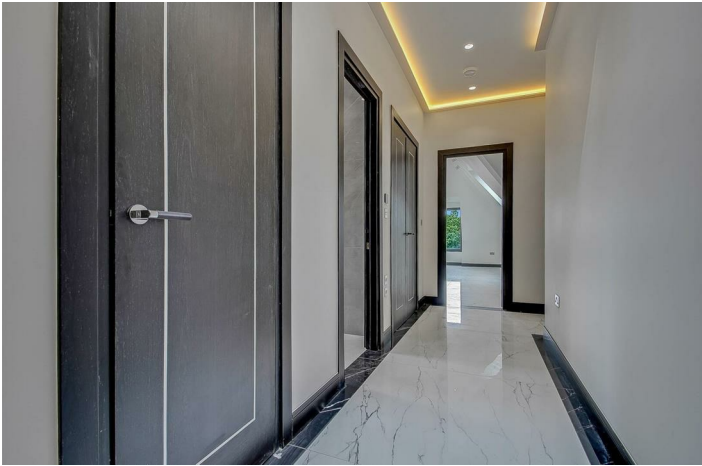
Features include:

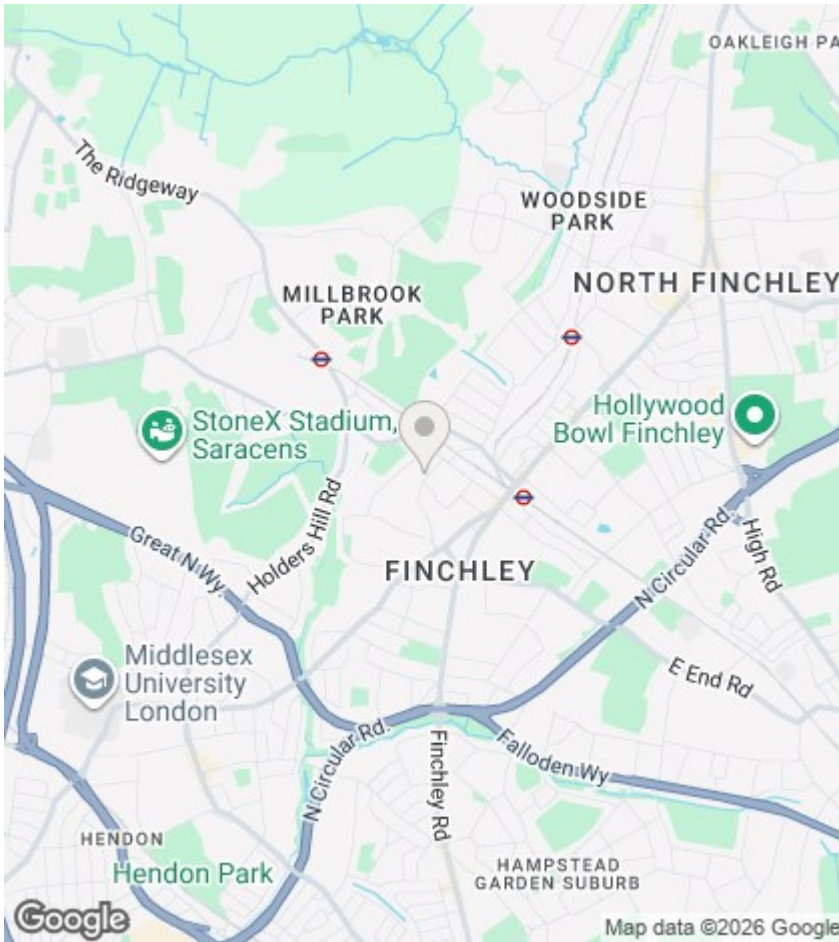
- Schmitz kitchens with Quartz worktops & Quooker hot water tap
- Integrated Miele appliances including full height fridge & freezer
- Fitted wardrobes to every bedroom
- Vaillant gas boiler
- Air conditioning
- Underfloor heating throughout
- Video entry system



Council Tax Band: New Build







Directions

Viewings

Viewings by arrangement only. Call 020 8446 4295 to make an appointment.

EPC Rating:

Energy Efficiency Rating		Current	Potential
Very energy efficient - lower running costs			
(92 plus)	A		
(81-91)	B		
(69-80)	C		
(55-68)	D		
(39-54)	E		
(21-38)	F		
(1-20)	G		
Not energy efficient - higher running costs			
England & Wales		EU Directive 2002/91/EC	

