



Guide Price
£700,000

Freehold

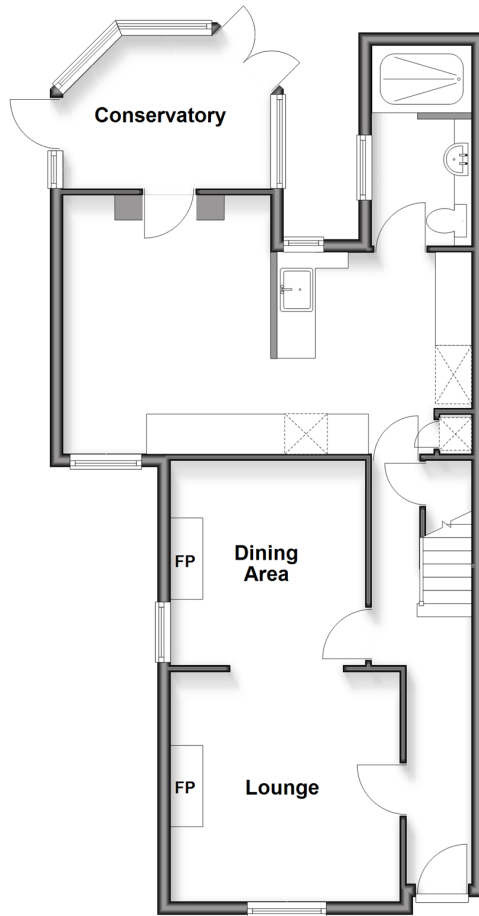
3x  2x  3x 

**High Street, Lindfield,
Haywards Heath, West
Sussex, RH16**

cubitt & west
Helping you move forwards

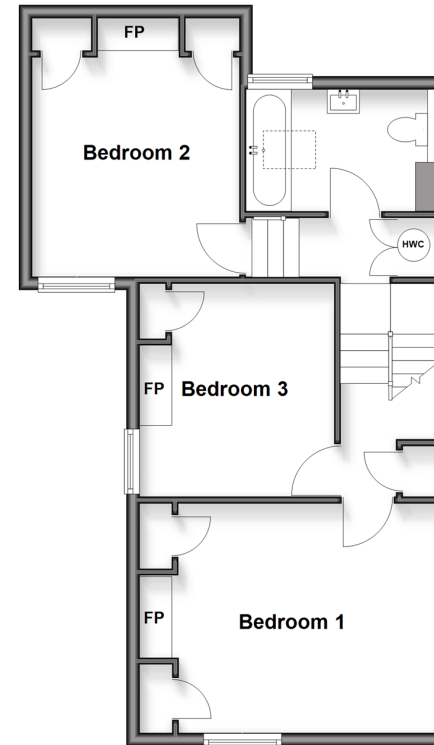
Ground Floor

Approx. 66.1 sq. metres (711.3 sq. feet)



Split Level First Floor

Approx. 54.4 sq. metres (585.3 sq. feet)



Accommodation

GROUND FLOOR

Hallway

Lounge: 11'8 x 10'11 (3.56m x 3.33m)

Dining Area: 11'9 x 11'8 (3.58m x 3.56m)

Kitchen/Breakfast Room: 20'8 x 13'1
(6.30m x 3.99m)

Conservatory: 11'9 x 8'7 (3.58m x
2.62m)

Shower Room

FIRST FLOOR

Landing

Bedroom 1: 15'5 x 11'8 (4.70m x 3.56m)

Bedroom 2: 13'1 x 10'5 (3.99m x 3.18m)

Bedroom 3: 10'6 x 10'0 (3.20m x
3.05m)

Bathroom

OUTSIDE

Front and Rear Garden



Main features

- Located on Lindfield's historic High Street
- A short walk from Haywards Heath Station
- Period features including cast iron fireplaces
- Wood burner and Rayburn
- 3 Reception rooms
- All bedrooms are doubles with built-in wardrobes
- Two bathrooms
- Secluded rear garden
- Opposite Lindfield Common



Nearest Schools

Primary Schools: Lindfield Primary 0.1 miles, Blackthorns Community Primary, Lindfield 0.2 miles

Secondary Schools: Oathall Community College 0.5 miles, Ardingly College 2.1 miles, Warden Park School 2.2 miles



Transport Information

Train Stations: Haywards Heath 1.1 miles, Wivelsfield 3.5 miles, Balcombe 3.9 miles



Address

High Street, Lindfield, Haywards Heath, West Sussex, RH16



Directions

For directions to this property please contact us.



cubitt&west
Helping you move forwards

Call Haywards Heath Branch 01444 411132 ■ cubittandwest.co.uk



■ Legal advice should be taken to verify fixtures/fittings, planning, alterations and/or lease details ■ Appliances & services are untested, dimensions are approximate and floor plans are not to scale



22706252/20260203/DD/DD