

Deposit Alternative Available



Price

£1,800 PCM

Fees Apply

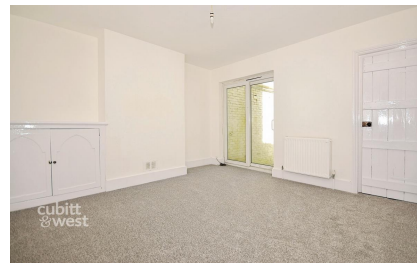


Available 30/05/26

**Ford Road Arundel
BN18**

cubitt & west

Helping you move forwards



Main Features

- Open House Event
- Alternative Deposit Option
- Charming Period Townhouse over Three Floors
- Two Reception Rooms & Garden Access
- Kitchen with Range Oven
- 4 Double Bedrooms with Rural Field Views



Deposit required is £2,076.92
Arun District - Council Tax Band Tax Band C

Renting a property is a big commitment and we recommend that you visit the local authority website and these websites which offer helpful information and advice about letting

www.gov.uk/government/publications/how-to-rent

www.gov.uk/private-renting

www.cubittandwest.co.uk/renting/tenancy-fees-individuals/

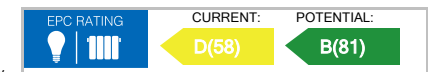
www.gov.uk/green-deal-energy-saving-measures

Call Chichester 01243 774772 ■ cubittandwest.co.uk

IMPORTANT INFORMATION: Please contact our Lettings Team who will confirm the total costs involved in renting this property. For clarification, we wish to inform the prospective tenant that we have prepared these details as a general guide. The agent has not carried out a detailed survey nor tested the services, appliances, or specific fittings (unless otherwise stated), and no warranty can be given as to their condition. All room measurements are taken at floor level. We strongly recommend that all the information which we provide about the property is verified by yourself and your advisers. The contents of this publication are © Cubitt & West, 2015. Cubitt & West is a trading name of Arun Estates Limited Registered in England No. 2597969

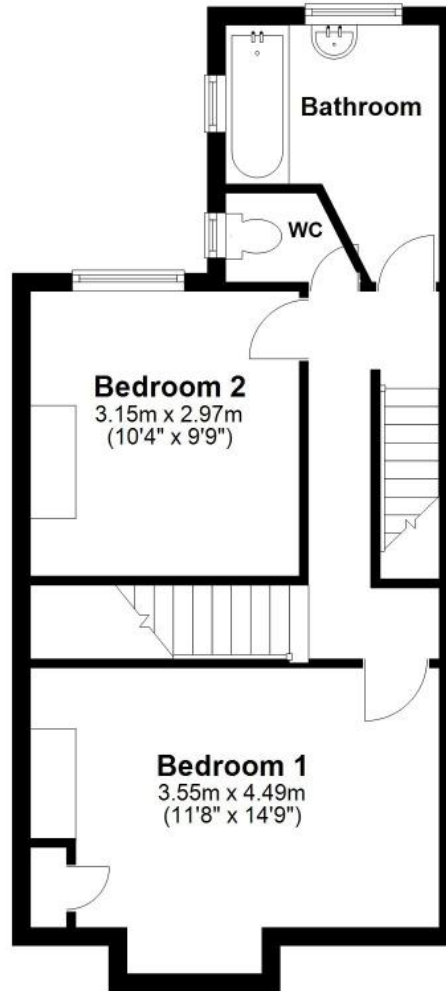
Accommodation

- Living Room 11'8 x 11'3
- Dining Room 12'3 x 12'1
- Kitchen 9'4 x 7'9
- Bedroom 1 14'9 x 11'8
- Bedroom 2 10'4 x 9'9
- Bathroom 9'4 x 7'9
- WC 4'8 x 2'8
- Bedroom 3 14'9 x 10'2
- Bedroom 4 14'9 x 9'5



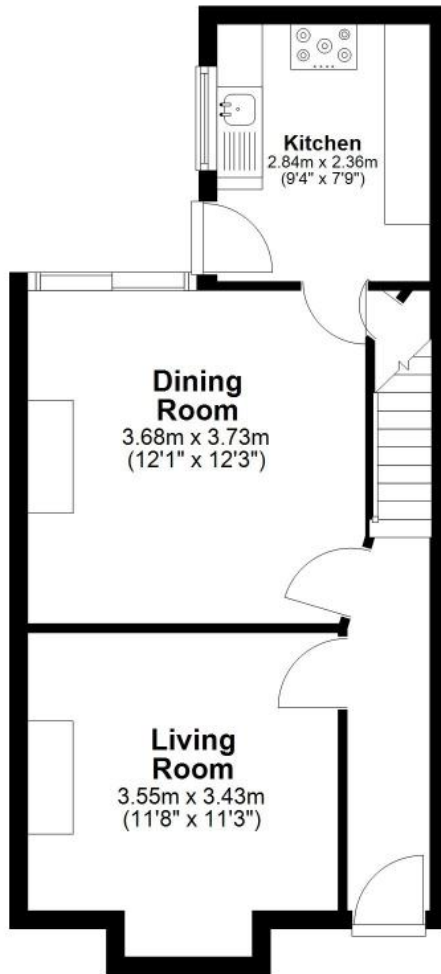
First Floor

Approx. 39.5 sq. metres (425.1 sq. feet)



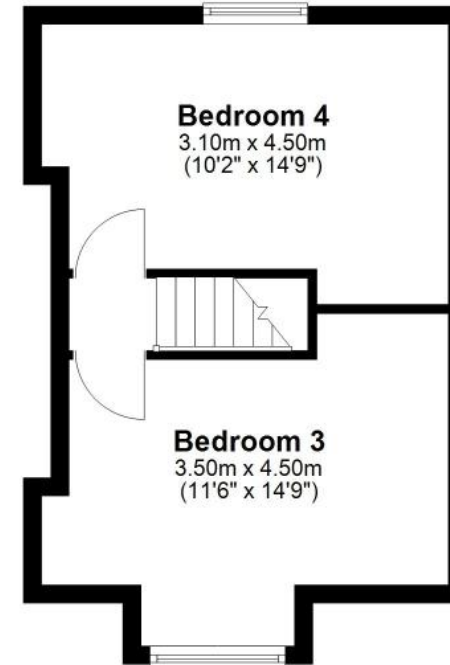
Ground Floor

Approx. 38.1 sq. metres (410.5 sq. feet)



Second Floor

Approx. 27.9 sq. metres (300.3 sq. feet)



Total area: approx. 105.5 sq. metres (1135.9 sq. feet)