



Colville Terrace, W11

£1,250,000

Dexters



Colville Terrace, W11

A split level, two bedroom apartment on the top floors of a Victorian conversion.

The property has a spacious open plan reception with room to dine, high ceilings and access to the balcony. On the lower floor are the bedrooms, with built-in storage in the principal bedroom.

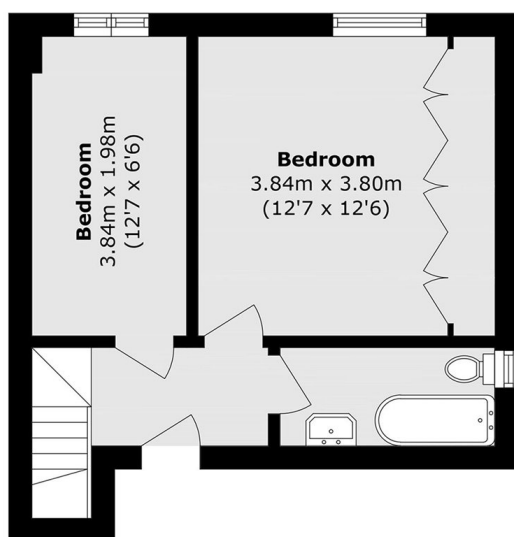
Colville Terrace is ideally located, just moments away from the trendy boutiques, cafes, and restaurants of Portobello Road and Notting Hill Gate. There is excellent transport links nearby including Notting Hill Gate Underground Station (District, Circle & Central lines).

Features

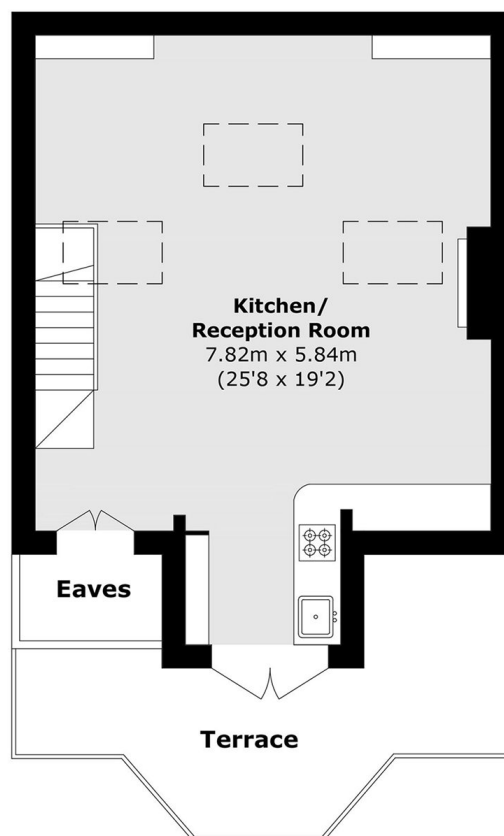
- Two Bedrooms
- Victorian Conversion
- Open Plan
- Private Roof Terrace
- Split Level
- Notting Hill



Colville Terrace, London, W11



Third Floor



Fourth Floor

Total area (approx.): 71.8 sq. m (772.8 sq. ft)
(Excluding Eaves)

Terrace area (approx.): 13.1 sq. m (141.0 sq. ft)