



Room 4, Tamworth Road, Long Eaton
£725 pcm

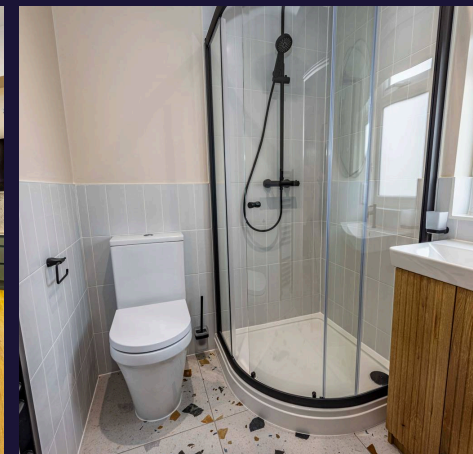
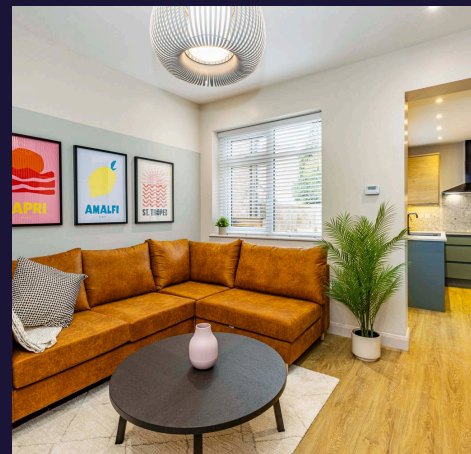


Tamworth Road

Prepare to be impressed by this stunning semi-detached shared house, fully renovated to the highest standard, offering a luxurious living experience. Step inside to discover a beautifully designed en-suite bedroom, complete with built-in storage and kitchenette for added convenience. The property boasts triple glazing, ensuring a peaceful atmosphere and energy efficiency.

The heart of this home is the shared living space, ideal for socialising with housemates and relaxing after a long day. The modern kitchen features built-in appliances, perfect for whipping up culinary delights. With bills included, enjoy hassle-free living in this immaculately maintained property.

Located in a vibrant neighbourhood, this home is surrounded by local amenities, providing everything you need within easy reach. Don't miss the opportunity to view this exquisite property and experience its charm firsthand.



Additional benefits include access to a shared garden featuring a shed, an outhouse, and convenient side access from the front of the property. Available now, this fully furnished property includes all bills. Bedroom 4 is located on the third floor, offering privacy and comfort.

Prepare to be impressed by this stunning semi-detached shared house, fully renovated to the highest standard, offering a luxurious living experience. Step inside to discover a beautifully



Bedroom With Kitchenette

21' 4" x 13' 7" (6.51m x 4.14m)

Bedroom 4 is located on the top floor of the property and offers a fantastic blend of comfort and practicality. This well-appointed room features its own private kitchenette, complete with sink, fridge, microwave, and storage cabinets – perfect for added independence. The bedroom comes fully furnished and includes built-in storage, providing both style and convenience.

En-suite Bathroom

6' 2" x 5' 7" (1.88m x 1.70m)

This contemporary en-suite bathroom features a sleek shower cubicle, sink with vanity unit, mirror, toilet, and radiator. Finished in neutral tones, the space feels bright, fresh, and modern.

Lounge

11' 9" x 10' 4" (3.59m x 3.15m)

This inviting shared lounge, located on the ground floor, has been decorated to a modern standard and offers a comfortable space to relax. The room comes complete with a sofa, breakfast bar and stools, coffee table, and TV. There's also a convenient cupboard housing the shared washing machine.

Kitchen

11' 2" x 7' 3" (3.40m x 2.21m)

The modern kitchen is beautifully finished and fully equipped with built-in appliances, offering ample worktop space and plenty of storage. Appliances include an oven, hob, extractor fan, microwave, dishwasher, tumble dryer, large fridge/freezer, and sink – everything you need for modern, convenient living.





FLOOR 1

GROSS INTERNAL AREA
 FLOOR 1 40.6 m² FLOOR 2 42.3 m² FLOOR 3 27.2 m²
 TOTAL : 110.1 m²
 SIZES AND DIMENSIONS ARE APPROXIMATE, ACTUAL MAY VARY.



FLOOR 2

GROSS INTERNAL AREA
 FLOOR 1 40.6 m² FLOOR 2 42.3 m² FLOOR 3 27.2 m²
 TOTAL : 110.1 m²
 SIZES AND DIMENSIONS ARE APPROXIMATE, ACTUAL MAY VARY.



FLOOR 3

GROSS INTERNAL AREA
 FLOOR 1 40.6 m² FLOOR 2 42.3 m² FLOOR 3 27.2 m²
 TOTAL : 110.1 m²
 SIZES AND DIMENSIONS ARE APPROXIMATE, ACTUAL MAY VARY.



Comfort Estates

Comfort Estates, 47 Derby Road - NG1 5AW

0115 933 8997 • info@comfortestates.co.uk • www.comfortestates.co.uk