



LANG TOWN
© & COUNTRY

5 Dorado Street, Sherford, Plymouth, Devon, PL9 8FX



Price £440,000



Lang Town & Country are proud to offer this spacious and well-presented five-bedroom semi-detached family home, arranged over three floors, offering flexible and versatile accommodation ideal for a wide range of buyers.

The ground floor features a bright and expansive open-plan living space, including a generous lounge with French doors opening onto a westerly-facing garden. This flows seamlessly into an L-shaped kitchen/diner, complete with a modern fitted kitchen boasting a range of integrated appliances perfect for both everyday living and entertaining.

On the first floor, there is an additional reception room which could easily serve as a sixth bedroom, depending on requirements. This level also hosts two bedrooms, including a well-proportioned master bedroom with fitted wardrobes and an en-suite bathroom. The second floor offers three further bedrooms along with a contemporary family bathroom, providing ample space for growing families or guests.

Externally, the property benefits from a pleasant outlook to the front over an attractive area of open public space. A gated entrance leads to a low-maintenance front garden. To the rear, the westerly-facing garden features a patio area ideal for outdoor dining and entertaining, with steps leading down to a lawned garden—perfect for children to play safely. Additional benefits include a dual-access garage, as well as further off-road parking to the rear.

Sherford is a highly sought-after and growing community on the outskirts of Plymouth, designed with a strong focus on green spaces and modern living. The area offers a range of local amenities including shops, cafés, and a primary school, along with excellent transport links to Plymouth city centre, the A38, and surrounding areas—making it ideal for families and commuters alike.

Agent Note: The development is run by a management company and there is a yearly charge of £276.28 Per year for the maintenance and upkeep of the estate. The details of which should be confirmed by your solicitor.

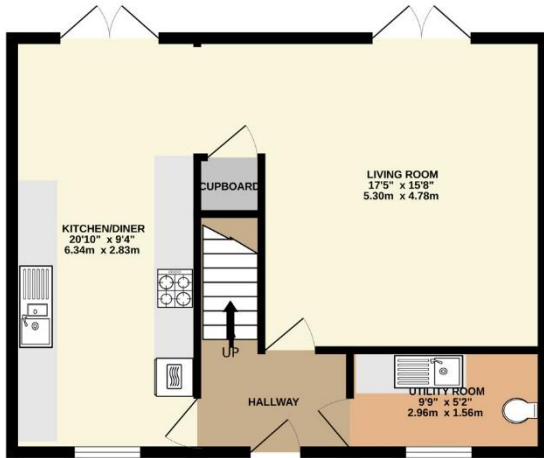


To view this property call Lang Town & Country Estate Agents on **01752 456000**

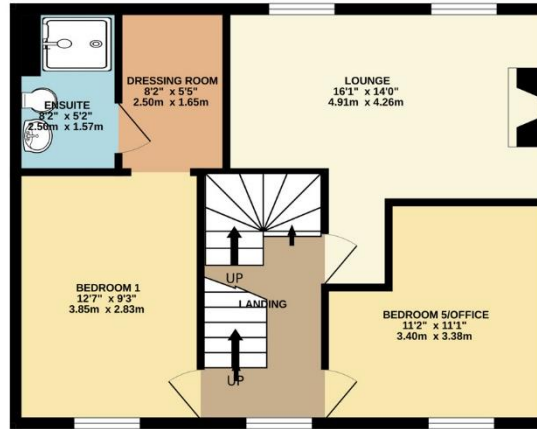
www.langtownandcountry.com



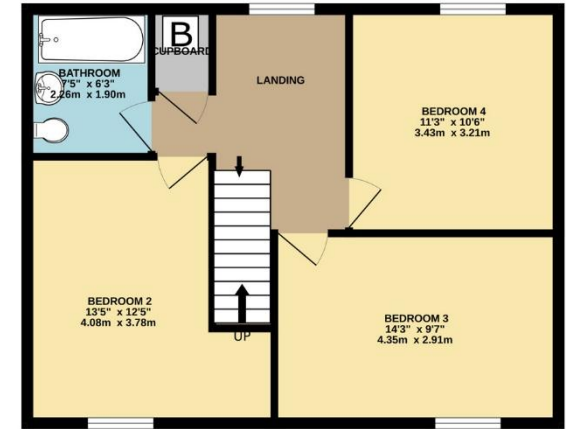
GROUND FLOOR
555 sq.ft. (51.6 sq.m.) approx.



1ST FLOOR
546 sq.ft. (50.7 sq.m.) approx.



2ND FLOOR
555 sq.ft. (51.6 sq.m.) approx.



TOTAL FLOOR AREA : 1656 sq.ft. (153.9 sq.m.) approx.
Measurements are approximate. Not to scale. Illustrative purposes only
Made with Metropix ©2026



Lang Town & Country
6 The Broadway
Plymouth
PL9 7AU
Tel: 01752 456000
Email: plymstock@langtownandcountry.com
www.langtownandcountry.com

Lang Town & Country endeavour to ensure the accuracy of property details produced and displayed, we have not tested any apparatus, equipment, fixtures, fittings or services and so cannot verify that they are connected, in working order or fit for purpose. A buyer must check the availability of any property and make an appointment to view before embarking on any journey to see a property.

