

## New Union Square, SW11

£3,900 Per calendar month

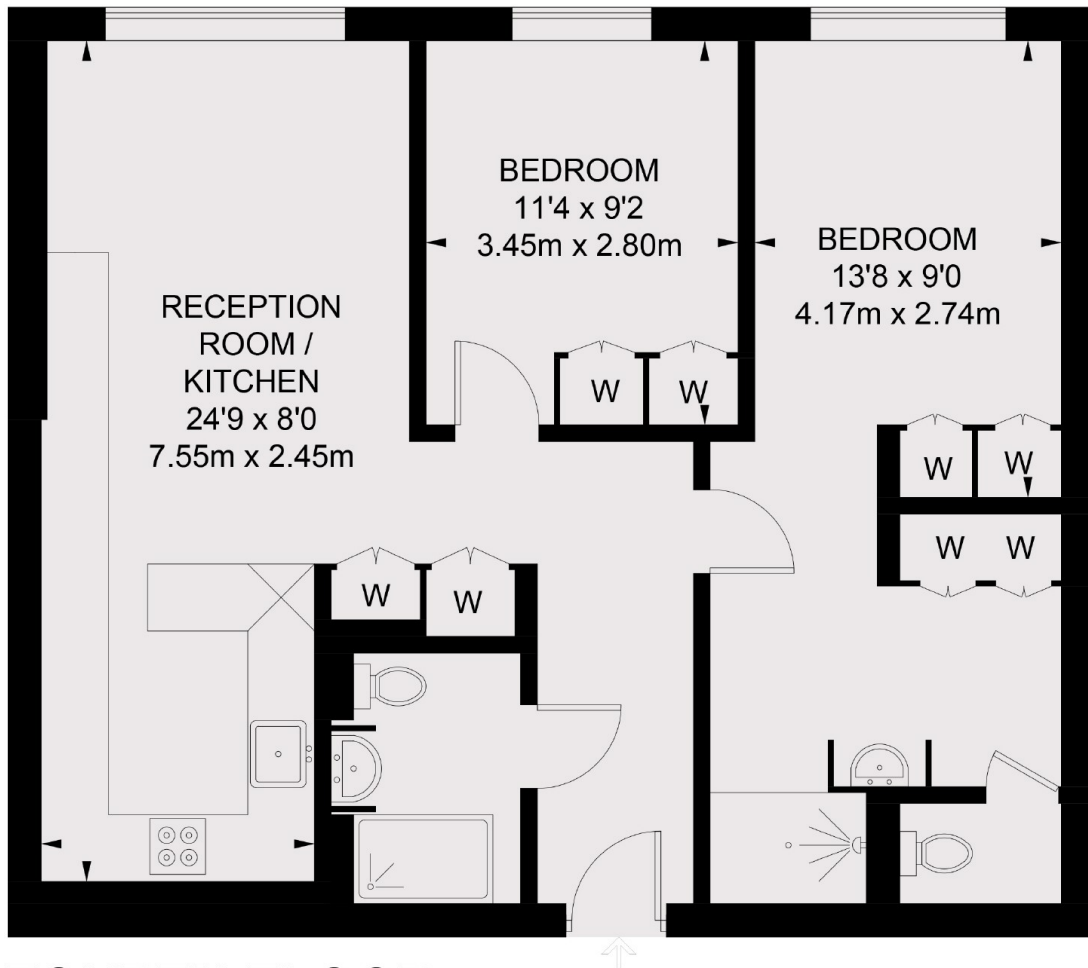
A stunning two double bedroom apartment available to let within Embassy Gardens. The property also offers two bathrooms and a living room with open plan kitchen and all of the wonderful features that this development has to offer including, 24 hour concierge, residents cinema, swimming pool, gym and spa.

Embassy Gardens is a new development located in the very exciting Nine Elms area home to the Battersea Power Station close to transport links including Vauxhall underground and bus station.

### Features

Luxury Development  
Premium Facilities  
High Specification  
Two Bedrooms  
Two Bathrooms  
Available ASAP

# New Union Square, London, SW11



## FOURTH FLOOR

TOTAL APPROX. FLOOR AREA 764 SQ. FT. (71 SQ. M.)