



Stoneacre  
Properties



## Eberston Terrace

Leeds, LS6 1AU

Offers Over £190,000



# Ebberston Terrace

Leeds, LS6 1AU

Offers Over £190,000



## ENTRANCE

Entering the property via the stairs from the ground floor, you're welcomed into the entrance hallway which offers access to two of the bedrooms.

## BEDROOM 1

Great sized double bedroom with large dual windows overlooking the front street with laminate wood flooring.

## BEDROOM 2

A further spacious double bedroom with large dual windows finished with laminate wood flooring.

## BEDROOM 3

To the top floor you'll find a spacious double bedroom with dual windows and laminate wood flooring.

## BATHROOM

also located on the top floor, this fully tiled 3-piece bathroom comprises shower, W/C and toilet.

## KITCHEN/LIVING ROOM

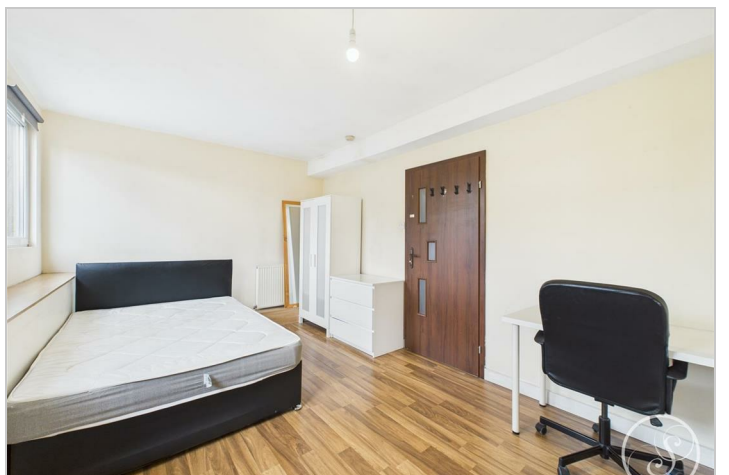
The kitchen is made up of wall and base units and comprises gas hob with extractor. The lounge area completes the top floor.

## EXTERNAL

Externally, the property is set in a cul-de-sac and offers on street parking.

## LEASE

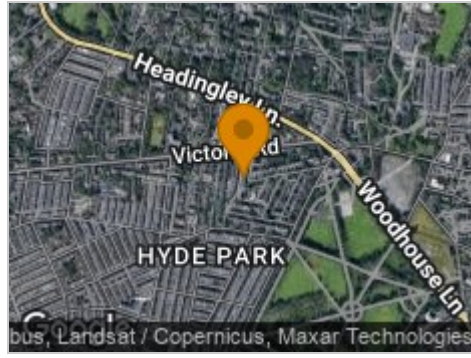
Lease extension completed November 2025 – new 170-year lease with peppercorn ground rent. Buyers are advised to obtain verification from their solicitor



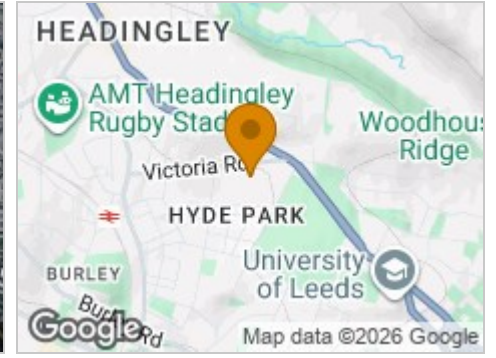
## Road Map



## Hybrid Map



## Terrain Map



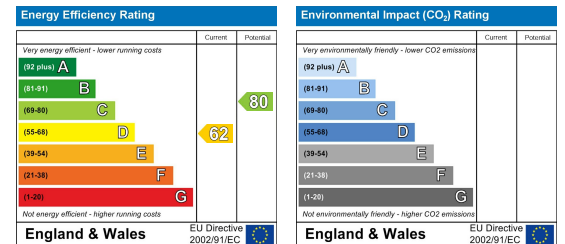
## Floor Plan



## Viewing

Please contact our Chapel Allerton Sales Office on 0113 237 0999 if you wish to arrange a viewing appointment for this property or require further information.

## Energy Efficiency Graph



These particulars, whilst believed to be accurate are set out as a general outline only for guidance and do not constitute any part of an offer or contract. Intending purchasers should not rely on them as statements of representation of fact, but must satisfy themselves by inspection or otherwise as to their accuracy. No person in this firm's employment has the authority to make or give any representation or warranty in respect of the property.