

The logo for Symonds & Sampson, featuring the company name in white text on a dark green rectangular background with a thin yellow horizontal line at the bottom.

Symonds  
& Sampson



# Milestone

High Street, Queen Camel, Yeovil, Somerset

# Milestone

High Street  
Queen Camel  
Yeovil  
Somerset BA22 7NH



- Well Presented Bungalow
  - Attractive Gardens
- Extensive Parking & Outbuildings
  - Country Views
  - Tucked Away Location
  - Rare Opportunity

Guide Price **£395,000**

Freehold

Yeovil Sales  
01935 423526  
[yeovil@symondsandsampson.co.uk](mailto:yeovil@symondsandsampson.co.uk)



## THE DWELLING

A spacious and well-presented detached bungalow benefitting from UPVC double glazing, oil central heating and coved ceilings.

This property was totally modernised three years ago after being the victim of a flash flood, which affected many homes in the locality.

## ACCOMMODATION

Storm porch with a UPVC double-glazed entrance door to the reception hall, having floor tiling with a hatch to the roof space and a double cloaks cupboard.

The sitting room is a good size, with two windows to the front, an attractive wood burner, floor tiling, and French doors leading to the dining room again, with floor tiling and French doors leading to the rear.

The kitchen is a good-sized room with timber-effect worktops with cream doors and stainless steel door furniture, and benefits from a two oven stone range with a stainless steel/glass hood and dishwasher. There is a good range of base units with drawers and cupboards under, wall cupboards and wall tiling.

Off here is the utility room with a door to the rear and an airing cupboard. There is also a cloakroom with a white suite and a very useful study/workshop, which is dual aspect, and was historically the garage.

There are two double bedrooms with an en suite shower room to the master and a family bathroom with a white suite and extensive wall tiling.

## OUTSIDE

To the front is parking for a number of vehicles and two useful workshops, whilst to the rear, the garden is a real feature, being laid to lawn having two patios, mature trees, an oil tank, fruit trees and backing onto the River Cam.

## SITUATION

Located in the sought-after village of Queen Camel, offering a thriving community with a church, primary school, shop, and pub, and lies just seven miles north of Yeovil.

A wide range of day-to-day amenities can be found in the nearby towns of Yeovil and Wincanton, including supermarkets, leisure facilities, and healthcare. The area is particularly well served for education, with highly regarded local primary schools as well as excellent secondary and independent options, including Sherborne School, Sherborne Girls, Hazelgrove, and Millfield.

The historic market town of Sherborne is close by, famed for its abbey, castle and characterful architecture. It offers excellent schools, independent shops, cafés and restaurants.

Queen Camel is surrounded by unspoilt countryside, yet enjoys excellent connectivity via the A303. Mainline rail links are available from Sherborne to London Waterloo and from Castle Cary to London Paddington, making the location ideal for both family life and commuting.

## DIRECTIONS

What 3 words: ///sidelined.formless.given

## SERVICES

Mains water, electricity and drainage. Oil-fired central heating.

Broadband - Ultrafast broadband is available.

Mobile signal/coverage - There is mobile coverage in the area. Please refer to Ofcom's website for more details.

## MATERIAL INFORMATION

Flood Risk - High. Our client had advised us that this property was subject to a flash flood 3 years ago, which affected a number of properties in the vicinity that had never been flooded before.

Council Tax Band: D

Rights of Easements: The electric board has the right of way to access the substation.

The property lies in a conservation area.





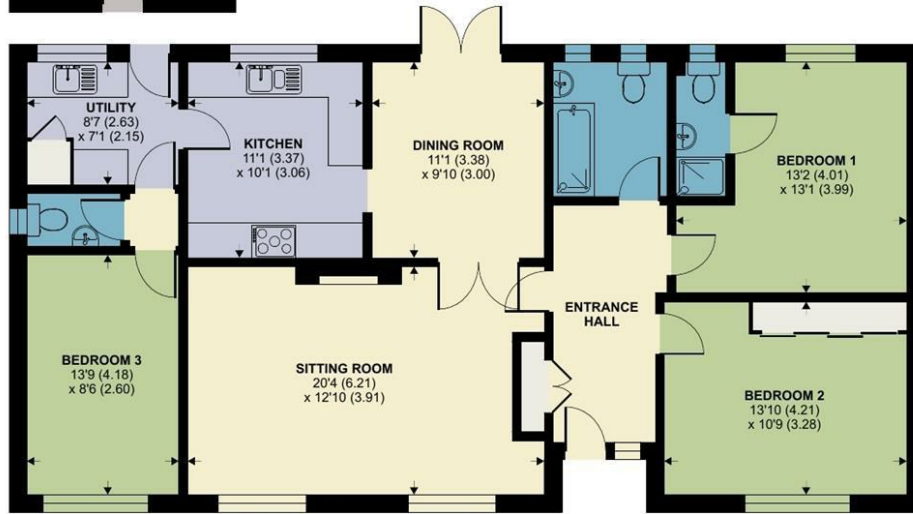
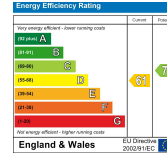
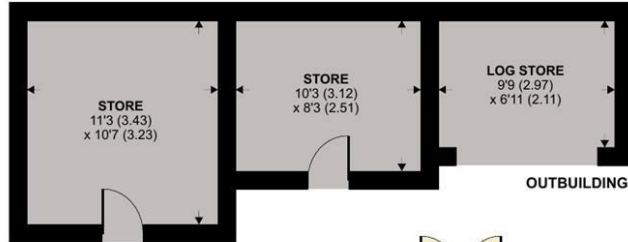
# High Street, Queen Camel, Yeovil

Approximate Area = 1216 sq ft / 113 sq m

Outbuilding = 284 sq ft / 26.4 sq m

Total = 1500 sq ft / 139.4 sq m

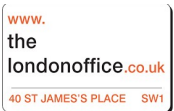
For identification only - Not to scale



Floor plan produced in accordance with RICS Property Measurement 2nd Edition, Incorporating International Property Measurement Standards (IPMS2 Residential). © nichecom 2026. Produced for Symonds & Sampson. REF: 1448898



YEO/JS/21.04.2026



01935 423526

yeovil@symondsandsampson.co.uk  
Symonds & Sampson LLP  
2, Court Ash,  
Yeovil, Somerset BA20 1HG



Important Notice: Symonds & Sampson LLP and their Clients give notice that: 1. They have no authority to make or give any representations or warranties in relation to the property. These particulars do not form part of any offer or contract and must not be relied upon as statements or representations of fact. 2. Any areas, measurements or distances are approximate. The text, photographs and plans are for guidance only and are not necessarily comprehensive. It should not be assumed that the properties have all necessary planning, building regulation or other consents and Symonds and Sampson LLP have not tested any services, equipment of facilities. 3. We have not made any investigation into the existence or otherwise of any issues concerning pollution of the land, air or water contamination and the purchaser is responsible for making his/her own enquiries in this regard. 4. The property is sold subject to and with the benefit of all existing wayleaves, easements and rights of way whether public or private, specifically mentioned or not. The vendors shall not be required to define any such rights, privileges or advantages.

**SALES | LETTINGS | AUCTIONS | FARMS & LAND | COMMERCIAL | NEW HOMES | PLANNING & DEVELOPMENT**