

---

---

# Woodborough Road

LONDON SW15

---

---

## This is a truly unique opportunity to acquire one of the area's finest homes.

Set on one of Putney's most prestigious tree-lined roads, this exceptional detached home offers over 6,000 sq ft of elegantly arranged, naturally constructed, period accommodation. Built with outstanding craftsmanship and fine detailing, it is an exceptionally handsome property and a rare opportunity in the London property market. Backing directly onto The Pleasance and occupying a generous plot, this magnificent residence combines classical charm with substantial living space, making it a truly outstanding family home.

Presented in a timeless and traditional style, the property retains many original period features and remains largely unaltered in layout, owing to the impressive scale and light-filled nature of each room. The house offers superb proportions throughout and includes a striking entrance hall, three expansive formal and informal reception rooms with bay and feature windows, a stunning kitchen overlooking the rear garden, a utility room and a WC.





The upper floors offer six to seven generous double bedrooms, a dressing room and three well-appointed bathrooms. Each space enjoys excellent natural light and a sense of volume throughout.

Further benefits include a cellar, a garage and a carriage driveway.

To the rear, the beautifully landscaped south-west facing garden offers a private and mature retreat, with a generous lawn, patio and established trees creating an idyllic setting for family life and entertaining.

Cherished by the same family since 2002, this is a home of genuine warmth and character, offering exceptional potential to create a forever family residence.

### Location

Woodborough Road is ideally positioned for access to Putney Heath, Barnes Common and the Roehampton Club. It is also well placed for a range of outstanding state and independent schools. Excellent transport links are available nearby, including Barnes and Putney mainline stations, as well as East Putney Underground (District Line). The boutique shops, cafés, and restaurants of Barnes High Street and Upper Richmond Road are also within easy reach.

















- A truly unique opportunity to acquire one of the area's finest homes
- Over 6,000 sq ft of naturally constructed, period accommodation
- Prestigious west Putney location backing directly onto The Pleasance
- Elegant reception rooms with original features and bay windows
- 6–7 spacious double bedrooms, 3 bathrooms & dressing room
- South-west facing garden with lawn, patio & mature trees
- Carriage driveway, garage and cellar

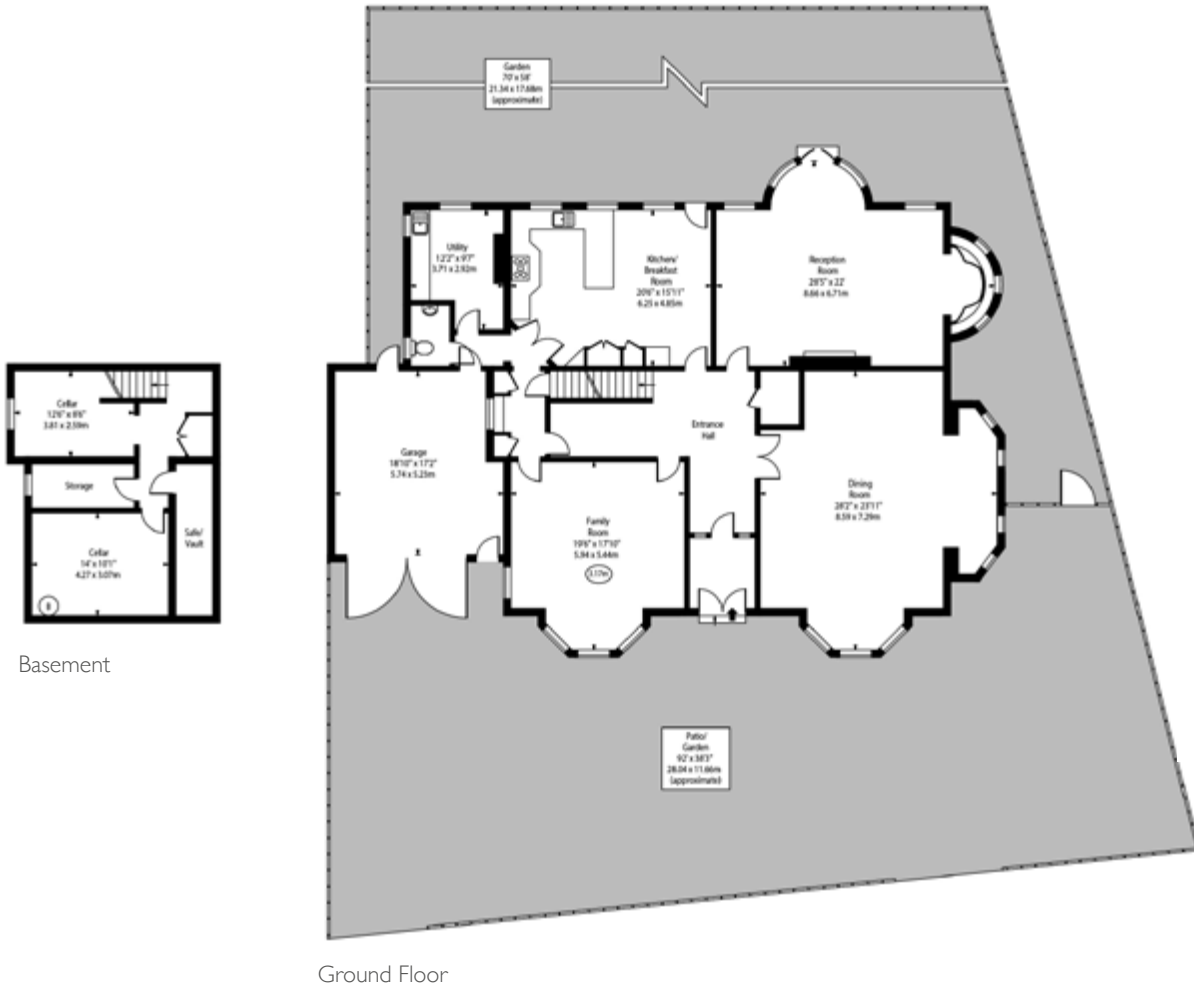
## Terms

Freehold

£6,950,000



Approximate Gross Internal Area  
547.18 sq.m. (5,890 sq.ft.)  
Approx. Floor Area Including Restricted Heights 568.55sq.m.  
(6,120 sq.ft.) including Eaves Storage



Xavier Marqués-Wicks MNAEA MARLA  
Director and Head of Prime Sales - South West London & Surrey  
xavier.marques-wicks@chestertons.co.uk  
Direct: +44 (0) 20 3675 8866  
Mobile: +44 (0)7940 067 480

