



MILFORD HOUSE, WC2R

£5,200 pcm

A well presented one bedroom apartment situated in the prestigious Milford House, 190 Strand by St. Edward. Featuring open-plan reception, integrated kitchen & smart home tech. World class spa and pool.

- Ground Floor Apartment
- Integrated Kitchen
- Marbled Bathroom Suite
- 24 Hour Concierge
- Gym, Swimming Pool and Spa
- Resident Cinema

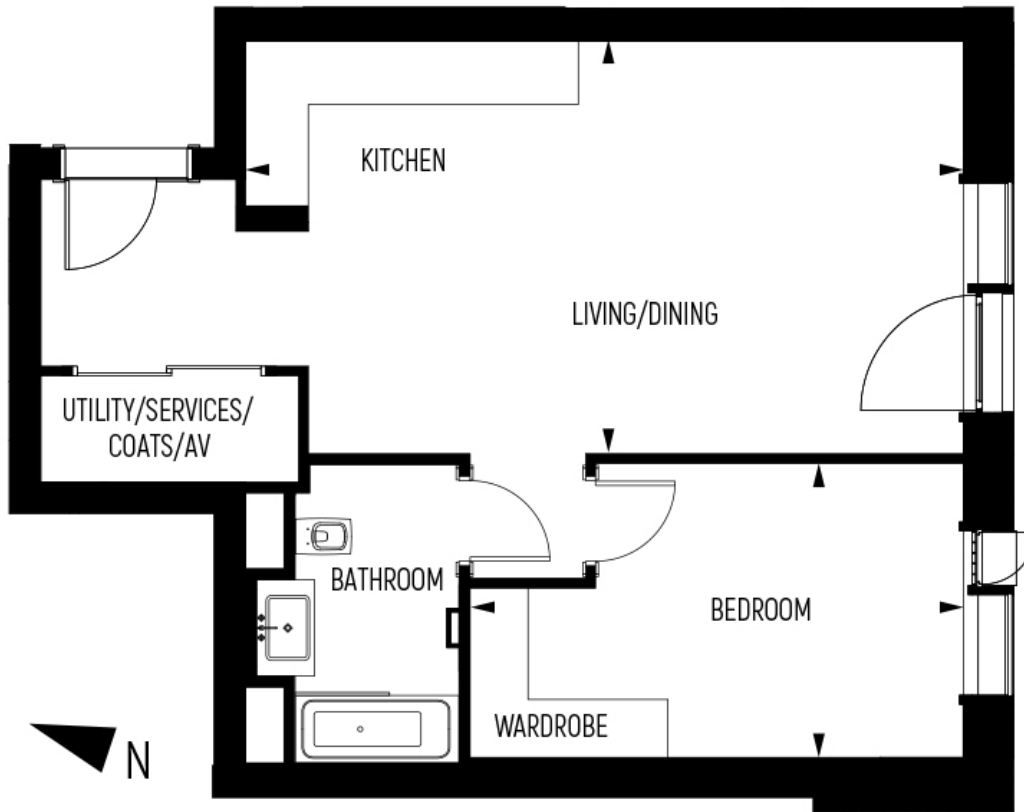


ABOUT THE HOME

Prime WC2R location, steps from London's finest theatres, restaurants and shops. Flanked by Somerset House, the Courtauld Gallery and the Thames. Superb transport links via Underground, bus, cab and cycle routes, connecting you to the whole capital.







Living/Dining/Kitchen	24' 5" x 14' 1"	7440mm x 4280mm
Bedroom	16' 9" x 10' 10"	5110mm x 3050mm
Total area	667 sq ft	62 sq m

LiFE RESIDENTIAL

11 Flagstaff House, London,
SW8 2LZ
Sales: 020 7476 1408
Lettings: 020 7582 7989

Energy Rating: . We aim to make our particulars both accurate and reliable. However they are not guaranteed; nor do they form part of an offer or contract. If you require clarification on any points then please contact us, especially if you're traveling some distance to view. Please note that appliances and heating systems have not been tested and therefore no warranties can be given as to their good working order.