



## Sussex Gardens, W2 £1,000,000

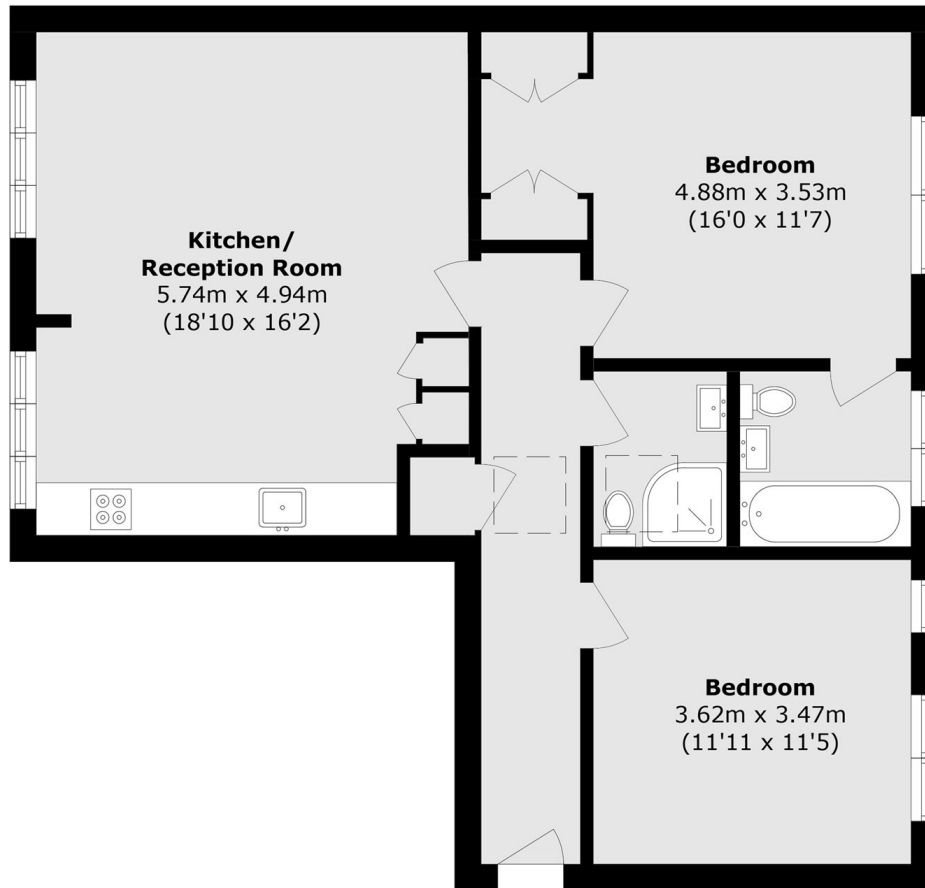
A spacious two double bedroom, two bathroom apartment located on the top floor with a lift in a Victorian period conversion. The property has a large open plan kitchen and reception, perfect for entertaining. The principal bedroom features a recently renovated en suite bathroom and walk-in wardrobe.

Sussex Gardens is on the doorstep of Hyde Park, with easy access to Lancaster Gate and Paddington Station for the Heathrow Express. Locally there's plenty of local shops and restaurants to choose from.

### Features

- Two Bedrooms
- Two Bathrooms
- Lift
- Walk-In Wardrobe
- Hyde Park
- Share Of Freehold

# Sussex Gardens, London, W2



Total area (approx.): 75.6 sq. m (813.7 sq. ft)