



Grove Close, KT1

£415,000

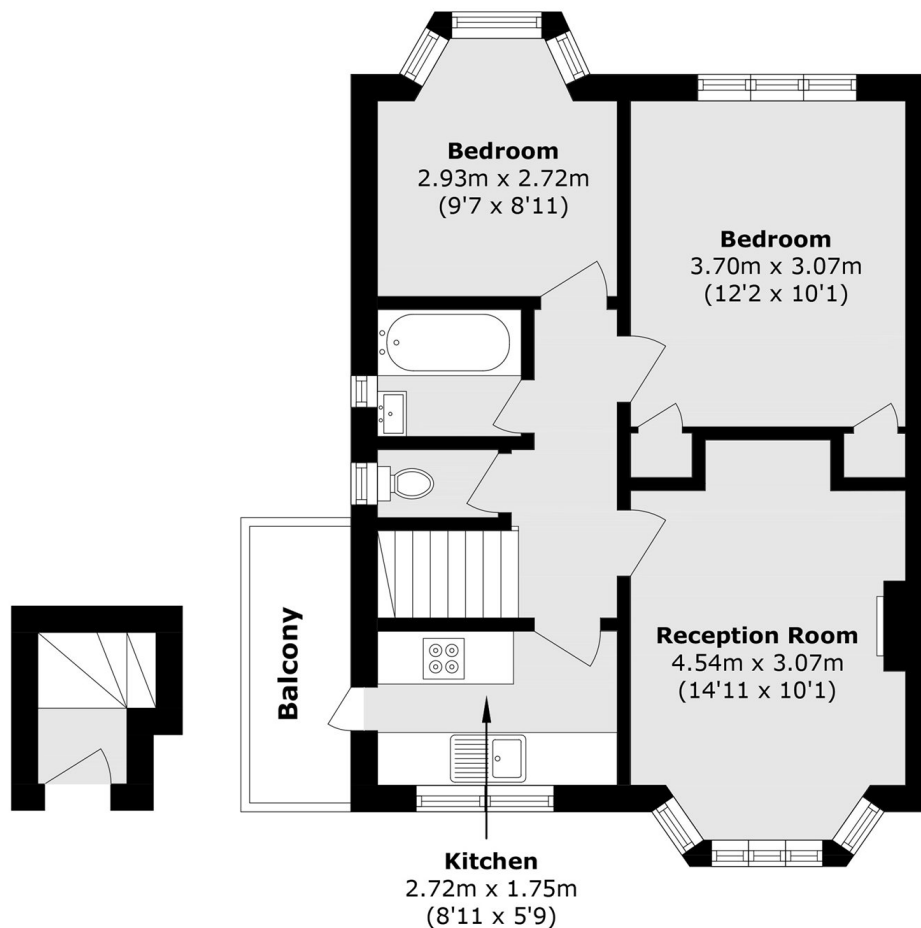
A well presented, two double bedroom first floor maisonette offered for sale with no onward chain. The property provides bright and spacious accommodation throughout, featuring an attractive bay-fronted reception room and a bathroom with a separate WC. A standout feature is the generous private garden, complete with both lawn and patio areas, ideal for outdoor entertaining.

Grove Close is ideally located in a quiet Cul-de-Sac just over half a mile from the vibrant Kingston town centre and the scenic River Thames. For commuters, Surbiton Station, offering a fast link into Central London, is less than a mile away.

Features

- Two Double Bedrooms
- 1st Floor Maisonette
- Large Private Garden
- No Onward Chain
- Well Presented
- New Lease On Completion

Grove Close, Kingston Upon Thames, KT1



Ground Floor

First Floor

Total area (approx.): 50.7 sq. m (545.7 sq. ft)

Balcony area (approx.): 3.6 sq. m (38.7 sq. ft)