



WARE & CO
estate and letting agents

23 Mountway Road, Bishops Hull - TA1 5LT
£330,000

23 Mountway Road

Bishops Hull, Taunton

- Spacious three bedroom semi-detached home
- Elevated plot with attractive outlook
- Off-road parking for up to three vehicles
- Two reception rooms offering flexible living space
- Generous entrance hall with stairs to first floor
- Kitchen with access to the rear garden
- Three well-proportioned bedrooms
- Enclosed rear garden with potential
- Located within Castle School catchment area
- Walking distance to Musgrove Park Hospital

TOTAL FLOOR AREA 90 sq.m.

TENURE Freehold

COUNCIL TAX Somerset Council Tax Band C.
Charges payable for 2026/27 - £2,156.67.

SERVICES Main services of gas, electricity, water and drainage are connected. Broadband speeds of upto 1800 mbps and good mobile signal across the four main networks (Source: Ofcom)

EPC Energy Efficiency Rating: D





A spacious and well-positioned three bedroom semi-detached home, occupying an elevated plot in the highly sought-after village of Bishops Hull. Offering generous living accommodation, front and rear gardens, and off-road parking for up to three vehicles, this property is ideally suited to families and buyers seeking convenience and potential.

Located within the ever-popular Castle School catchment area and within easy walking distance of Musgrove Park Hospital, this home is perfectly placed for both education and employment needs. Early interest is strongly anticipated.

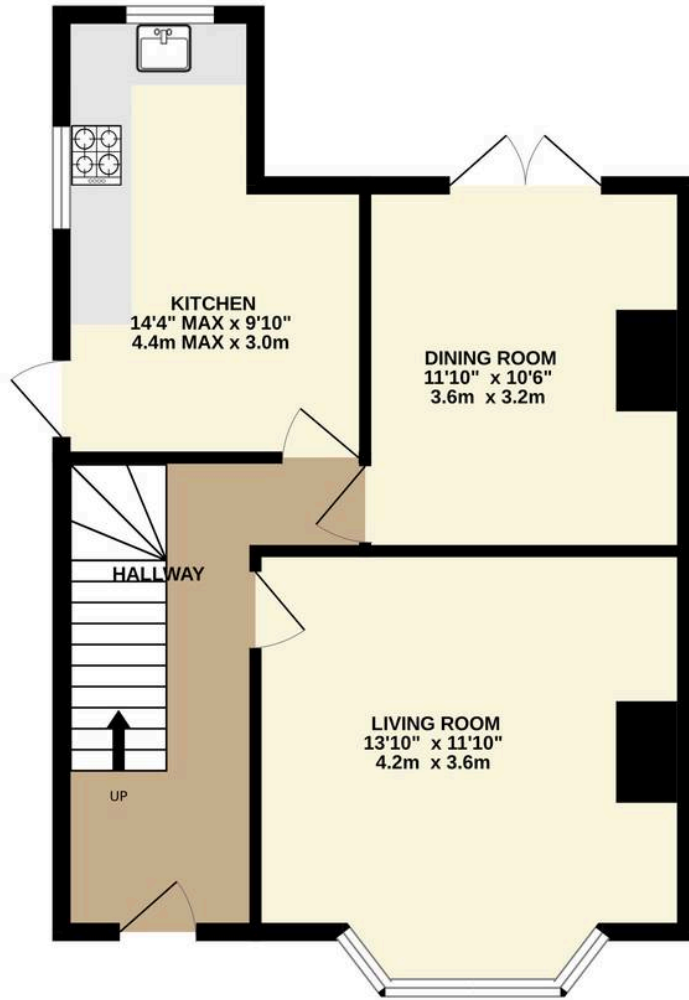
The property is entered via a welcoming and spacious entrance hall, providing access to the principal ground floor rooms and with stairs rising to the first floor. To the front, the living room enjoys a pleasant outlook and ample natural light, creating a comfortable and inviting space. A second reception room, ideal as a dining room or family room, offers flexibility for modern living. The kitchen is positioned to the rear and provides direct access to the garden, with scope for updating or extension (subject to necessary permissions). To the first floor, there are three good sized bedrooms, all well-proportioned and served by a family bathroom fitted with a three-piece suite.

The property benefits from an elevated position, set back from the road with steps rising from the footpath to a front garden and entrance door. The rear garden provides a private outdoor space, with a lawned area, seating area under a timber pergola and gated access to the off road parking space to the rear for upto three cars.

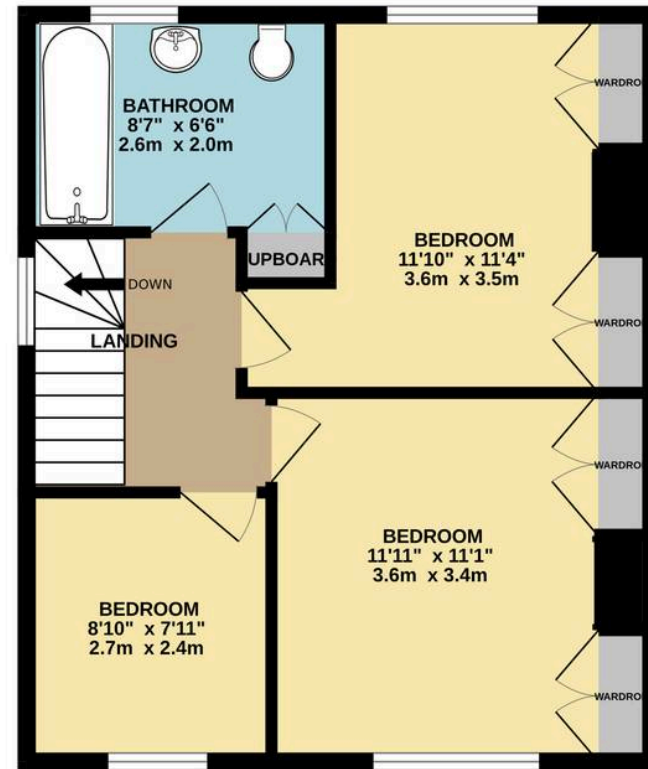
Bishops Hull is a highly regarded residential area on the western side of Taunton, particularly popular with families due to its proximity to well-regarded schools, including The Castle School. Local amenities are within easy reach, while Taunton town centre provides a comprehensive range of shopping, dining, and leisure facilities. Musgrove Park Hospital is conveniently located within walking distance, making this an ideal location for healthcare professionals. Excellent transport links are available, with easy access to the M5 motorway and Taunton railway station offering regular services to London Paddington.



GROUND FLOOR
521 sq.ft. (48.4 sq.m.) approx.



1ST FLOOR
476 sq.ft. (44.2 sq.m.) approx.



TOTAL FLOOR AREA : 997 sq.ft. (92.6 sq.m.) approx.

Whilst every attempt has been made to ensure the accuracy of the floorplan contained here, measurements of doors, windows, rooms and any other items are approximate and no responsibility is taken for any error, omission or mis-statement. This plan is for illustrative purposes only and should be used as such by any prospective purchaser. The services, systems and appliances shown have not been tested and no guarantee as to their operability or efficiency can be given.
Made with Metropix ©2026



Ware & Co

Ware & Co, 53 Bridge Street - TA1 1TP

01823259604 • info@wareandco.com • www.wareandco.com

