



Maldon Road | Tiptree | CO5 0PH



JOHN ALEXANDER
ESTATE AGENTS

OVERVIEW

A refined and spacious six-bedroom residence set within the charming village of Tiptree, offering an appealing balance of modern comfort and timeless character. Thoughtfully arranged across a generous footprint, the home features three elegant reception rooms, three well-designed bathrooms, and a double garage, all approached via a wide gravel driveway with parking for several vehicles.

The interior is beautifully appointed throughout, combining high-quality finishes with a warm and inviting atmosphere ideal for family living. To the rear, a mature garden provides an exceptional outdoor setting, landscaped with established planting and multiple seating areas that create a peaceful and versatile retreat.

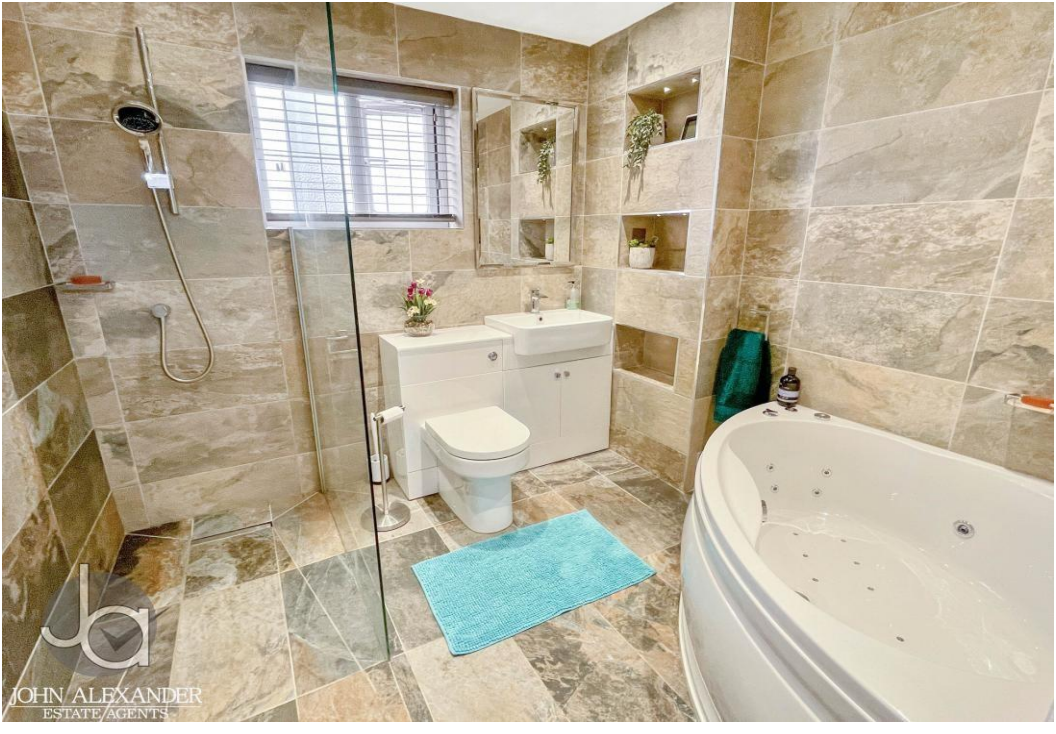
Enjoying a tranquil village location with convenient access to local amenities and transport links, this impressive property presents a wonderful opportunity to secure a distinguished and welcoming home. Contact us today to arrange a viewing.







JA
JOHN ALEXANDER
ESTATE AGENTS



JA
JOHN ALEXANDER
ESTATE AGENTS



JA
JOHN ALEXANDER
ESTATE AGENTS



JA
JOHN ALEXANDER
ESTATE AGENTS

STEP INSIDE



Stepping through the front door, you are welcomed into a bright entrance hall with an understairs cupboard that provides useful storage and houses the alarm system. To the front of the property sits a well-sized study measuring 9'9" x 10'5", ideal for home working or a quiet retreat.

Continuing along the hallway, you arrive at the spacious living room, a warm and inviting space of 17'5" x 13'8", centred around a log burner that creates a cosy focal point. French doors at the rear of the room open directly onto the garden, allowing natural light to flood in and providing a seamless connection to the outdoor space.

At the rear of the house, the kitchen/diner/family room unfolds into a superb multi-purpose living space measuring 18'3" x 21'3". Designed with both style and practicality in mind, the room combines generous proportions with high-quality finishes. Granite worktops frame the kitchen area, where a five-ring hob with a contemporary extractor takes centre stage, complemented by striking cabinetry that pairs warm wood-fronted units with light blue accents housing the integrated oven and microwave. Two sink units with a built-in water softener enhance everyday convenience, while dedicated spaces for a washing machine, dishwasher, and tumble dryer keep the layout efficient and uncluttered. A breakfast bar creates a natural gathering point for casual meals or conversation, making the space equally suited to relaxed family living and entertaining. The dining area sits beyond this, offering ample room for a full-sized table and opening through double French doors to the garden, allowing natural light to pour in and creating a seamless connection between indoor and outdoor living.



Heading upstairs, the first-floor landing includes an airing cupboard and leads to four bedrooms. Bedroom One (11'6" x 10'2") benefits from mirrored fitted wardrobes and a contemporary, fully tiled ensuite wet room featuring underfloor heating. Bedroom Two (13'4" x 11'2") offers generous proportions, while Bedroom Three (7'3" x 9'8") and Bedroom Four/Office (13'3" x 7'10") provide excellent flexibility for family, guests, or additional workspace. The family bathroom on this floor features a spa bath, walk in shower, WC, and washbasin, creating a relaxing and well-equipped space.



A further staircase rises to the second floor, where two additional bedrooms await. Bedroom Five measures approximately 4.75m x 3.00m (15'5" x 10'10") and enjoys natural light from a Velux window. The principal bedroom is of equal size at around 4.75m x 3.00m (15'5" x 10'10"), also benefitting from a Velux window, and features its own generous ensuite-complete with two sinks, one set within a vanity unit, alongside a WC and bidet. This master suite additionally includes a walk-in wardrobe. Both bedrooms are framed by large windows that look out onto the garden.

STEP OUTSIDE

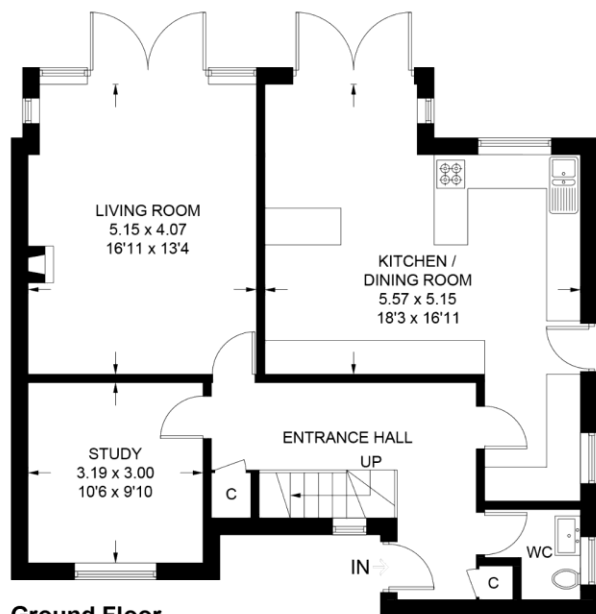
Outside, the property is approached via a gravel driveway leading to off street parking for several cars positioned directly in front of the double garage. The garage features twin up and over doors, a pull-down loft ladder giving access to additional storage space above, and a courtesy door opening to the side pathway. This pathway continues around the rear garden. The private and not overlooked garden is beautifully established with mature flowers and shrubs, a charming pond with a water feature, and a large patio area that rises to a pathway and lawn. A further patio area provides additional seating options, and two sheds offer excellent outdoor storage.



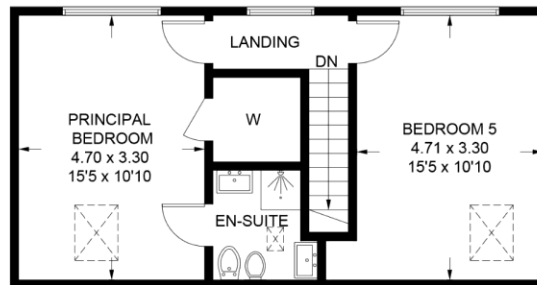
JOHN ALEXANDER
ESTATE AGENTS

Maldon Road

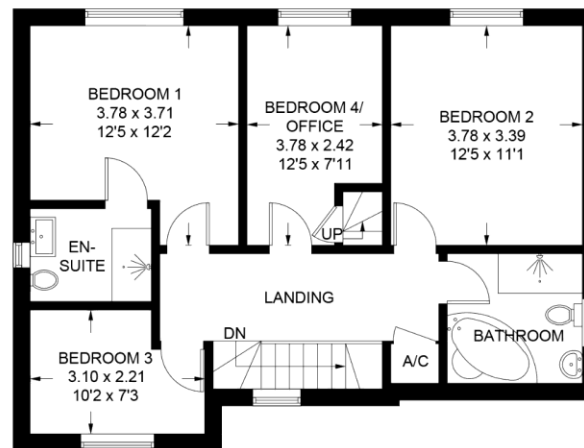
Approximate Gross Internal Area = 188.7 sq m / 2031 sq ft



Ground Floor
79.7 sq m / 858 sq ft



Second Floor
43.7 sq m / 470 sq ft



First Floor
65.3 sq m / 703 sq ft

Illustration for identification purposes only,
measurements are approximate, not to scale.

Follow John Alexander on



John Alexander Tiptree
Tel: +44 01621 814334
info@john-alexander.co.uk
1 Church Road, Tiptree, Colchester, Essex, CO5 0LG



JOHN ALEXANDER
ESTATE AGENTS