

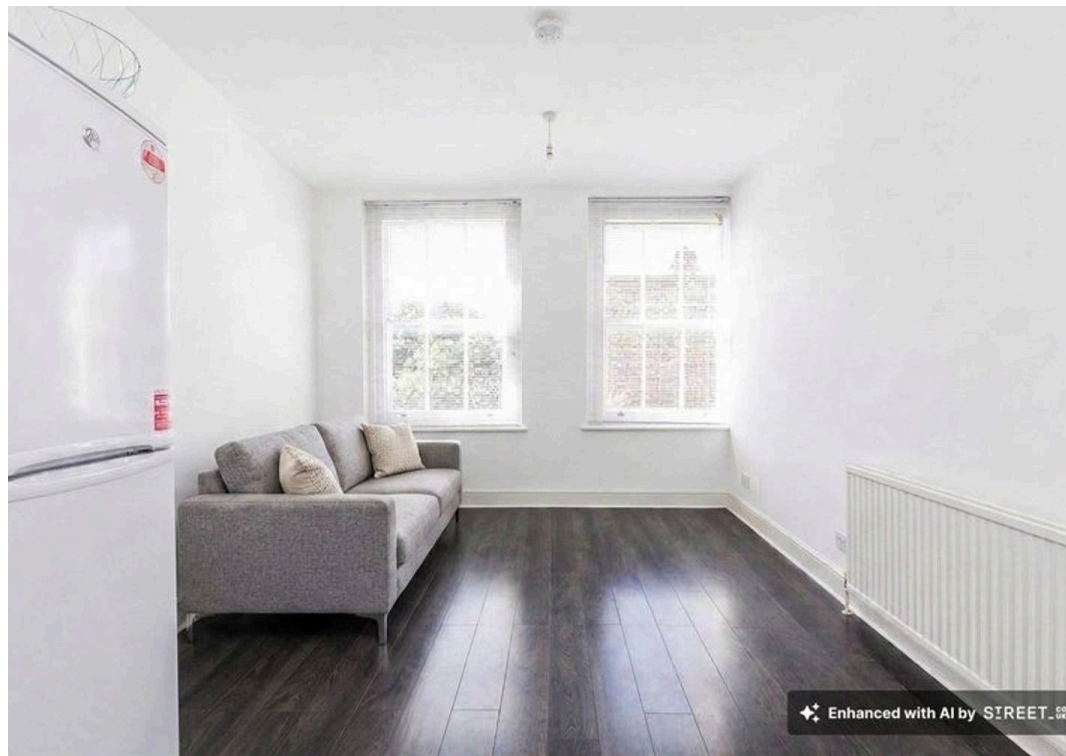


Nevern Road, Earls Court, SW5.
£2,000 pcm

Nevern Road, Earls Court, SW5.

****VIRTUALLY STAGED**** Black Katz are proud to offer this centrally located one bedroom flat located on a beautiful tree lined street seconds away from Earls Court tube station (District and Piccadilly Lines). Set within lovely period building, the property boasts ample living space with fully fitted open plan kitchen, good size double bedroom and a neutrally decorated tiled bathroom. There are high ceilings and original period features which add to the character of this property. You are moments away from excellent transport links as well as a wide array of trendy bars, café's and restaurants along Earls Court Road. The open spaces of Hyde Park and other famous land marks are within a 20 minute walk.







Black Katz

22 West Hampstead Mews, London - NW6 3BB

02073285000 • Thomas@blackkatz.com • blackkatz.com/