



## Albany Road, SE5

£325,000



- Two Bedrooms
- Separate Kitchen
- Allocated Off Street Parking
- Overlooking Burgess Park
- Chain Free
- Second Floor







## ABOUT THE PROPERTY

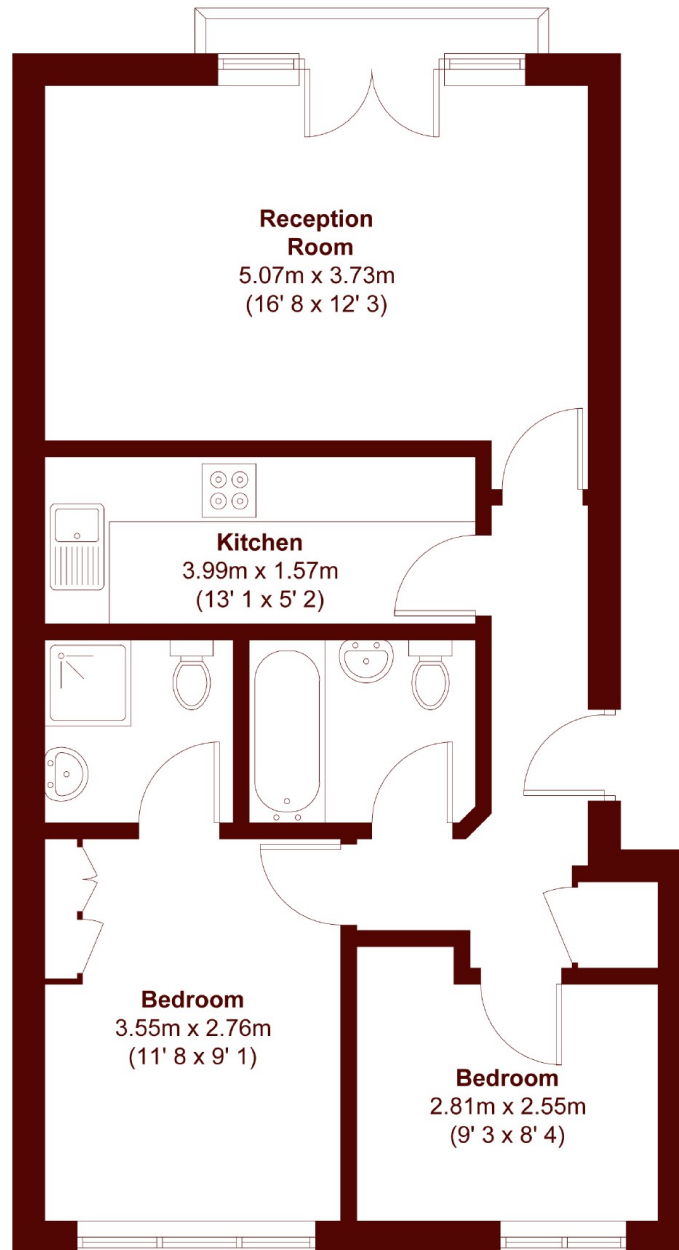
Set on the second floor of a modern development, this bright and well presented two bedroom flat offers spacious and comfortable living in an excellent location. Overlooking Burgess Park, the property boasts a generous reception room with French doors opening onto a Juliet balcony, filling the space with natural light and providing a welcoming setting for relaxation and entertaining. A separate kitchen offers good storage, while the two bedrooms are well proportioned. The property is being offered chain free and has an allocated off-street parking space.



Riddell Court is ideally located just moments from the open green spaces of Burgess Park, while the shops, cafés and amenities of Old Kent Road are within easy reach. This property presents an attractive opportunity for first-time buyers







APPROX. GROSS INTERNAL FLOOR AREA 598 SQFT / 55.6 SQM

## Marsh & Parsons Kennington

295 Kennington Road,  
London, SE11 4QE  
020 7587 1533

We aim to make our particulars both accurate and reliable. However, they are not guaranteed; nor do they form part of an offer or contract. If you require clarification on any points then please contact us, especially if you're traveling some distance to view. Please note that appliances and heating systems have not been tested and therefore no warranties can be given as to their good working order.