



10 Harris Drive

, Bootle, L20 6LG

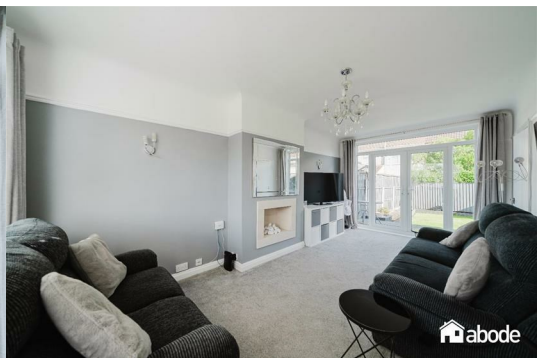
Offers in excess of £200,000



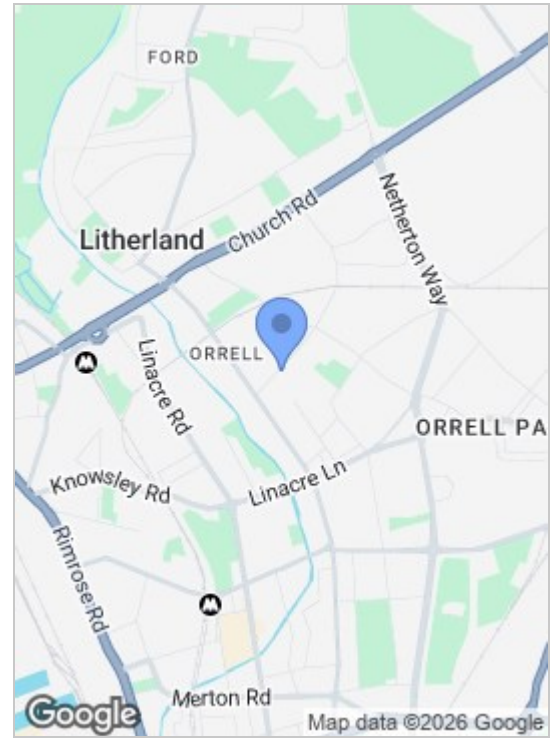
A fantastic opportunity to purchase this modern and beautifully presented three-bedroom semi-detached home, ideally situated on the ever-popular Harris Drive, L20. This superb property occupies a sought-after residential location, within walking distance of highly regarded local schools, a range of shops, everyday amenities, and excellent transport links. Making it perfectly suited to first-time buyers, growing families, and a wide variety of purchasers alike.

The property offers well-planned and contemporary living accommodation throughout. Upon arrival, you are welcomed by a gated driveway providing secure off-road parking, enhancing both convenience and privacy. Internally, the entrance hallway includes a useful storage cupboard, setting the tone for the practical layout that follows.

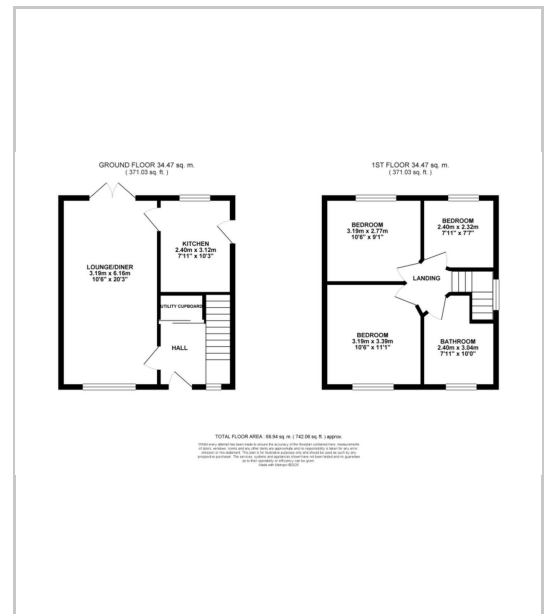
The bright and spacious lounge is flooded with natural light and benefits from patio doors that open directly onto the south facing rear garden, creating an ideal space for both relaxing and entertaining. The kitchen is well-appointed and completes the ground floor.



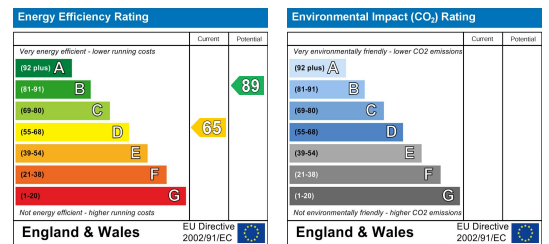
Area Map



Floor Plans



Energy Efficiency Graph



These particulars, whilst believed to be accurate are set out as a general outline only for guidance and do not constitute any part of an offer or contract. Intending purchasers should not rely on them as statements of representation of fact, but must satisfy themselves by inspection or otherwise as to their accuracy. No person in this firm's employment has the authority to make or give any representation or warranty in respect of the property.

82 Coronation Road, Crosby, Liverpool L23 5RH

6 Allerton Road, Mossley Hill, Liverpool, L18 1LN

2 Chapel Lane, Formby, Liverpool, L37 4DU

Tel: 0151 909 3003

Email: crosby@abode-group.co.uk

Web: www.abode-group.co.uk

Tel: 0151 601 3003

Email: allerton@abode-group.co.uk

Web: www.abode-group.co.uk

Tel: 01704 827 402

Email: formby@abode-group.co.uk

Web: www.abode-group.co.uk