



Guide Price
£350,000

Freehold

3x  1x  2x 

**Tonbridge Road,
Wateringbury,
Maidstone, Kent, ME18**

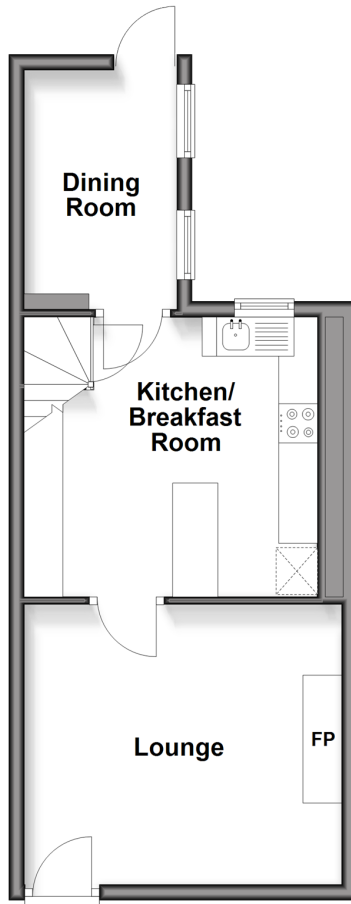
OVER 60?

Secure this property
for up to **59% less!**

Wards
Helping you move forwards

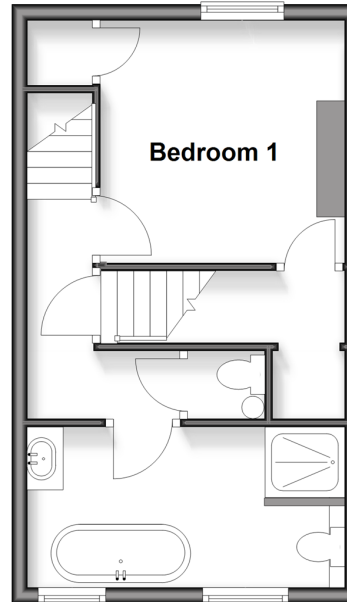
Ground Floor

Approx. 35.9 sq. metres (386.5 sq. feet)



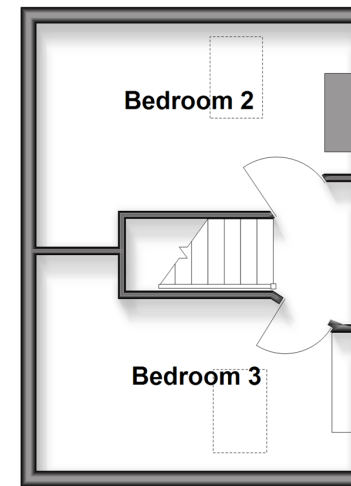
First Floor

Approx. 29.6 sq. metres (319.1 sq. feet)



Second Floor

Approx. 23.5 sq. metres (252.4 sq. feet)



Accommodation

GROUND FLOOR

Lounge: 13'5 x 11'11 (4.09m x 3.63m)

Kitchen/Breakfast Room: 12'6 x 11'7 (3.81m x 3.53m)

Dining Room: 9'8 x 7'6 (2.95m x 2.29m)

FIRST FLOOR

Landing

Bedroom 1: 13'5 x 9'10 (4.09m x 3.00m)

Bathroom

SECOND FLOOR

Bedroom 2: 10'2 x 9'6 (3.10m x 2.90m)

Bedroom 3: 13'4 x 9'6 (4.07m x 2.90m)

OUTSIDE

Front & Rear Garden



Main features

- Upgraded & improved end of terrace house
- Full of period charm
- Situated in the sought after village of Wateringbury
- Perfectly located close to local amenities & local walks
- This property is a must view



Nearest Schools

Primary Schools: Wateringbury C of E Primary 0.7 miles, The Discovery School 0.8 miles, Kings Hill School 1.2 miles

Secondary Schools: The Malling School 2.2 miles, Bower Grove School 2.9 miles, Grange Park School 3.0 miles



Transport Information

Train Stations: Wateringbury 0.3 miles, East Malling 1.9 miles, West Malling 2.1 miles



Address

Tonbridge Road, Wateringbury, Maidstone, Kent, ME18



Directions

For directions to this property please contact us.





Wards
Helping you move forwards

Call Kings Hill Branch 01732 222211 ■ wardsof Kent.co.uk



■ Legal advice should be taken to verify fixtures/fittings, planning, alterations and/or lease details ■ Appliances & services are untested, dimensions are approximate and floor plans are not to scale
■ Through a Homewise Home For Life Plan people aged 60+ can secure this property for up to 59% less, by purchasing a Lifetime Lease

EPC RATING

CURRENT:	POTENTIAL:
D(66)	B(32)

12404100/20260111/SW/****