



30 Manorfield

Ashford, TN23 5YW

Price £187,500

One double bedroom cluster house in the popular Singleton area of Ashford with generous gardens and allocated parking.

The property comprises of sitting room, kitchen, double bedroom and bathroom. There are well maintained side and front gardens with a patio, lawn and summerhouse with an allocated parking space to the front.

The property also benefits from double glazing and gas central heating

- POPULAR SINGLETON AREA
- ONE DOUBLE BEDROOM
- ALLOCATED PARKING
- GENEROUS PRIVATE GARDEN
- GAS CENTRAL HEATING
- DOUBLE GLAZING
- IDEAL FOR INVESTMENT OR FIRST TIME BUYERS

Viewing

Please contact our Ashford Office on 01233 646411 if you wish to arrange a viewing appointment for this property or require further information.



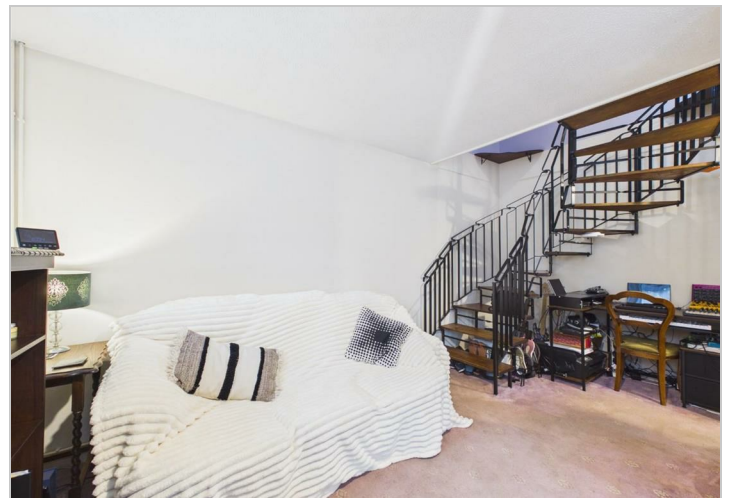
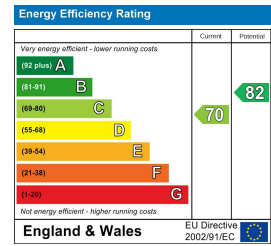
Floor Plan



Area Map



Energy Efficiency Graph



These particulars, whilst believed to be accurate are set out as a general outline only for guidance and do not constitute any part of an offer or contract. Intending purchasers should not rely on them as statements of representation of fact, but must satisfy themselves by inspection or otherwise as to their accuracy. No person in this firm's employment has the authority to make or give any representation or warranty in respect of the property.