



Apartment

Lyndhurst Terrace Hampstead London NW3 5QA

£1,450,000

Council Tax Band: G

FEATURES

- 3 Bedrooms
- Kitchen
- Terrace
- Communal Gardens
- Reception Room
- 2 Bathrooms
- Balcony
- Unreserved Off Street Parking



3



2



1



C



ADN
RESIDENTIAL

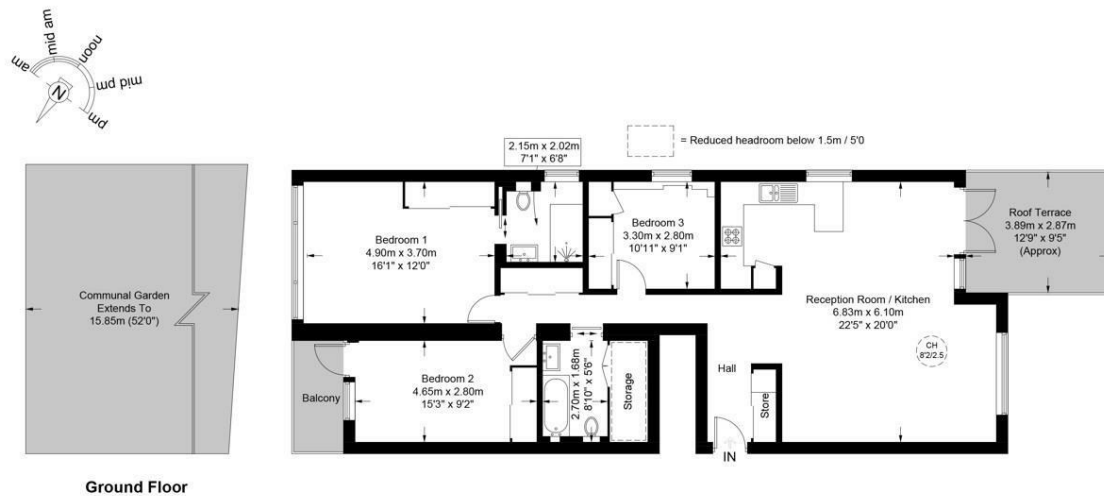


3 Bedroom Apartment located in London

A beautifully presented three double bedroom apartment arranged over the raised ground floor of a popular purpose built block located in Hampstead Village offering over 1200 Sq Ft (111 Sq M) of well planned accommodation. Featuring a bright reception room with French doors onto a private terrace overlooking the communal gardens, principal bedroom with en-suite shower room and good storage, two further double bedrooms (both with fitted cupboards), family bathroom and an additional balcony. additional benefits include, double glazed windows, beautiful communal gardens and unreserved off street parking.

Newmount, NW3

Approximate Gross Internal Area = 1202 sq ft / 111.67 sq m



Energy Efficiency Rating		
	Current	Potential
Very energy efficient - lower running costs		
(92 plus) A		
(81-91) B		81
(69-80) C	73	
(55-68) D		
(39-54) E		
(21-38) F		
(1-20) G		
Not energy efficient - higher running costs		
England & Wales	EU Directive 2002/91/EC	

Call us on

020 7407 5155

info@adnresidential.co.uk

www.adnresidential.co.uk



This plan is for layout guidance only and is not drawn to scale unless stated. All dimensions, including windows, doors, and the Total Gross Internal Area (GIA), are approximate. For precise measurements, please consult a qualified architect or surveyor before making any decisions based on this plan.



Agents Note: Whilst every care has been taken to prepare these particulars, they are for guidance purposes only. All measurements are approximate and are for general guidance purposes only and whilst every care has been taken to ensure their accuracy, they should not be relied upon and potential buyers are advised to recheck the measurements.

