



TK International  
020 7794 8700  
www.t-k.co.uk

Residential Sales  
Residential Lettings  
Property Management

Sales Office:  
9 Heath Street  
Hampstead  
London NW3 6TP  
E: sales@t-k.co.uk

Lettings Office:  
16-18 Heath Street  
Hampstead  
London NW3 6TE  
E: lettings@t-k.co.uk

tk.international  
TK International  
TK International

Est.  
1998



## St. Johns Wood Park St. Johns Wood NW8

Spanning 978 sq ft of bright and laterally arranged accommodation, this spacious modern two bedroom, two bathroom apartment is enviably situated on the top (7th) floor of a well regarded portered blocked in St John's Wood Park, and is offered chain free.

The apartment comprises two generous double bedrooms, immaculate modern bathrooms, plus wonderful entertaining space which includes a galley kitchen and a 22'2" x 14'10" reception/dining area, which provides direct access to a balcony offering enviable views across London.

The apartment enjoys on-site parking on a first come, first served basis, and there is further parking provision for visitors.

Sheringham forms part of the sought after Queensmead Estate and is idyllically located within 0.5 miles from the fashionable boutiques on St John's Wood High Street and St John's Wood Station (Jubilee Line). Swiss Cottage Underground Station (also Jubilee Line) is just moments within 0.3 miles, and the green expanses of both Primrose Hill and Regents Park are located within walking distance.

Please note that CGI furniture has been included in some of the imagery.

£1,100,000

SOLE AGENT

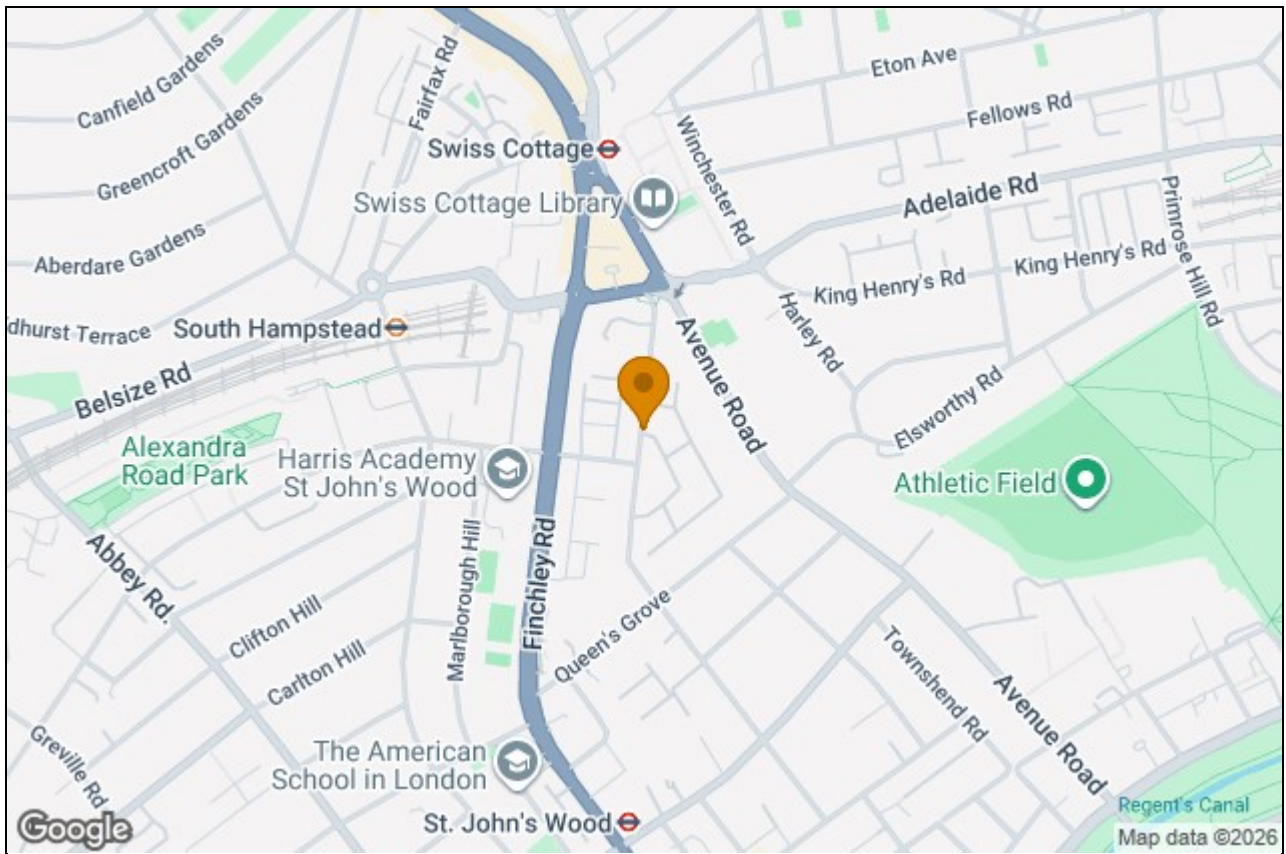
Share of Freehold







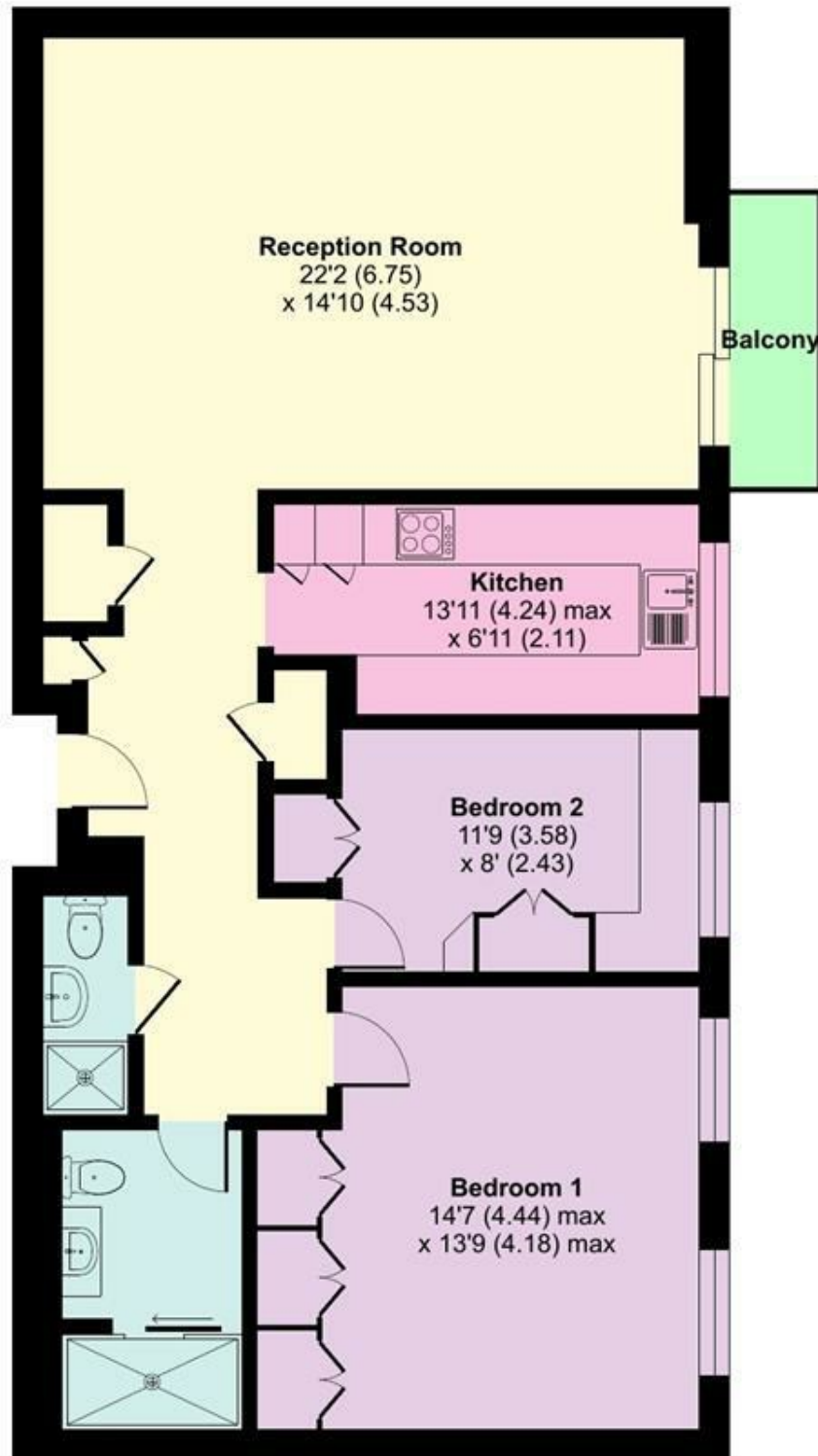






# Sheringham, St. Johns Wood Park, St. Johns Wood, NW8

Approximate Area = 978 sq ft / 90.8 sq m  
For identification only - Not to scale



**SEVENTH FLOOR**

