



The Green, TW2

£2,150 Per calendar month

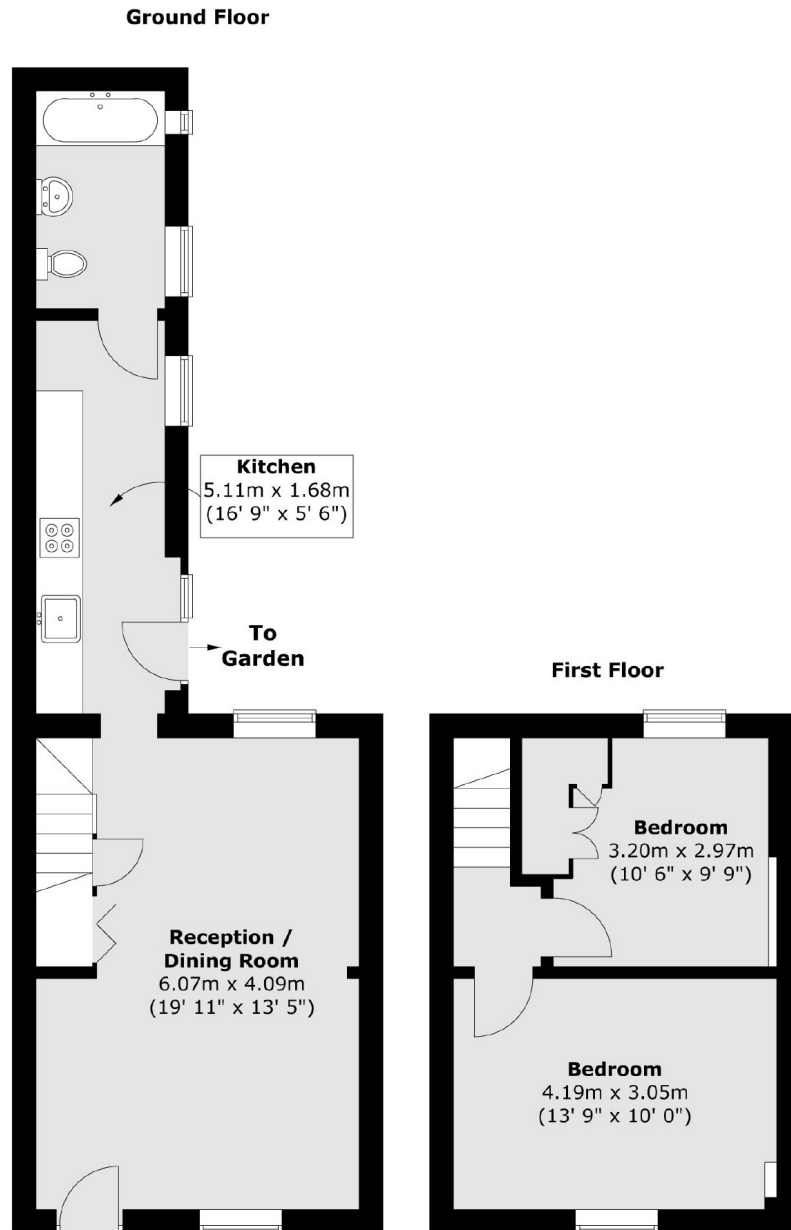
A picture perfect two bedroom cottage, ideally located close to Twickenham Green. Presented in immaculate condition throughout this is the ideal home for a couple or a small family.

The Green is located close to the historical Twickenham Green and boasts great transport links, parks, schools and excellent amenities.

Features

- Two Double Bedrooms
- Moments From The Green
- Large Garden
- Modern Kitchen
- Pet Friendly
- Large Living Area

The Green, Twickenham, TW2



Total area (approx.) : 65.9 sq. m (709 sq. ft)