



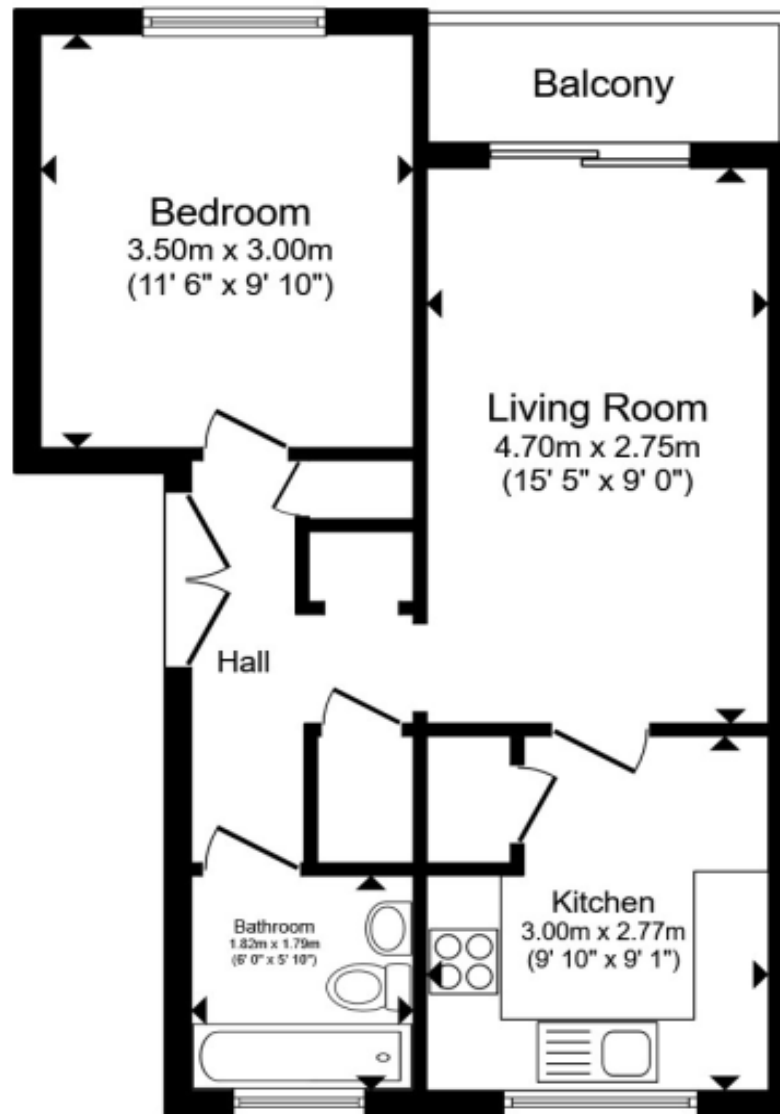
**Fownhope Close, Redditch B98 0LA**

**welcome to**

**Fownhope Close, Redditch**

\*\*\* IMMACULATEDLY PRESENTED \*\*\* ONE BEDROOM APARTMENT \*\*\* GOOD LENGTH LEASE \*\*\* LOW SERVICE CHARGES \*\*\* NO ONWARD CHAIN  
\*\*\* AMPLE COMMUNAL PARKING \*\*\*





Total floor area 42.4 m<sup>2</sup> (457 sq.ft.) approx

This floor plan is for illustrative purposes only. It is not drawn to scale. Any measurements, floor areas (including any total floor area), openings and orientation are approximate. No details are guaranteed, they cannot be relied upon for any purpose and they do not form part of any agreement. No liability is taken for any error, omission or misstatement. A party must rely upon its own inspection(s). Powered by [www.propertybox.io](http://www.propertybox.io)

**Communal Entrance  
Entrance Hallway**

**Living Room**

15' 5" x 9' ( 4.70m x 2.74m )

With double glazed windows to the rear and a central heating radiator

**Kitchen**

9' 10" x 9' 1" ( 3.00m x 2.77m )

With a range of wall and base units, a sink/drainer, electric hob and oven, plumbing for a washing machine/dish washer, double glazed windows to the front and a central heating radiator

**Bedroom One**

11' 6" x 9' 10" ( 3.51m x 3.00m )

With double glazed windows to the rear and a central heating radiator

**Bathroom**

With a w/c, a bath with shower over, double glazed windows to the front and a central heating radiator

**Balcony**

**Agents Note**

The Council Tax Band for this property is A

**Agents Note**

Please note this is non-standard construction



***view this property online*** [shipways.co.uk/Property/RDC110060](http://shipways.co.uk/Property/RDC110060)



welcome to

## Fownhope Close, Redditch

- One Bedroom Apartment
- Immaculately presented throughout
- Ample communal parking
- Low service charges
- Good length lease

Tenure: Leasehold EPC Rating: B

Council Tax Band: A Service Charge: 200.00

Ground Rent: 35.00

This is a Leasehold property with details as follows; Term of Lease 125 years from 24 Jun 1981. Should you require further information please contact the branch. Please Note additional fees could be incurred for items such as Leasehold packs.

# £80,000



Please note the marker reflects the postcode not the actual property

view this property online [shipways.co.uk/Property/RDC110060](https://shipways.co.uk/Property/RDC110060)



Property Ref:  
RDC110060 - 0004

1. MONEY LAUNDERING REGULATIONS Intending purchasers will be asked to produce identification documentation at a later stage and we would ask for your co-operation in order that there is no delay in agreeing the sale. 2. These particulars do not constitute part or all of an offer or contract. 3. The measurements indicated are supplied for guidance only and as such must be considered incorrect. Potential buyers are advised to recheck measurements before committing to any expense. 4. We have not tested any apparatus, equipment, fixtures or services and it is in the buyers interest to check the working condition of any appliances. 5. Where an EPC, or a Home Report (Scotland only) is held for this property, it is available for inspection at the branch by appointment. If you require a printed version of a Home Report, you will need to pay a reasonable production charge reflecting printing and other costs. 6. We are not able to offer an opinion either written or verbal on the content of these reports and this must be obtained from your legal representative. 7. Whilst we take care in preparing these reports, a buyer should ensure that his/her legal representative confirms as soon as possible all matters relating to title including the extent and boundaries of the property and other important matters before exchange of contracts.

Shipways is a trading name of Sequence (UK) Limited which is registered in England and Wales under company number 4268443, Registered Office is Cumbria House, 16-20 Hockliffe Street, Leighton Buzzard, Bedfordshire, LU7 1GN. VAT Registration Number is 500 2481 05.

shipways



01527 65155



Redditch@shipways.co.uk



3 Alcester Street, REDDITCH, Worcestershire,  
B98 8AE



[shipways.co.uk](https://shipways.co.uk)