



Living
made
better

Wordsworth Road
Hampton, TW12 1ER



Guide Price £685,000

Wordsworth Road, Hampton, TW12 1ER

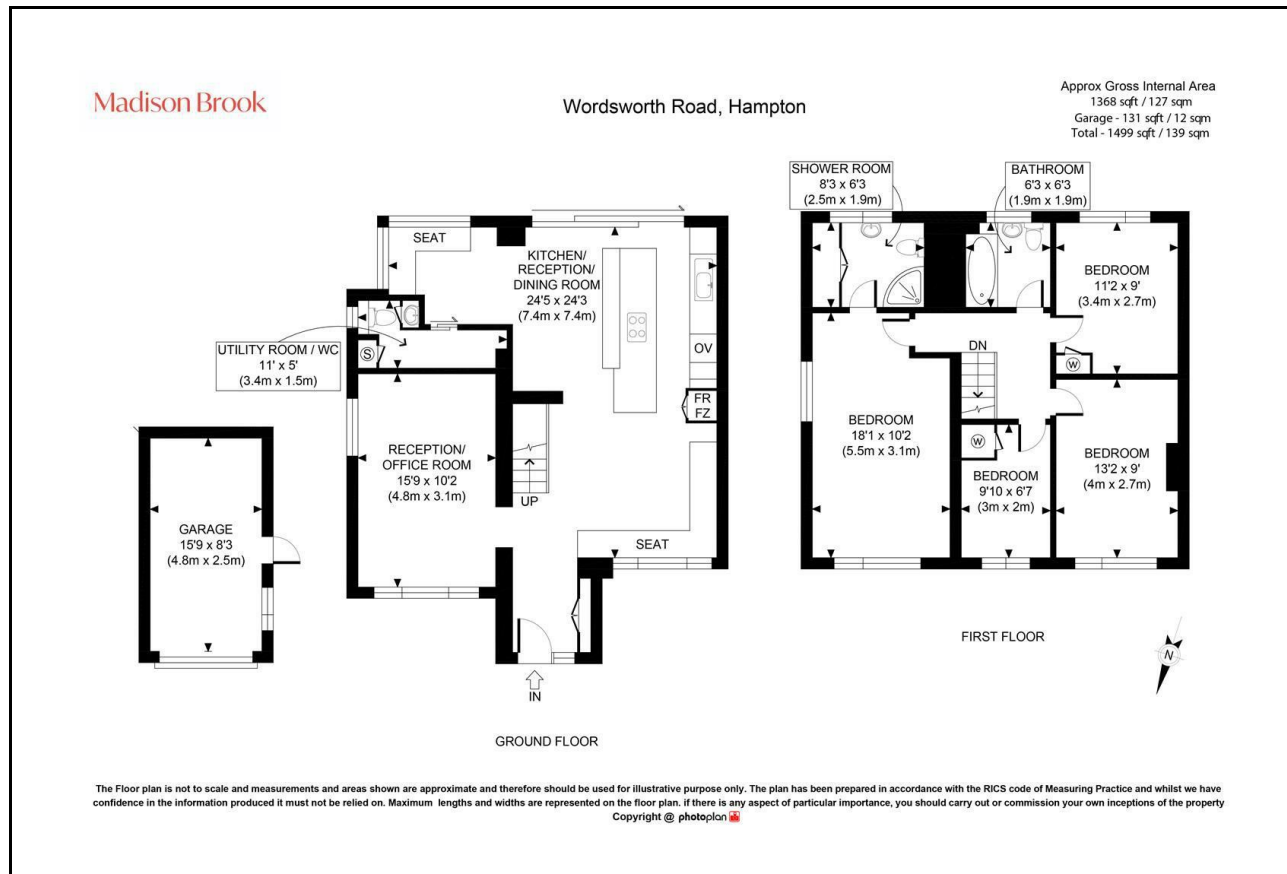
Madison Brook

Property Summary

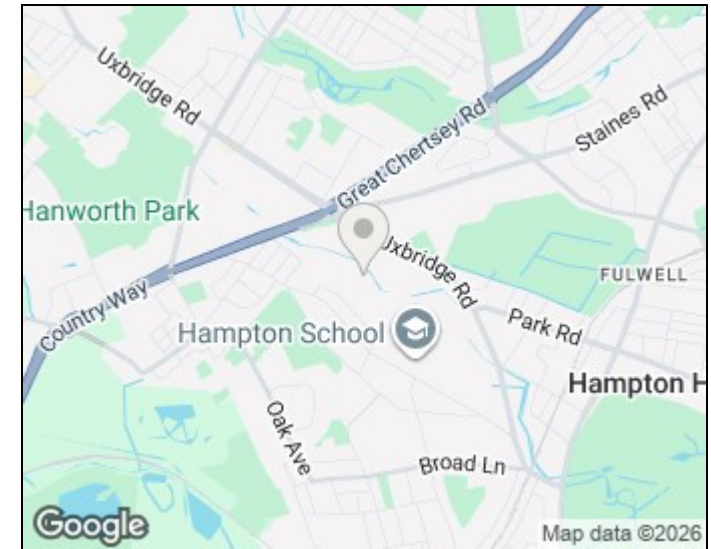
A very spacious four-bedroom family home located on the highly popular Wordsworth Road. The property offers generous and versatile accommodation, featuring a large open-plan kitchen/reception/dining room, a separate reception/office room and a useful utility room with WC. Upstairs are four well-proportioned bedrooms, a family bathroom and an additional shower room.

Further benefits include a garage, driveway parking, EV charging, and attractive front and rear gardens. Ideally positioned close to sought-after schools, local amenities and transport links, this well-presented freehold home is perfectly suited for family living.

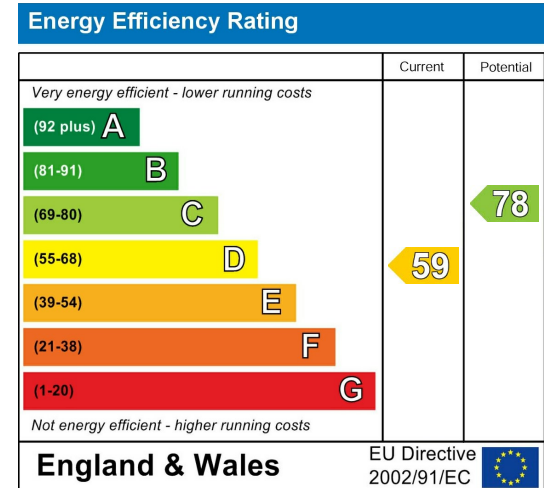
Floorplan



Area Map



Energy Efficiency Graph



103 High Street, Hampton Hill, Hampton, TW12 1NJ

Tel: 020 3946 6700 Email: hamptonhill@madisonbrook.com
<https://madisonbrook.com/>

These particulars, whilst believed to be accurate are set out as a general outline only for guidance and do not constitute any part of an offer or contract. Intending purchasers should not rely on them as statements of representation of fact, but must satisfy themselves by inspection or otherwise as to their accuracy. No person in this firm's employment has the authority to make or give any representation or warranty in respect of the property.