



Cromwell Road, SW7

£692 Per week

A beautifully appointed one-bedroom apartment situated within this highly sought-after development in South Kensington. The accommodation includes an entrance hall, a separate kitchen fitted with integrated appliances, a reception room with French doors opening onto a generous private balcony, a double bedroom with built-in wardrobes, and a family bathroom.

Benefits include wood flooring throughout, a 24-hour porter service, and a prime position close to the David Lloyd gym, Hyde Park, and Gloucester Road Underground Station.

Features

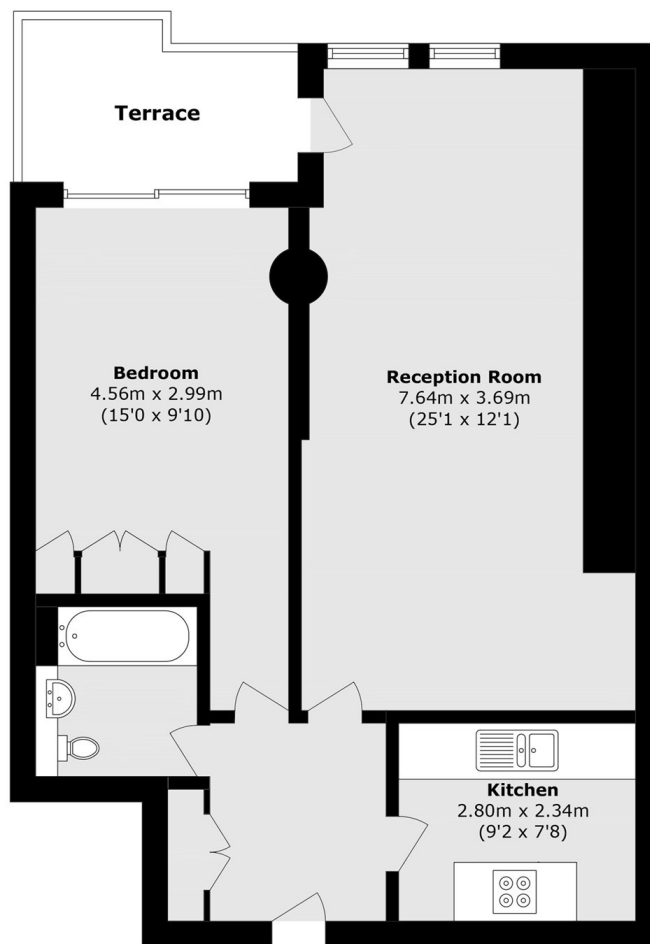
- One Double Bedroom
- Built In Storage
- 24 Hour Porter
- Private Balcony
- Separate Kitchen
- Lift Access



Cromwell Road, SW7



Cromwell Road, London, SW7



Second Floor

Total area (approx.): 63.2 sq. m (680.2 sq. ft)

Terrace area (approx.): 5.8 sq. m (62.4 sq. ft)