



**Guide Price**  
**£300,000**

**Freehold**

3x  1x  1x 

**Buttermere, Faversham,  
Kent, ME13**

**OVER 60?**

Secure this property  
for up to **59% less!**

*Wards*  
Helping you move forwards



## Main features

- Short walk to town centre and mainline train station
- Multi use garden cabin with light and power
- Good sized porch/utility space
- Parking available to the rear of the property
- Modern kitchen/diner

## Accommodation

### GROUND FLOOR

- Entrance Porch
- Entrance Hall
- Kitchen/Diner: 17'6 x 11'4 (5.34m x 3.46m)
- Lounge: 11'8 x 11'5 (3.56m x 3.48m)

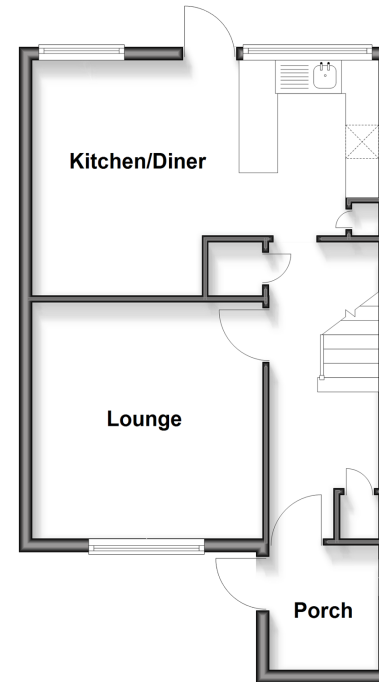
### FIRST FLOOR

- Landing
- Bedroom 1: 13'8 x 8'9 (4.17m x 2.67m)
- Bedroom 2: 9'6 x 8'9 (2.90m x 2.67m)
- Bedroom 3: 8'7 x 6'9 (2.62m x 2.06m)
- Bathroom
- Separate Toilet

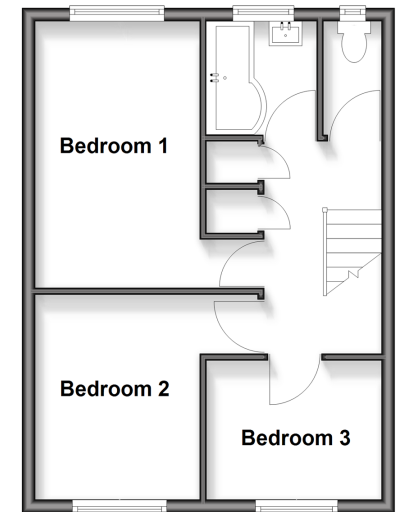
### OUTSIDE

- Front Garden
- Rear Garden
- Garden Cabin

**Ground Floor**  
Approx. 41.0 sq. metres (441.1 sq. feet)



**First Floor**  
Approx. 37.7 sq. metres (406.0 sq. feet)



**Call Faversham - 01795 535517 ■ [wardsof Kent.co.uk](http://wardsof Kent.co.uk)**

- Legal advice should be taken to verify fixtures/fittings, planning, alterations and/or lease details
- Appliances & services are untested, dimensions are approximate and floor plans are not to scale
- Through a Homewise Home For Life Plan people aged 60+ can secure this property for up to 50% less, by purchasing a Lifetime Lease



10832543/20260102/JB/HR