



Elm Road, KT2

£850,000

An attractive and beautifully renovated period family home offering two generous double bedrooms. The property has been thoughtfully updated throughout while retaining much of its original charm and character. Both bedrooms benefit from en suite bathrooms, complemented by a third bathroom conveniently located on the ground floor.

The house is conveniently located on Elm Road in North Kingston. Very popular with families due to its close proximity to St Lukes school and just a short 500 yard stroll to Kingston Station.

Features

- Detached Family Home
- Two En Suite Bedrooms
- Ground Floor Bathroom
- Fully Renovated
- Large Open Plan Living Area
- Separate Breakfast Room



Elm Road, KT2

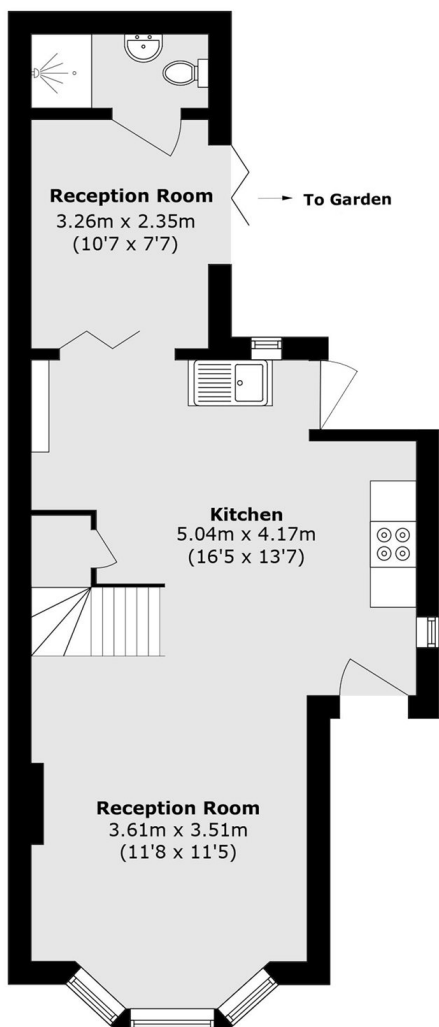
The ground floor offers a wonderfully bright and spacious open plan living area, seamlessly incorporating a sleek, modern kitchen and dining space. The kitchen is beautifully appointed with premium integrated appliances and the open plan layout is ideally suited to modern living. Bi-folding doors from the kitchen lead to an additional reception room, which would make an excellent family room or home office and is currently utilised as a third bedroom. Completing the ground floor is a modern shower room positioned to the rear.

The first floor comprises two well proportioned double bedrooms, each benefiting from its own private en suite bathroom, one featuring a full bath and the other a convenient shower. From the landing, a staircase provides access to the loft space, offering ample and easily accessible storage.

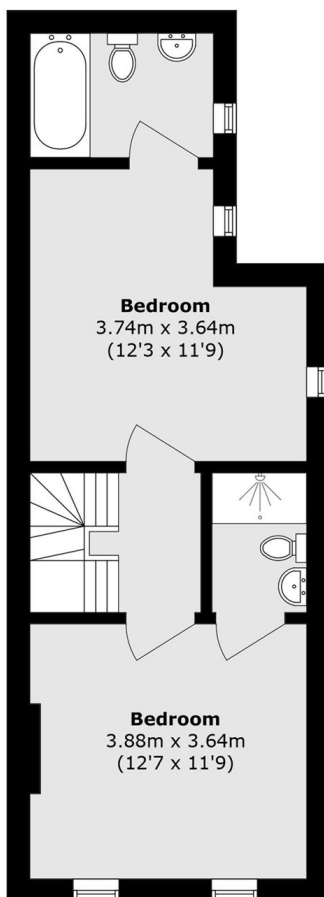
Externally, the property features a neat private garden to the front, while to the rear there is a small, private courtyard garden.



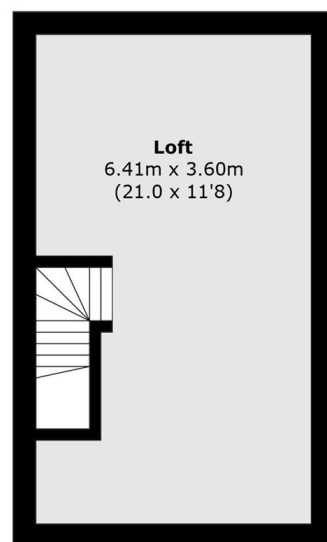
Elm Road, Kingston Upon Thames, KT2



Ground Floor



First Floor



Second Floor

Total area (approx.): 105.0 sq. m (1130.2 sq. ft)