



Connells

Birdbrook Road
Swindon



Property Description

NO ONWARD CHAIN! Situated in the highly desirable area of Upper Stratton, this three-bedroom link-detached property features a spacious layout, including a bright conservatory, a practical utility area, and a garage, providing excellent storage and versatility. The driveway offers convenient off-road parking.

Inside, the home benefits from two generous double bedrooms, alongside a third bedroom ideal for a child's room, office, or guest space. While the property would benefit from some modernisation, it provides a superb blank canvas for personalisation.

Positioned in a sought-after residential location, the home enjoys close proximity to local amenities, schools, and excellent transport links, including easy access to the A 419, making commuting simple and efficient.

Ground Floor Accommodation

Entrance Hall

Double Glazed Window. Radiator.

Lounge

12' 8" x 12' 8" (3.86m x 3.86m)
Bay Window. Fire Place. Radiator.

Kitchen/Diner

18' 11" x 11' 9" (5.77m x 3.58m)
Fitted Oven, Extractor, Dish-Washer. Double Basin Sink. Mixer Tap. Single door to Garden. Door to Conservatory.

Utility Room

8' 3" x 7' 3" (2.51m x 2.21m)
Plumbing for Washing Machine.

Conservatory

9' 4" x 8' 3" (2.84m x 2.51m)
Double Door to Garden.

First Floor Accommodation

First Floor Landing

Loft Hatch.

Bedroom One

12' 5" narrowing to 7' 9" x 11' (3.78m narrowing to 2.36m x 3.35m)
Three Double Wardrobes. Bay Window. Radiator Under Window.

En-Suite

Walk in Shower.

Bedroom Two

14' 9" narrowing to 12' 9" x 8' 7" (4.50m narrowing to 3.89m x 2.62m)
Window to Rear. Radiator.

Bedroom Three

9' 2" x 8' 3" (2.79m x 2.51m)
Window to Front. Radiator.

Bathroom

Bath with Shower Over. Window to Rear.
Heated Towel Rail.

External Features

Front Garden

Side Access. Grass and Gravel.

Rear Garden

Large rear Garden. Fenced Boundaries. Laid
to Lawn and Paving.

Parking

Driveway Parking

Garage

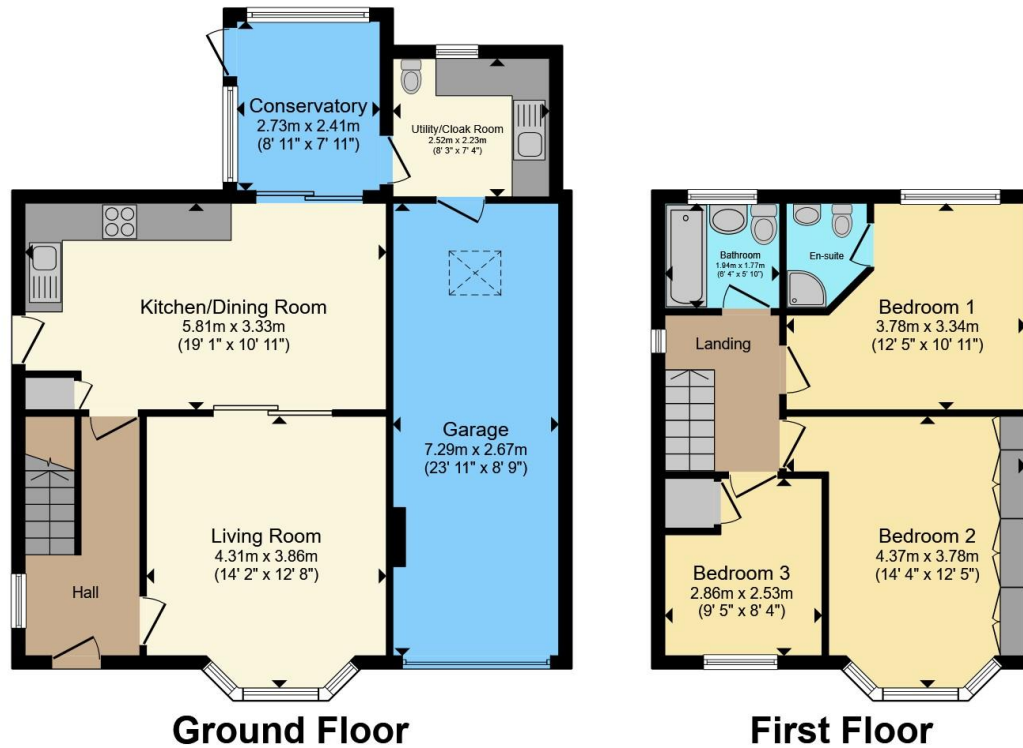
23' 10" x 8' 10" (7.26m x 2.69m)

Double Glazed Skylight. Power and Lighting.









Total floor area 119.9 m² (1,291 sq.ft.) approx

This floor plan is for illustrative purposes only. It is not drawn to scale. Any measurements, floor areas (including any total floor area), openings and orientation are approximate. No details are guaranteed, they cannot be relied upon for any purpose and they do not form part of any agreement. No liability is taken for any error, omission or misstatement. A party must rely upon its own inspection(s). Powered by www.propertybox.io



To view this property please contact Connells on

T 01793 708050
E swindonnorth@connells.co.uk

Unit B11 North Swindon District Centre Thamesdown Drive
 SWINDON SN25 4AN

EPC Rating: D Council Tax Band: E

Tenure: Freehold

view this property online connells.co.uk/Property/SDN314719



1. MONEY LAUNDERING REGULATIONS Intending purchasers will be asked to produce identification documentation at a later stage and we would ask for your co-operation in order that there will be no delay in agreeing the sale. 2. These particulars do not constitute part or all of an offer or contract. 3. The measurements indicated are supplied for guidance only and as such must be considered incorrect. Potential buyers are advised to recheck measurements before committing to any expense. 4. We have not tested any apparatus, equipment, fixtures, fittings or services and it is in the buyers interest to check the working condition of any appliances.

Connells Residential is registered in England and Wales under company number 1489613, Registered Office is Cumbria House, 16-20 Hockliffe Street, Leighton Buzzard, Bedfordshire, LU7 1GN. VAT Registration Number is 500 2481 05.

See all our properties at www.connells.co.uk | www.rightmove.co.uk | www.zoopla.co.uk

Property Ref: SDN314719 - 0004