



Collingham Gardens
Earls Court, SW5

CHESTERTONS





(SHORT LET) Beautifully proportioned, the property features impressive ceiling heights and contemporary interiors. Residents also benefit from access to the highly sought-after and beautifully maintained communal gardens.

- Interior designed one bedroom apartment.
- Direct access to beautiful residents garden.
- Wood floors, high ceilings, furnished.
- Close to both South Kensington & Earls Court tube station.

£3,500 pcm

Additional tenant charges apply (fees apply to non-AST tenancies only)

Tenancy Agreement Fee: £300

References per Tenant/Guarantor: £60

Inventory check (approx. £100 – £250 inc. VAT)

[chestertons.co.uk/property-to-rent/applicable-fees](https://www.chestertons.co.uk/property-to-rent/applicable-fees)

Energy Efficiency Rating		Current	Potential
95-100	A		
81-94	B		
69-80	C		
55-68	D		
39-54	E		
21-38	F		
1-20	G		
Not energy efficient - higher running costs			
England, Scotland & Wales		EU Directive 2002/91/EC	

Minimum Term: 1 months
Deposit Required: £4,038.46
Local Authority: Royal Borough of Kensington and Chelsea
Council Tax Band: E
EPC Rating: D
Furnished

Chestertons South Kensington Lettings

44-48 Old Brompton Road
 South Kensington
 London
 SW7 3DY

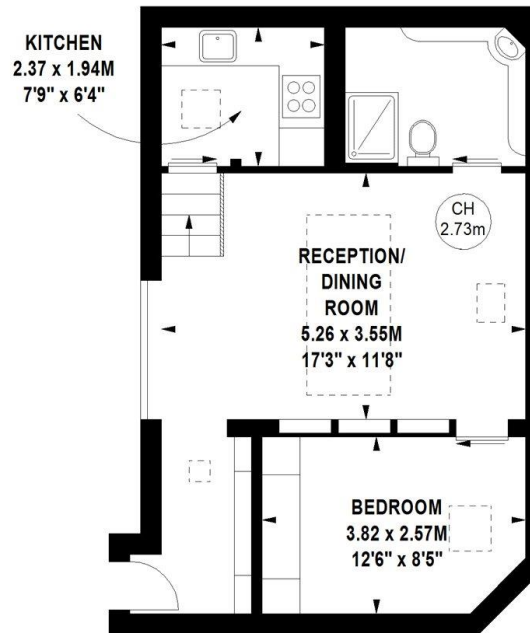
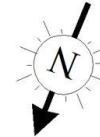
southkensingtonlettingsusers@chestertons.co.uk
 02075891244

Collingham Gardens, SW5

Approximate gross internal area

47.85 sq m / 515 sq ft

Key :
CH - Ceiling Height



Lower Ground Floor

Illustration For Identification Purposes Only. Not To Scale

*Floorplan Drawn According To RICS Guidelines

Copyright of FeaturePRO

Chesterton UK Services Limited trading as Chestertons for themselves and for the vendor of this property whose agents they are, give notice that (i) these particulars do not constitute any part of an offer or contract, (ii) all statements contained within these particulars are made without responsibility on the part of Chestertons or the vendor, (iii) whilst made in good faith, none of the statements contained within these particulars are to be relied upon as a statement or representation of fact, (iv) any intending purchasers must satisfy themselves by inspection or otherwise as to the correctness of each of the statements contained within these particulars, (v) the vendor does not make or give either Chestertons or any person in their employment any authority to make or give representation or warranty whatsoever in relation to this property. Wide angle lenses may be used. ©Copyright Chestertons | Chesterton Global Ltd | Registered Office 40 Connaught Street, Hyde Park, London W2 2AB Registered Company Number 05334580.



This paper is
100% recyclable