



Springbank Road, SE13
£900,000

Dexters



Springbank Road, SE13

This attractive double-fronted period home offers 1,759 sq. Ft of well-proportioned accommodation and exciting potential to extend (STPP), with no upward chain. The property combines original character features with generous living space and a large front driveway.

The ground floor features two bright reception rooms with original Victorian fireplaces, a spacious kitchen with ample storage, a downstairs WC, utility area, and access to a cellar. Upstairs are four bedrooms three doubles and a single ideal as a study or nursery along with a family bathroom.

Further benefits include a restored roof with original Welsh slate and a large, insulated, fully boarded loft with Velux windows, offering additional potential (subject to planning). The rear garden includes a shed and a versatile summer house, ideal for a home office or studio.

Famous for its outstanding primary schools and excellent transport links. Served by three main train lines, the area is popular with commuters as journeys to Central London take as little as 10 minutes. Access to Canary Wharf/Bank (via the DLR) is available via Lewisham Station, which can be reached by train in 4 minutes. The property is a stone's throw away from two superb green areas - Manor House Gardens and Mountsfield Park.

Features

- Double Fronted Home
- Potential to Extend (STPP)
- Four Bedrooms
- No Upward Chain
- Off Road Parking
- Enclosed Rear Garden



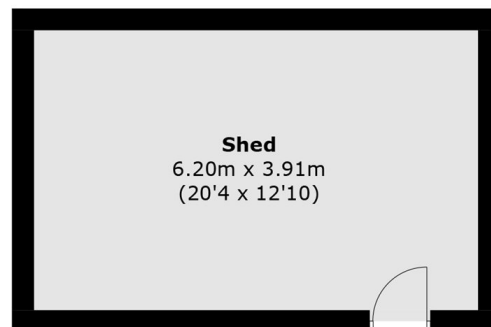




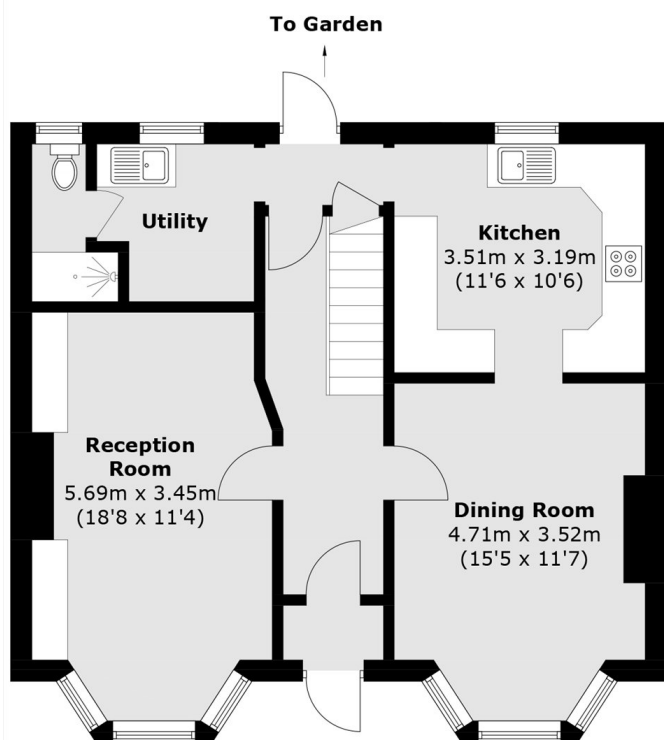
Springbank Road, London, SE13



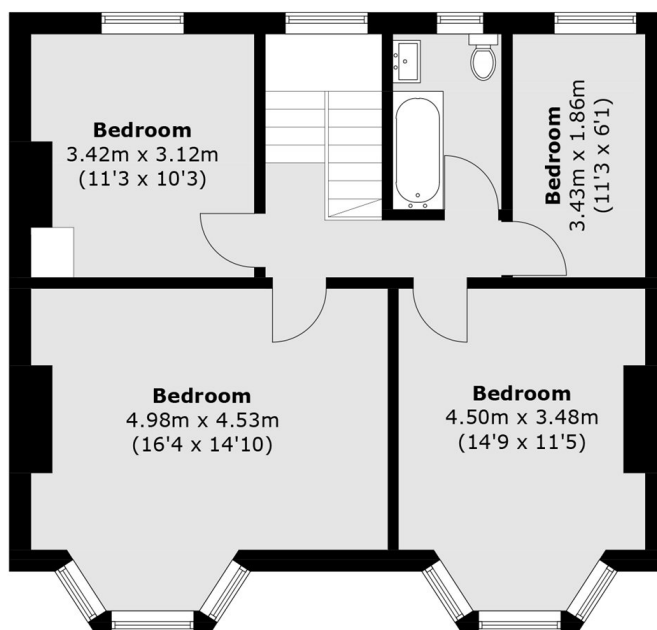
(Not Shown In Actual
Location / Orientation)



(Not Shown In Actual
Location / Orientation)



Ground Floor



First Floor

Total area (approx.): 129.8 sq. m (1,397.2 sq. ft)
Shed: 30.7 sq. m (330.4 sq. ft)