



THOMAS
MERRIFIELD
SALES LETTINGS

103 Cardigan Street,
Jericho, Oxford, OX2 6BW

103 Cardigan Street, Jericho, Oxford, OX2 6BW

An attractive mid-terrace house situated in the popular heart of Jericho. Currently let as a house of multiple occupancy.

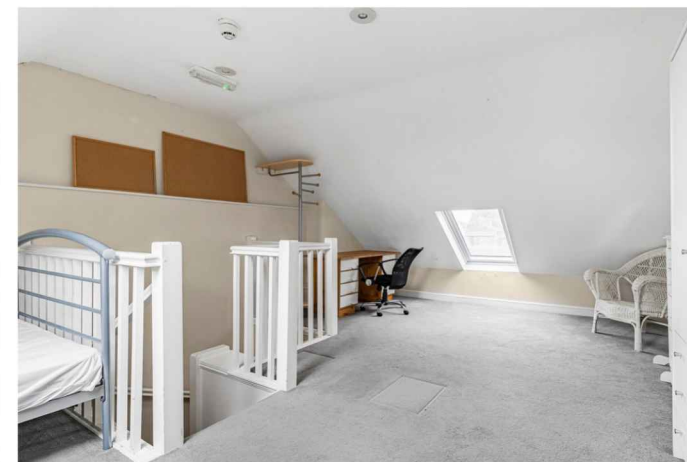
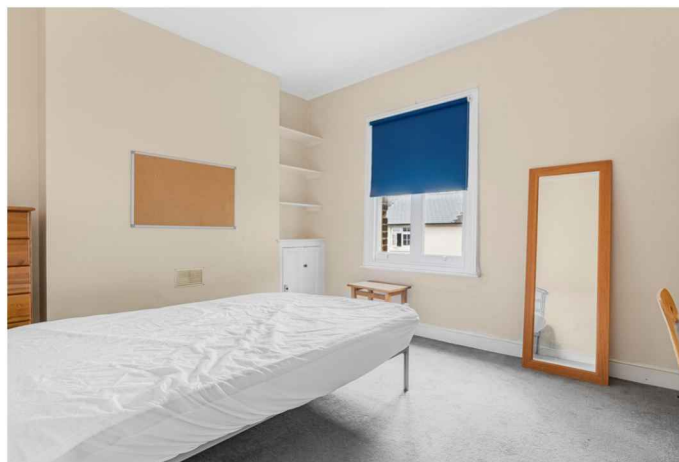
- Accommodation arranged over five floors
- Basement with sitting room
- Ground floor with bedroom and kitchen/dining room
- First floor two bedrooms and a bathroom
- Second floor two bedrooms and a bathroom
- Third floor bedroom
- Courtyard area
- Within walking distance of all amenities in Jericho
- Council Tax Band: F
- EPC Rating: D

The accommodation is arranged over five floors, on the ground floor is a bedroom and kitchen/dining room, cloak room and access to the courtyard via the kitchen. There is a basement sitting room for communal use. On the first floor, two bedrooms and a bathroom and on the third floor a further bedroom.

According to Ofcom, Superfast and Ultrafast broadband is available and you are likely to have good mobile voice and data coverage outdoors and indoors with certain networks.

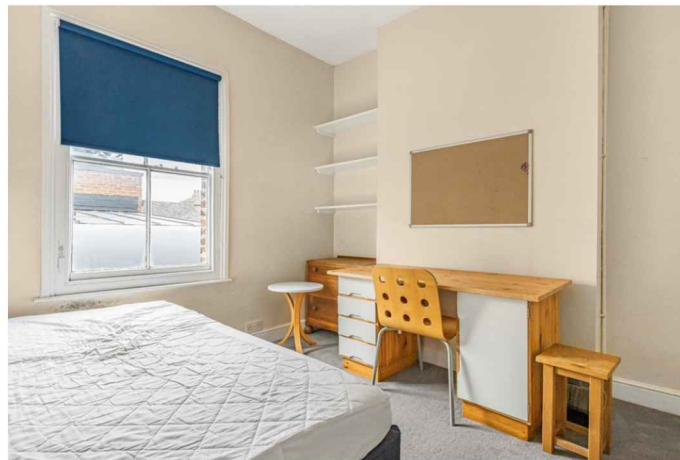
Currently achieving £4500 pcm in rent

Guide Price £725,000 Freehold





Situated within walking distance of Port Meadow and easy access to the day to day shopping facilities of vibrant Walton Street with its fashionable restaurants pubs bars and cinema. Slightly further afield are the more extensive range of shopping leisure and recreational facilities at Oxford City centre and Summertown. Jericho enjoys easy access to University Departments colleges and a range of renowned state and private schools for all ages. There are rail services to London Paddington in approximately one hour from Oxford mainline station and London Marylebone from Oxford Parkway. There is also a coach station at Gloucester Green where there are frequent buses to London Victoria Heathrow Gatwick and Stansted airports.



Approximate Gross Internal Area 1674 sq ft – 155 sq m

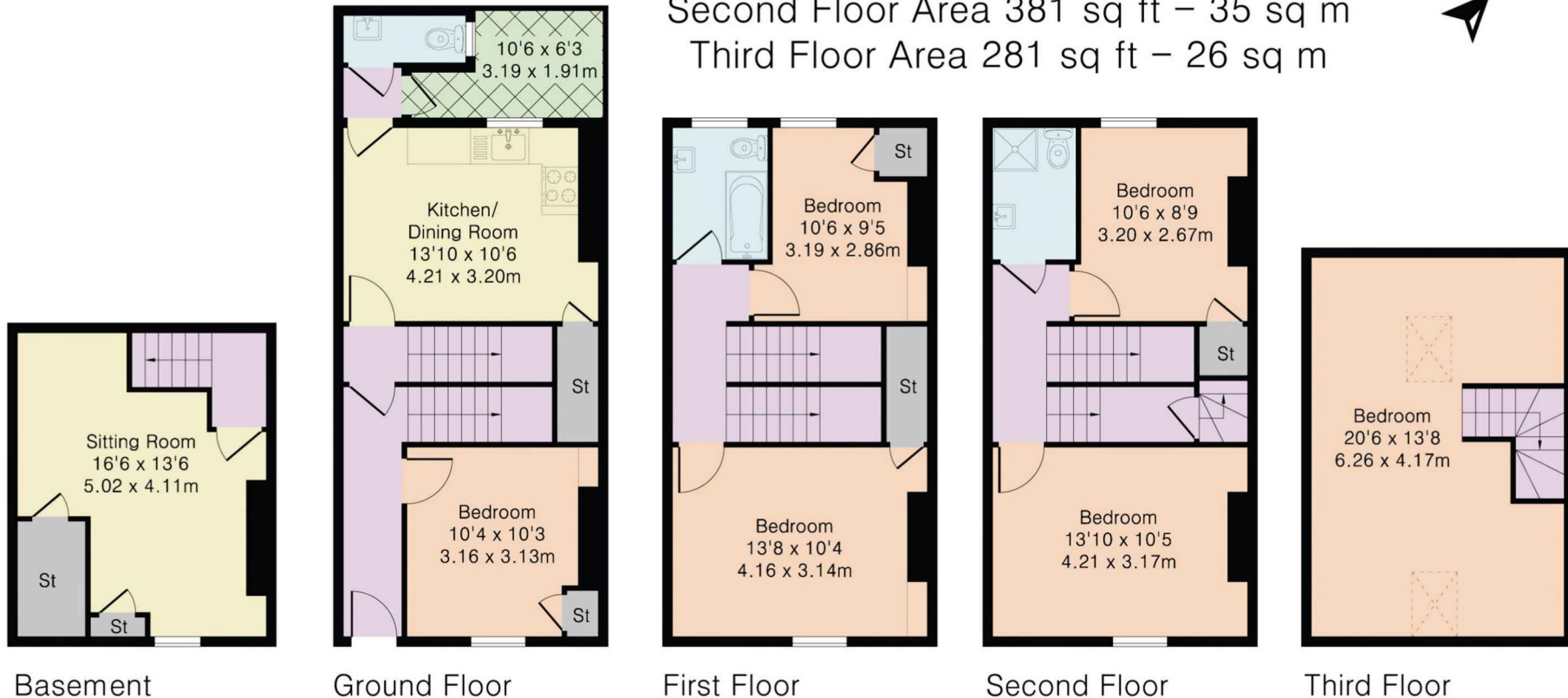
Basement Area 222 sq ft – 21 sq m

Ground Floor Area 409 sq ft – 38 sq m

First Floor Area 381 sq ft – 35 sq m

Second Floor Area 381 sq ft – 35 sq m

Third Floor Area 281 sq ft – 26 sq m



SALES LETTINGS

HOLYFIELD HOUSE, 1 WALTON WELL ROAD,
OXFORD, OX2 6ED

t. 01865 515000

e. oxford@thomasmerrifield.co.uk

w. thomasmerrifield.co.uk

IMPORTANT NOTICE Thomas Merrifield, their clients and any joint agents give notice that:

1. They are not authorised to make or give any representations or warranties in relation to the property either here or elsewhere, either on their own behalf or on behalf of their client or otherwise. They assume no responsibility for any statement that may be made in these particulars. These particulars do not form part of any offer or contract and must not be relied upon as statements or representations of fact.

2. Any areas, measurements or distances are approximate. The text, photographs and plans are for guidance only and are not necessarily comprehensive. It should not be assumed that the property has all necessary planning, building regulation or other consents and Thomas Merrifield have not tested any services, equipment or facilities. Purchasers must satisfy themselves by inspection or otherwise.