



Guildford Mews

Leighton Buzzard, Bedfordshire, LU7 1FL

£1,500 PCM



Guildford Mews

Leighton Buzzard, Bedfordshire, LU7
1FL

Watsons are delighted to offer for let this well presented three bedroom town house centrally located within a short walk of the Town Centre. The accommodation comprises: Entrance hallway, lounge, kitchen with appliances, downstairs WC/cloakroom, stairs to first floor, bedroom one, family bathroom, bedroom three, stairs to top floor, main bedroom, En-suite shower room, rear garden, allocated parking space. Benefits include gas central heating and double glazing. The property is offered unfurnished and is available at the beginning of September.
*** FILE PHOTOGRAPHS USED FOR MARKETING ***

Entrance Hallway:

Cloakroom/ WC:

Kitchen:

9'7 x 6'8 (2.92m x 2.03m)

Lounge:

13'9 x 13'2 (4.19m x 4.01m)

Stairs to First Floor:

Bedroom:

13'2 x 9'9 (4.01m x 2.97m)

Bedroom:

10'5 x 6'8 (3.18m x 2.03m)

Bathroom:

Stairs to Top Floor:

Bedroom:

13'2 x 11'8 (4.01m x 3.56m)

Ensuite:

Rear Garden:

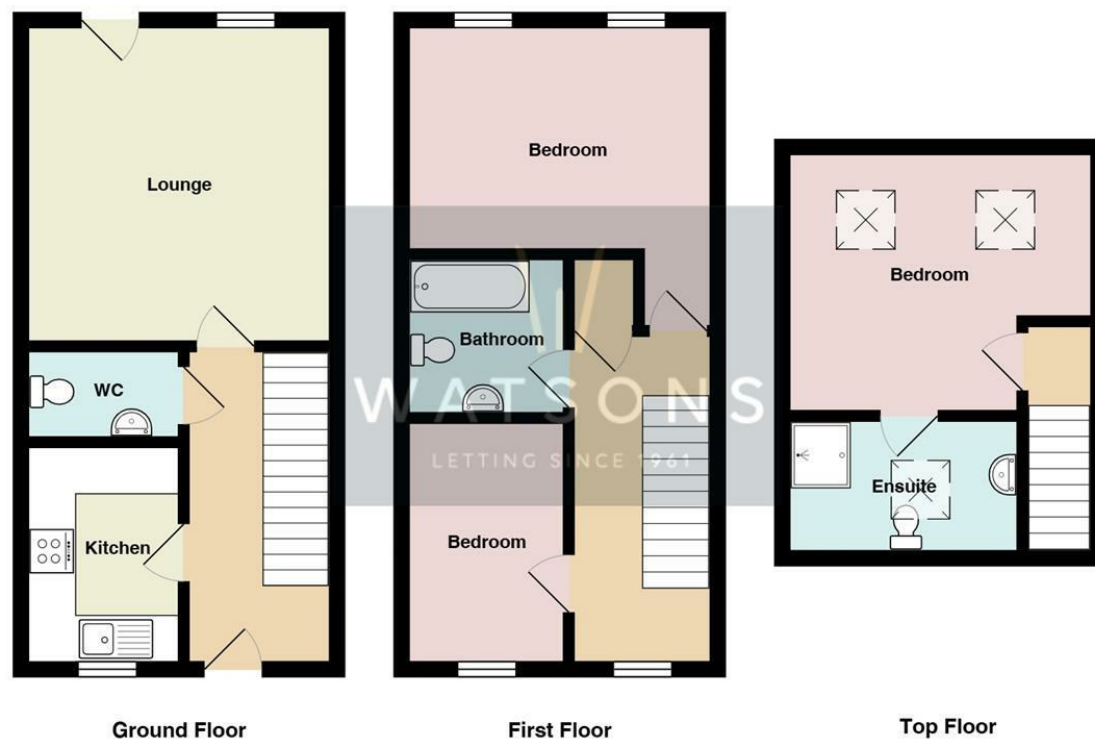
Allocated Parking Space:





Measurements and floor plans are approximate and for guidance only. Any prospective Tenant should check all measurements. Floor plan coverings and fitments are for example only and may not represent the true finish of the property.

Floor Plan



Total Area: 88.3 m² ... 950 ft²

All measurements are approximate and for display purposes only

Viewing

Please contact our Watsons Lettings Office on 01525 378309 if you wish to arrange a viewing appointment for this property or require further information.

17 - 21 Ropa Court, Leighton Buzzard, Bedfordshire, LU7 1DU
Tel: 01525 378309 Email: info@watsonslb.co.uk www.watsonslb.co.uk