



3 Barton Green Trull, Taunton TA3 7NA



Constructed in the mid 1990's by reputable local builders West of England Developments is this well presented 5 bedroomed detached family house with accommodation extending to 2,257 sq ft and situated in a quiet cul-de-sac within this highly sought after village, just 1.8 miles of the centre of town with good sized garden to rear, double garage and ample driveway parking. No onward chain.





Features

- Entrance Hall
- Living Room
- Dining Room
- Conservatory with French doors to garden
- Fitted Kitchen / Breakfast Room with granite work surfaces, integrated appliances, Miele wine fridge and door to garden
- Utility Room with door to Double Garage
- Cloakroom
- Master Bedroom with fitted wardrobes and Ensuite Bathroom with separate shower
- Bedroom 2 with Ensuite Shower Room
- 3 further Bedrooms with fitted wardrobes
- Family Bathroom with separate shower
- Good sized enclosed garden to rear with useful shed
- Double Garage and driveway parking
- Gas central heating
- Double glazing
- The Castle School catchment
- Queens College within 5 minutes walking distance
- Council tax band G
- What3words:
///depth.swipes.unable







Barton Green is situated in the village of Trull, within 1.8 miles of the centre of Taunton, the County Town of Somerset.

Trull provides excellent amenities including parish church, thriving shop, post office, garage, public house, tennis club, primary school and a regular shuttle bus service to Taunton town centre.

Taunton is a bustling, forward-looking town with excellent amenities, a good selection of independent and high street shops, distinctive restaurants, cafés, a wealth of history and sporting facilities including the County Cricket Ground.

Taunton also benefits from a main line railway station linking to London Paddington in less than 2 hours and excellent communications for the M5 motorway at junction 25, situated on the eastern side of the town.

Taunton offers a good selection of both state and independent schools including Castle School, Taunton School, King's, Richard Huish Sixth Form College and nearby Queen's College a 5 minute walk away.



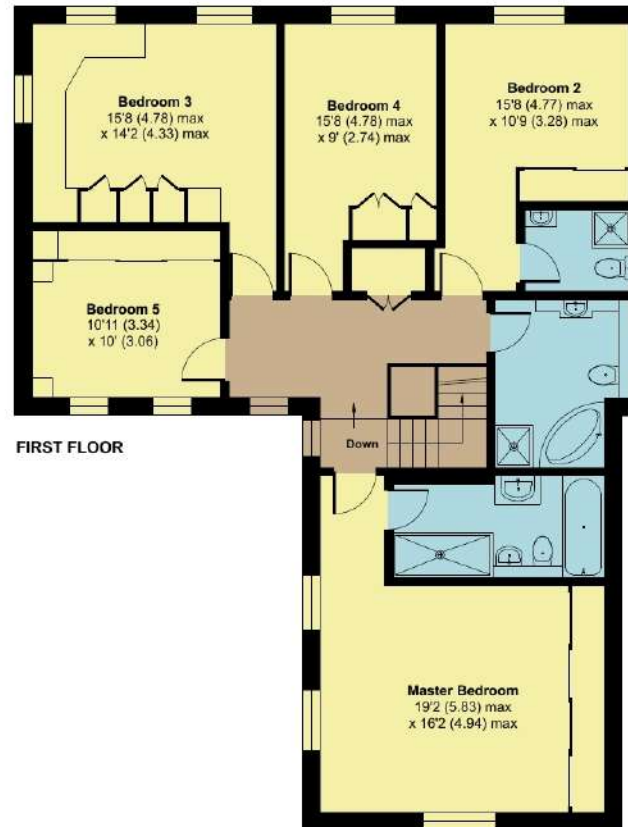
3 Barton Green, Trull, Taunton, TA3 7NA

Approximate Area = 2257 sq ft / 209.6 sq m

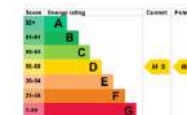
Garage = 313 sq ft / 29 sq m

Total = 2570 sq ft / 238.6 sq m

For identification only - Not to scale



Floor plan produced in accordance with RICS Property Measurement 2nd Edition, Incorporating International Property Measurement Standards (IPMS2 Residential). © nichecom 2026. Produced for Robert Cooney. REF: 1405194.



For clarification, we wish to inform prospective purchasers that: these particulars are set out as a general outline only for the guidance of intended purchasers, and do not constitute, nor constitute part of, an offer or contract; all descriptions, dimensions, references to condition and necessary permission for use and occupation, and other details, are given without responsibility and any intending purchasers should not rely on them as statements or representation of fact, but must satisfy themselves by inspection or otherwise as to the correctness of each of them; no person in the employment of Robert Cooney has any authority to make or give any representation or warranty whatever in relation to this property; we have not carried out a detailed survey nor tested the services, appliances and specific fittings.

**robert
cooney**

Viewing strictly through the selling agents:

Robert Cooney

Corporation Street, Taunton,
Somerset TA1 4AW

Telephone 01823 230 230

E-mail taunton@robertcooney.co.uk

Website robertcooney.co.uk

