

St. John Street, EC1V

£500,000

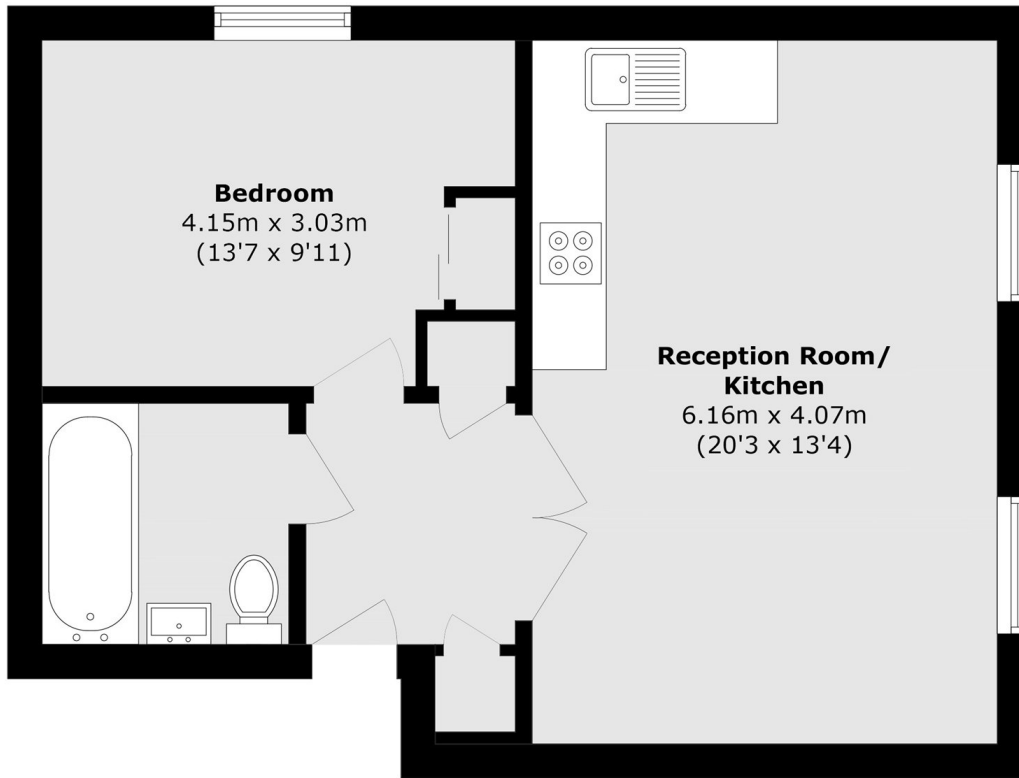
A well-proportioned one-bedroom flat located on the second floor of a period conversion. This property benefits from an open-plan kitchen/living area, large sash windows, and lift access.

The property is ideally located within easy walking distance of Farringdon, Barbican, Old Street, and Angel stations, providing excellent transport links via the Elizabeth, Circle, Hammersmith & City, Metropolitan, Northern and National Rail services. The area is renowned for its array of independent cafés, restaurants, bars and boutiques, with Exmouth Market, Smithfield Market, and the City all close by.

Features

- One Bedroom
- Open-Plan
- Lift Access
- Concierge
- Period Conversion
- Chain Free

St. John Street, London, EC1V



Second Floor

Total area (approx.): 48.5 sq. m (522.0 sq. ft)