



GLOUCESTER WALK, W8

£850,000

Two Bedroom
Private Patio
Two Bathroom
Lower Ground Floor
Excellent Kensington Location
Leasehold

@marshandparsons
marshandparsons.co.uk

MARSH &
PARSONS



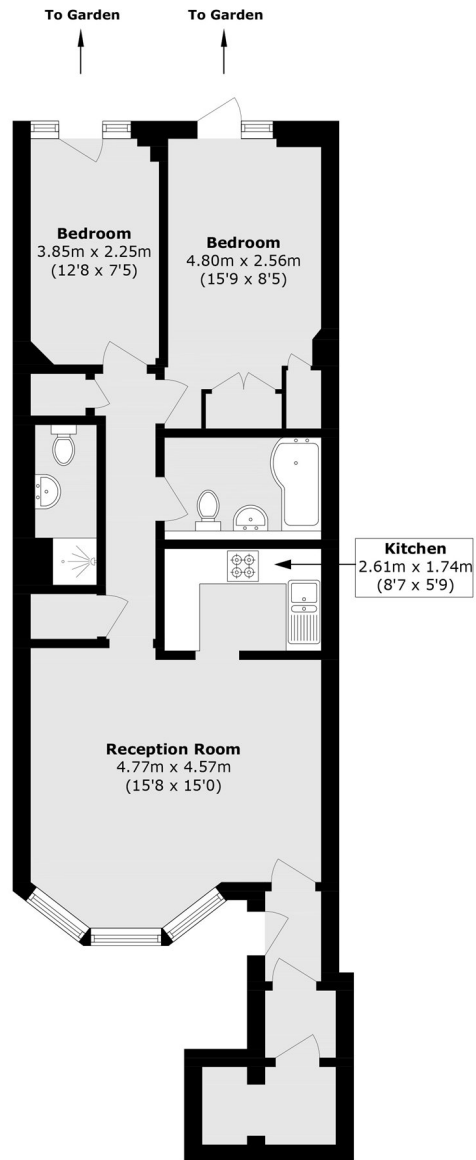
ABOUT THE PROPERTY

A beautifully proportioned two-bedroom, two-bathroom garden apartment, ideally positioned in a prime Kensington location.

Gloucester Walk is situated just off Kensington Church Street. The area is well-served by excellent restaurants and shops. Transport to the City and West End is from either High Street Kensington or Notting Hill.



STEP INSIDE GLOUCESTER WALK



Total area (approx.): 70.7 sq. m (761.0 sq. ft)

Kensington
020 7368 4450

Energy Rating: We aim to make our particulars both accurate and reliable. However, they are not guaranteed; nor do they form part of an offer or contract. If you require clarification on any points then please contact us, especially if you're traveling some distance to view. Please note that appliances and heating systems have not been tested and therefore no warranties can be given as to their good working order

**MARSH &
PARSONS**