

# clever



## 29 Chaddlewood Avenue

, Plymouth, PL4 8RF

**Asking price £350,000**



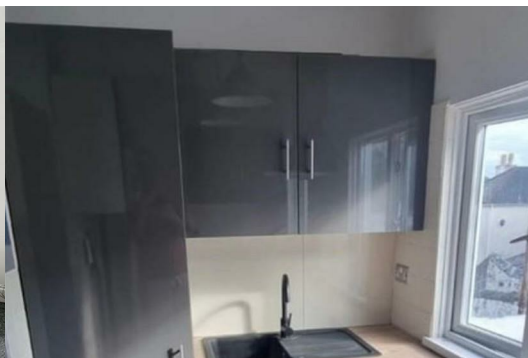
Fully let 2025/26 - Producing Gross Income \*\*\*£35,750\*\*\*

Welcome to Chaddlewood Avenue, Plymouth - This period mid-terrace house boasts not only a sought-after central location but also exceptional HMO property. The property has enjoyed continual rental income for approx 20 years producing excellent returns.

With six generously sized bedrooms and two bathrooms, this property offers ample space for comfortable living or lucrative letting opportunities. The modern kitchen and bathrooms add a touch of contemporary style to this characterful home, making it a desirable choice for those seeking a blend of tradition and modernity.

Currently producing an impressive income of approximately £35,500, this property is not only a place to call home but also a smart investment opportunity. Whether you're looking to expand your property portfolio or simply searching for lucrative first buy to let this property on Chaddlewood Avenue has the potential to meet your needs.

Don't miss out on the chance to own a piece of this vibrant neighbourhood - schedule a viewing today and discover the endless possibilities that this property has to offer. EPC D.



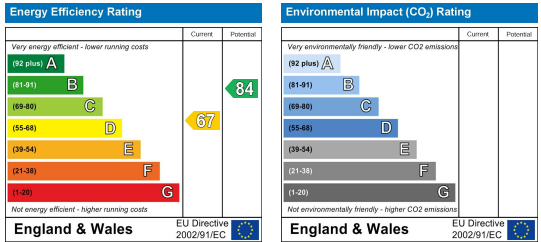
# Area Map



# Floor Plans



# Energy Efficiency Graph



These particulars, whilst believed to be accurate are set out as a general outline only for guidance and do not constitute any part of an offer or contract. Intending purchasers should not rely on them as statements of representation of fact, but must satisfy themselves by inspection or otherwise as to their accuracy. No person in this firm's employment has the authority to make or give any representation or warranty in respect of the property.